



OKLAHOMA CITY
COMMUNITY FOUNDATION

Community Foundation
SCHOLARS

*Finding
Your Future*

2018 Scholars Yearbook

How to Claim Your Scholarship

You've worked hard to earn this scholarship, and you're well on your way to a great and successful future. Your award packet includes the final steps to your scholarship journey! Make sure your scholarship money is sent to your school by CLAIMING your scholarship. Here's how:

★ Inside Your Scholarship Award Packet ★

1

Award Letter:

Learn about the history of your scholarship and the donor who made it happen.

How it Works Sheet:

WE NEED your college email address and student ID number as soon as possible. Send them to w.minter@occf.org.

2

3

Verification of Enrollment:

You'll need to have this form completed by your school's registrar EACH SEMESTER in order to receive your money. No excuses!

Mail your forms to:
Scholarship Committee
P.O. Box 1146 Oklahoma City, OK 73101

Thank You:

Finally, don't forget to mail a THANK YOU note to us to share with the donor who is helping support your education!

4

Visit occf.org/claim for a step-by-step video on claiming your award.

Questions?

Please contact any of our scholarship staff below:



Wanda Minter
w.minter@occf.org
405/606-2907

Rick Fernandez
r.fernandez@occf.org
405/606-2919

Megan Hornbeek Allen
m.hornbeek@occf.org
405/606-2917

Dear 2018 Scholars,

Wow. It's been a long four years hasn't it? We couldn't let this day pass without taking the time to congratulate you on your accomplishments, including your receipt of a scholarship from the Oklahoma City Community Foundation! We have chosen you for this award because we believe in your potential, and we know you are on your way toward a bright and successful future.

The scholarship you are receiving is part of our Trustee Scholarship Initiative that was established in 1998 to encourage more students in central Oklahoma to go to college. The generous gifts of donors who were once students just like you made these awards possible. These donors recognize the various educational challenges students may encounter and want to help you achieve your goals. As you embark on your college journey, we hope you will remember these donors are your biggest fans and are cheering you on and wishing for your success!

We also want you to know that your scholarship opportunities don't end here! You can apply for additional Oklahoma City Community Foundation scholarship opportunities throughout college. Learn more on page 2.

We hope you'll keep this scholarship yearbook as a reminder of the long hours of hard work you put in to get this far. We wish you the best of luck and hope you will stay in touch as your educational dreams come true. And most importantly, don't forget to go to class!



Bond Payne
Chairman, Board of Trustees



Nancy B. Anthony
President

What is the Trustee Scholarship Initiative?

Established in 1998 by the Oklahoma City Community Foundation Trustees, the Trustee Scholarship Initiative is a series of award programs, including the Community Foundation Scholars program, designed to encourage more students in central Oklahoma to attend college.

Community Foundation Scholars Program

The Community Foundation Scholars program rewards students from 54 central Oklahoma high schools who are good students, active in their community and who might not otherwise qualify for awards based solely on academic standards, as well as students who will be the first in their family to attend college. We're recognizing you for one of two scholarships offered for first-year college students below:

College Freshmen

Community Foundation Scholars

Awarded to good students who are active in their community and might not otherwise qualify for awards based solely on academic standards. For the 2018-19 academic year, 94 Community Foundation Scholars will each receive a \$2,000 award.

New Opportunities Scholars

Awarded to students who will be the first in their family to attend college. Students apply as high school juniors and participate in a program to prepare them for college. For the 2018-19 academic year, 111 New Opportunities Scholars will each receive a \$2,000 award.

College Sophomores, Juniors & Seniors

Your scholarship opportunities don't end here! Each spring, former Community Foundation Scholars who are attending a college, university or vocational school in Oklahoma, in good academic standing and have financial need are invited to apply for the Irene P. and Samuel F. Frierson Education Trust Scholarship during their second, third and fourth year following high school graduation.

Frierson Scholarship

Application Deadline: June 1

Award Amount: Varies

Steps to apply:

1. Receive email invitation from OCCF to apply for Frierson Educational Trust Scholarship.
2. Log on to occf.academicworks.org, update your online application and complete the reflection statement.
3. Complete the Community Foundation survey form.
4. Submit an official transcript including your collegiate spring semester grades.
5. Upload a copy of your Student Aid Report from FAFSA.

Questions? Contact Rick Fernandez at r.fernandez@occf.org or 405/606-2919.

Other Trustee Scholarship Initiative programs include:

Oklahoma Youth With Promise

Awarded to students who graduate high school while in Oklahoma's foster care system.

Nurse Education Program

Awarded to third and fourth year college nursing students and registered nurses who are pursuing a nursing-related bachelor's degree.

We also offer scholarships for:

Students enrolled in the following colleges or career techs:

Francis Tuttle Technology Center (Oklahoma City)
Great Plains Technology Center (Lawton Campus)
Langston University
Metro Technology Center (Oklahoma City)
Oklahoma City University
Oklahoma Panhandle State University
Oklahoma State University
Oklahoma State University Institute of Technology (Okmulgee)
Oklahoma State University-Oklahoma City
University of Central Oklahoma
University of Oklahoma
University of Oklahoma Health Sciences Center

Students pursuing the following degree programs:

Architecture, landscape architecture or interior design
Arts
Business, finance, accounting, management
or economics
Early childhood education
Education
English
Heating, ventilation, air conditioning and
refrigeration (HVACR) engineering fields
Law
Mental health services
Music
Nursing
Physician Assistants programs
Sales and marketing



It was important for me to reapply for the Frierson Scholarship opportunity every year because I do not receive any financial support from my family. With the help of the Frierson scholarship, I'm happy to say I will now be graduating from the University of Oklahoma in May 2018 with my bachelor of science degree."

Paul Delgado, Community Foundation Scholar and three-year Frierson Scholarship recipient

Visit occf.academicworks.com and search by keyword to learn more!

Guiding You Toward Success

Did you know, your high school guidance counselor is a key reason you are receiving a Community Foundation Scholars award? By participating in our Central Oklahoma Guidance Counselor Network, your counselor has ensured these scholarships will continue to be awarded to students from your high school. If you haven't thanked your counselor, we encourage you to take a moment and show them your appreciation!

Central Oklahoma Guidance Counselor Network

Guidance counselors from 54 central Oklahoma high schools participate in our Central Oklahoma Guidance Counselor Network to learn more about helping students prepare for college. Through the network, we provide free training and resources including continuing education workshops and campus visits for counselors to learn about college admissions and financial aid opportunities. In addition, we provide at least one Community Foundation Scholars award to each participating high school.

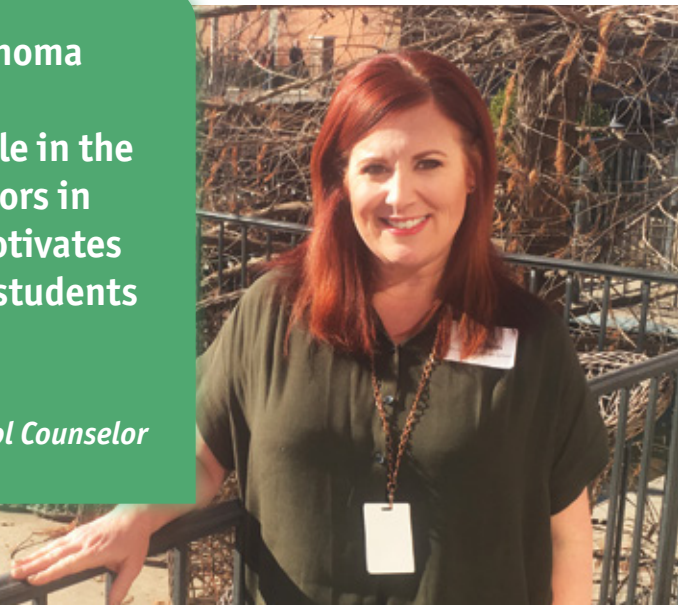
2018 Central Oklahoma Guidance Counselor Network

ASTEC Charter School – *Nayedhli Gutierrez*
Bethany High School – *Jackie Melton*
Capitol Hill High School – *Kristen Compton*
Carl Albert High School – *Lora Souza*
Casady School – *Amanda Kisselle*
Choctaw High School – *Cormie're Bishop*
Christian Heritage Academy – *Troop Bullard*
Classen School of Advanced Studies – *Terri Schuelein*
Community Christian School – *Diana Stephens*
Crooked Oak High School – *Angelia Wilson*
Crossings Christian School – *Keri Shields*
Deer Creek High School – *Cindy McCachern*
Del City High School – *Polly Choate*
Douglass High School – *Tina Williams*
Dove Science Academy OKC – *Abdullah Ceylan*
Edmond Memorial High School – *Stacey Tate*
Edmond North High School – *Amy Hanson*
Edmond Santa Fe High School – *Deanna Fleck*
El Reno High School – *Sheila Seewald*
Emerson High School – *Jane Taylor*
Guthrie High School – *Annie Chadd*
Harding Charter Preparatory School – *Katherine Ferguson*
Harding Fine Arts Academy – *Celestia Stacy*
Harrah High School – *Amber Parsons*
Heritage Hall – *Julie Bramble*
John Marshall High School – *Lindsey Williams*
Jones High School – *Susan Gierhart*

Luther High School – *Angie Cox*
Bishop McGuinness Catholic High School – *Rebecca Damron*
Midwest City High School – *Jamie Butler*
Millwood High School – *Carlissa Boyd-Baker*
Moore High School – *Nakia McCarrell*
Mount St. Mary Catholic High School – *Donna Williams*
Mustang High School – *Ericka VanCleave*
Norman High School – *Katherine Cortest*
Norman North High School – *Phyllis Michaud*
Northeast Academy for Health Sciences and Engineering – *Evon Finklea*
Northwest Classen High School – *Donna Hill*
Oklahoma Christian Academy – *Judi Lashley*
Oklahoma Centennial High School – *Ashley Westerman*
Oklahoma Christian School – *Sherry Sage*
Oklahoma School of Science and Mathematics – *Cynthia Parish*
Piedmont High School – *Cathy Earnest*
Putnam City High School – *Brenda Stinnett*
Putnam City North High School – *Jennifer Bryant*
Putnam City West High School – *Angie Miller*
Santa Fe South High School – *Danny Boyd*
Southeast High School – *Nayibe Hoffman*
Southmoore High School – *Risa Demeter*
Star Spencer High School – *Adrienne Gab*
U.S. Grant High School – *Robin Lindsey*
Western Heights High School – *Laura Castrop*
Westmoore High School – *Carole Carter*
Yukon High School – *Jamie Kale*

“Being a first-year participant in the Central Oklahoma Guidance Counselor Network allowed me to offer scholarships to my students that weren't available in the past. In addition, networking with other counselors in our area renews my energy for counseling and motivates me to want to continue learning all I can for the students and parents that I serve.”

Keri Shields, Crossings Christian School Counselor



Scholarly Support

Your scholarship award would not be possible without the support of many donors who are eager to help students like you achieve your higher education goals. We are pleased to acknowledge the following donors whose gifts provide substantial support for the Trustee Scholarship Initiative.

Star Supporters

Albers Family Affiliated Fund
Central High School Alumni Association
Sue and Joe Esco Fund
Irene P. and Samuel E. Frierson Educational Trust
E.K. Gaylord Fund
Mary Louise Hartpence Estate
William M. and Janet S. Johnson Scholarship Fund
Ruth Mershon Trust
McGee Foundation Fund
Winona S. Presley Fund
Records-Johnston Family Foundation
Willie Elizabeth Shipley Fund

Bob and Nancy B. Anthony
Eide Bailey, LLP
J. Edward and Gene Barth
Vinita F. Boyer
Dahl P. Brown Jr.
Susan Esco Chandler
Conoco Phillips
The Coyle and Berry Families
Dana Corporation
Everett Foundation Affiliated Fund
Millard Gardner
Dr. and Mrs. Charles Haunschild
Hugh and Lucille Hedger
Raymond H. and Bonnie B. Hefner Family Fund

Hesed Foundation
Lynn and James H. Holloman Jr.
Mr. and Mrs. Charles B. Johnson
Martha King Scholarship Fund
John E. Kirkpatrick
Kirkpatrick Family Fund
E. Phil and Roberta Kirschner Foundation
Wann and Clara Langston
Mike and Jean Lehr
Edward A. Logan
Rebecca McNeese
MidFirst Bank
Northwest Classen Class of 1956
Oklahoma Speakers Ball
Wayne and Deborah Parker
Dilip C. and Vibha Patel
Pilot Club Scholarship Fund
Lee and Miriam Powell
David and Anna-Faye Rose
Dr. Grace Ruidera
Edward Ruscha
Robert P. Schmid
Scott and Geneva Smith
Stracke Family Fund
Mr. and Mrs. Mark S. Svoboda
J. Edwin Thomas Family
Tom A. Thomas Jr.
Jerry Thomason
Thomas Utterback

Honoring Past Trustees

Community Foundation Scholars awards are made in honor of the following Oklahoma City Community Foundation past Trustees.

Jack Abernathy	John E. Green	Harry Merson
Ray T. Anthony	Kirkland Hall	Anne Morgan
J. Edward Barth	Richard Harrison	J. Larry Nichols
Mary Ann Bauman	Raymond Hefner Jr.	Ronald J. Norrick
John Belt	Dan Hogan III	Paul B. Odom Jr.
Jim Clark	James H. Holloman Jr.	F.M. Petree
Nancy Coats-Ashley	Jane Jayroe Gamble	George Records
James R. Daniel	William O. Johnstone	Clayton Rich
Steven C. Davis	John E. Kirkpatrick	J.B. Saunders Jr.
Paul W. Dudman	Linda Lambert	William F. Shdeed
Nancy Payne Ellis	Judy Love	Richard L. Sias
Jean I. Everest	Steve Mason	James R. Tolbert III
Jeanette Gamba	Dean A. McGee	Morrison G. Tucker
Sylvan Goldman	Frank McPherson	

Preserving the Past by Supporting Scholarships

By graduation, most Oklahoma high school students have learned about the land rush of 1889 and the formation of the great state we call home. As central Oklahoma lands were opened to homesteaders, the territory also organized its first public school.

Initially named Oklahoma High School, the state's first high school was organized in Oklahoma Territory in 1892. Later renamed Central High School, the historic building still stands today in downtown Oklahoma City as the home of Oklahoma City University School of Law. Central High School closed its doors in 1968, but the proud Cardinal alumni have ensured the school's memory will live on by supporting scholarships for students.

In 1996, the Central High School Alumni Association established an endowed scholarship fund at the Oklahoma City Community Foundation. Thanks to the support of alumni and friends dispersed across the United States, the fund provides six to eight high school graduates from central Oklahoma each year with a \$2,000 scholarship. Awarded through our Community Foundation Scholars program, the scholarships benefit college-bound students who are active in their community.

"Though Central is no longer operational, our alumni are proud to help students who attend high school in central Oklahoma further their education," said Oscar Jackson, Central High School alumnus and member of the alumni association's board of directors. "Our scholarship fund at the Oklahoma City Community Foundation has granted nearly \$170,000 in scholarships since its establishment and allows us to continue our legacy in perpetuity."

"Oklahoma City University was the only school in my area that offered the undergrad and grad programs I needed for my career choice," said Sierra Brown, a 2017 Community Foundation Scholar whose scholarship was supported by the Central High School Alumni Association. "Receiving this scholarship allowed me to go to my dream school and start the path that would lead to my career. I cannot thank OCCF and the Central High School Alumni Association enough!"

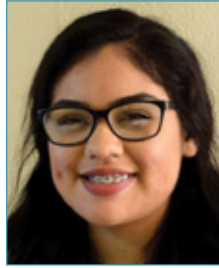


Members of the Central High School Alumni Association stand with Sierra Brown, Central High Alumni Association Community Foundation Scholar, in front of the former Central High School in downtown Oklahoma City.

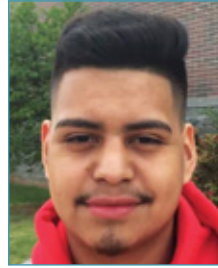
2018 Scholars



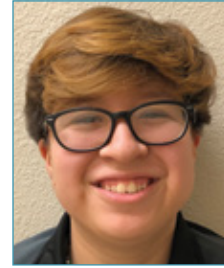
Diana Aguilar
Capitol Hill High School
Oklahoma City Community College



Hilary Aguilar
Harding Fine Arts Academy
University of Central Oklahoma



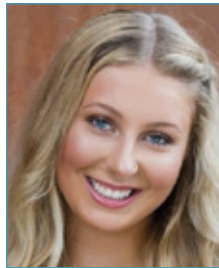
Uriel Aguilar
U.S. Grant High School
Oklahoma State University



Trinidad Alarcon Espinoza
Capitol Hill High School
University of Oklahoma
*Jack Abernathy Community Foundation
Scholar*



Daniel Alguindigue
Norman High School
University of Oklahoma



Kirsten Allbee
Edmond Santa Fe High School
Baylor University



Juana Alvarado
Capitol Hill High School
Oklahoma City Community College
*Paul B. Odom Jr. Community Foundation
Scholar*



Diego Alvarado Miranda
Del City High School
Oklahoma State University



Isabelle Alvarez
Harding Fine Arts Academy
University of Central Oklahoma
John Belt Community Foundation Scholar



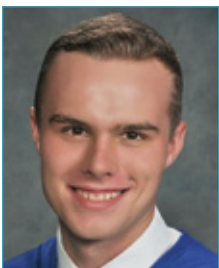
Faith Anderson
Guthrie High School
University of Oklahoma
*Jennifer Lea Briggs Community
Foundation Scholar*



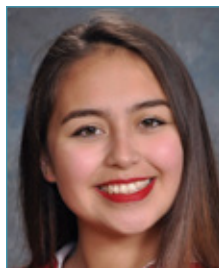
Kathryn Arreaga
Northwest Classen High School
Oklahoma City University
*Northwest Classen Class of 56 Community
Foundation Scholar*



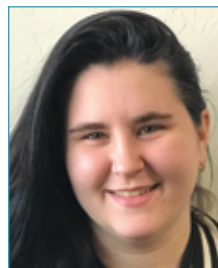
Miriam Arredondo
ASTECC Charter School
Oklahoma City Community College



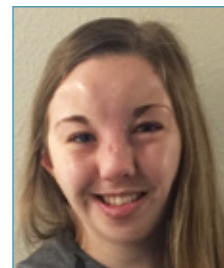
Ethan Attebery
Moore High School
Oklahoma State University



Lora Bachhofer
Del City High School
University of Central Oklahoma



Destiny Bailey
El Reno High School
Redlands Community College



Martha Barnes
Edmond North High School
University of Central Oklahoma



Jacob Bedell
El Reno High School
 Oklahoma State University



Sierra Bennett
Choctaw High School
 Oklahoma Christian University
Sylvan Goldman Community Foundation
 Scholar



David Berry
Classen School of Advanced Studies
 Oklahoma State University - Oklahoma
 City



Braxton Beuke
Oklahoma School of Science and
Mathematics
 Oklahoma State University
J. Larry Nichols Community Foundation
 Scholar



Daisy Bonilla
Santa Fe South High School
 Elmhurst College



Emily Boren
U.S. Grant High School
 Oklahoma State University



Johnathon Bowen
Southmoore High School
 Oklahoma Baptist University



Sierra Briskey
Del City High School
 Oklahoma State University



Gavin Brison
Guthrie High School
 Oklahoma State University



Skylar Brown
Moore High School
 University of Oklahoma



Stephen Bruner
Oklahoma Centennial High School
 University of Central Oklahoma



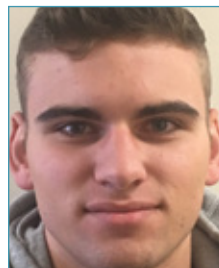
Emma Buckles
Deer Creek High School
 Samford University



Chandler Burton
Community Christian School
 University of Central Oklahoma



Blake Butler
Choctaw High School
 University of Central Oklahoma



Tristen Campbell
Emerson High School
 Southeastern Oklahoma State
 University

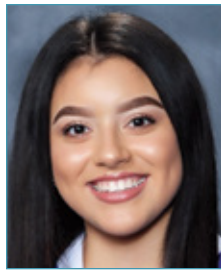


Clayton Champion
Christian Heritage Academy
 University of Oklahoma
F.M. Petree Community Foundation
 Scholar

Photo Courtesy Prestige



Nick Chen
Edmond Santa Fe High School
Northeastern University



Linda Cifuentes
Northwest Classen High School
Oklahoma Baptist University



Grace Clanin
Bethany High School
Oklahoma City Community College



Taylor Clowers
Piedmont High School
University of Central Oklahoma



Amaiya Coleman
Millwood High School
Langston University



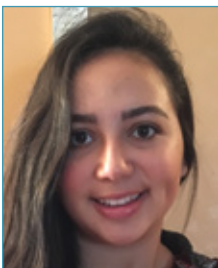
Vaishnavi Dalal
Edmond Santa Fe High School
Auburn University



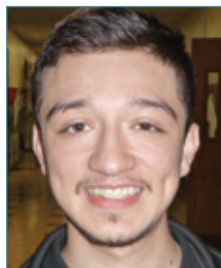
Ethan Davidson
Yukon High School
Southwestern Oklahoma State
University



Imani Davis
Star Spencer High School
Oklahoma State University



Martha Dela Rosa
Piedmont High School
Oklahoma State University - Oklahoma
City



Reynaldo Deleon
Harding Fine Arts Academy
Oklahoma State University



Katie Dennehy
Mount St. Mary Catholic High School
Oklahoma State University



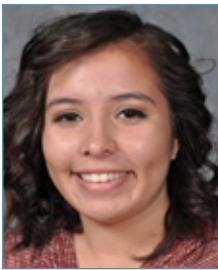
Jonathan Desouza
Edmond North High School
Oklahoma State University
Richard L. Sias Community Foundation
Scholar

Are you the first in your family to attend college?

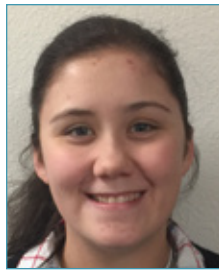
19 percent of students are first-generation, while 59 percent of students have at least one parent with a college degree.

(Statistics pulled from UCLA Higher Education Research Institute's Freshman Survey)

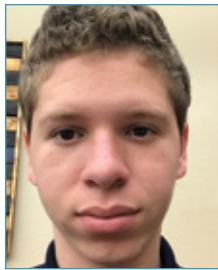




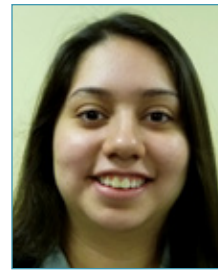
Zalma Diaz
Santa Fe South High School
 University of Central Oklahoma



Nicholette Dubose
Edmond North High School
 University of Central Oklahoma



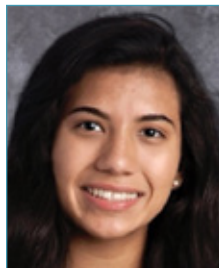
Kalan Edwards
Oklahoma Centennial High School
 Oklahoma State University
Nancy Coats-Ashley Community Foundation Scholar



Clariza Enciso
ASTEC Charter School
 University of Central Oklahoma



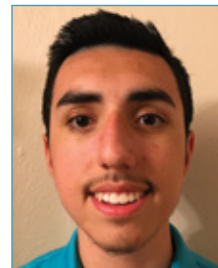
Cindy Escobar
ASTEC Charter School
 University of Central Oklahoma



Abril Escobedo
Southeast High School
 Oklahoma State University
Linda Lambert Community Foundation Scholar



Otis Evans
U.S. Grant High School
 University of Central Oklahoma
Central High School Alumni Association Community Foundation Scholar



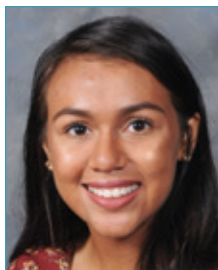
Eliot Flores-Portillo
Western Heights High School
 University of Tulsa
Anne Morgan Community Foundation Scholar



Ashlin Flowers
Carl Albert High School
 Oklahoma State University



Jazmine Foreman
Millwood High School
 University of Oklahoma



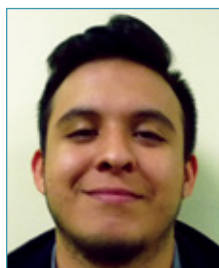
Sarahi Franco
Santa Fe South High School
 University of Oklahoma



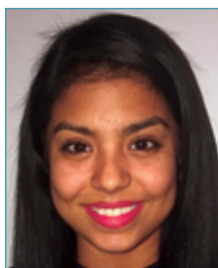
Autumn Franklin
Norman High School
 University of Oklahoma



Laura Fredrickson
Crossings Christian School
 University of Central Oklahoma



Jose Gallegos
ASTEC Charter School
 University of Central Oklahoma



Suzeth Gallegos
Southeast High School
 University of Oklahoma



Heber Garcia
U.S. Grant High School
 Oklahoma State University
John E. Kirkpatrick Community Foundation Scholar



Noemy Garcia
Harding Charter Preparatory High School
 University of Oklahoma



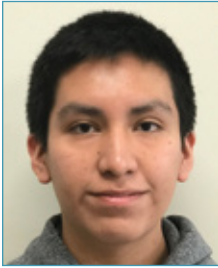
Yvonne Garcia
Capitol Hill High School
 Wichita State University



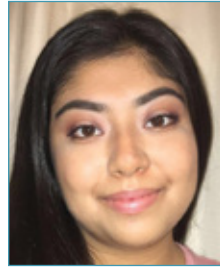
Patrick Geyer
Norman North High School
 University of Oklahoma



Ryan Glazier
Edmond Memorial High School
 University of Central Oklahoma



Axel Gonzalez
El Reno High School
 Southwestern Oklahoma State
 University



Edith Gonzalez
ASTEC Charter School
 Oklahoma State University - Oklahoma
 City



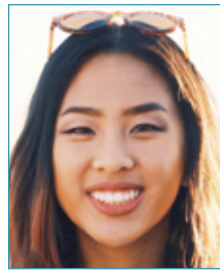
Juleisi Gramajo Ochoa
Putnam City West High School
 University of Oklahoma



Camille Gray
John Marshall High School
 Oklahoma State University
*Sue and Joe Esco Community
 Foundation Scholar*



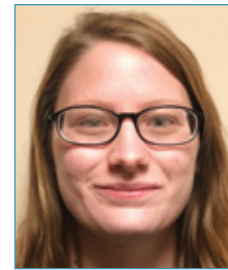
Mary Gutierrez
U.S. Grant High School
 Oklahoma State University



Jenny Ha
Western Heights High School
 University of Pennsylvania



Soliana Habtom
Edmond Santa Fe High School
 University of Central Oklahoma



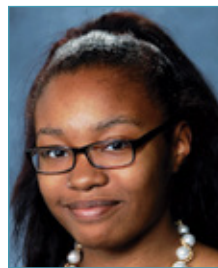
Megan Henderson
Harrah High School
 University of Central Oklahoma
*Harry Merson Community Foundation
 Scholar*



Carlos Hernandez
Southeast High School
 University of Oklahoma
*Central High School Alumni Association
 Community Foundation Scholar*



Jennifer Hernandez
Santa Fe South High School
 University of Central Oklahoma



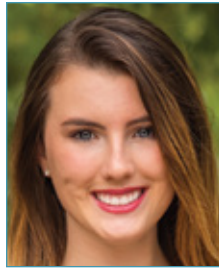
Shakendra Hill
Douglass High School
 Oklahoma City University
*Jane Jayroe Gamble Community
 Foundation Scholar*



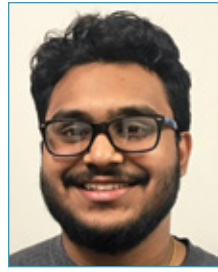
Tammy Ho
Western Heights High School
 University of Oklahoma



Cody Howe
Putnam City North High School
Oklahoma State University



Natalie Hugos
Casady School
University of Kansas
*J. Edward Barth Community Foundation
Scholar*



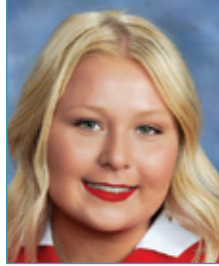
Safer Hussain
Crooked Oak High School
University of Oklahoma



Jesus Ibanez
Putnam City West High School
University of Oklahoma



Jennifer Ibarra
Southeast High School
University of Oklahoma



Anna Icenhower
Yukon High School
Butler Community College



Tarannum Imam
Putnam City High School
University of Oklahoma



Leslie Isaula
ASTECC Charter School
Oklahoma City Community College

How will you be paying for college?

A little over a third of students expect their family to contribute \$10,000 or more to their first year of college.

More than 80 percent of students plan to contribute less than \$3,000 of their own income.

More than half of students are concerned about their ability to pay for college.

(Statistics pulled from UCLA Higher Education Research Institute's Freshman Survey)



Britny Islas
Harding Fine Arts Academy
University of Central Oklahoma



Daniel Jackson
Moore High School
Harvard University
*Jean I. Everest Community Foundation
Scholar*



Yadira Jaramillo
Capitol Hill High School
Oklahoma State University



JiaJie Jiang
Edmond Santa Fe High School
University of Oklahoma



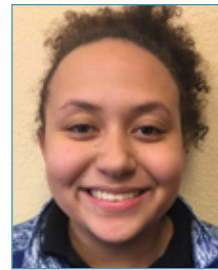
JiaYing Jiang
 Edmond Santa Fe High School
 University of Oklahoma



Sara Juarez
 Moore High School
 University of Oklahoma



Hrang Kap
 Putnam City High School
 Southwestern Christian University



Cecilia King
 Millwood High School
 University of Central Oklahoma



London Klechka
 Bishop McGuinness Catholic High School
 Rice University



Tonisha Lamkin
 ASTEC Charter School
 Oklahoma State University



Oscar Larios
 Santa Fe South High School
 University of Oklahoma



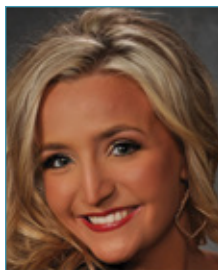
Alexis Le
 Mustang High School
 University of Oklahoma



Amy Le
 Harding Charter Preparatory High School
 University of Oklahoma
*Central High School Alumni Association
 Community Foundation Scholar*



Gregory Lew
 Carl Albert High School
 Oklahoma State University



Brookelinn Linn
 Westmoore High School
 University of Oklahoma



Wendy Liu
 Harding Charter Preparatory School
 University of Oklahoma
*Central High School Alumni Association
 Community Foundation Scholar*



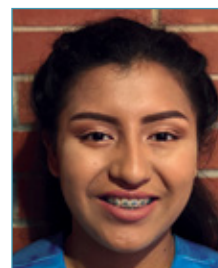
Haley Lollar
 Harding Fine Arts Academy
 University of Central Oklahoma
*Steve Davis Community Foundation
 Scholar*



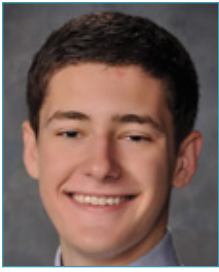
Adrian Lopez
 Dove Science Academy -
 Oklahoma City
 University of Texas at San Antonio



Jaquelin Lopez
 Classen School of Advanced Studies
 Kansas City Art Institute



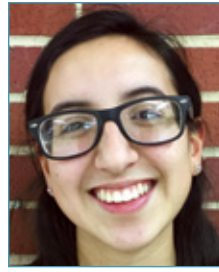
Cinthia Lopez-Perez
 Capitol Hill High School
 Oklahoma City Community College



Jacob Loucks
 Edmond Memorial High School
 University of Oklahoma



Monserrat Lozano
 U.S. Grant High School
 Rose State College



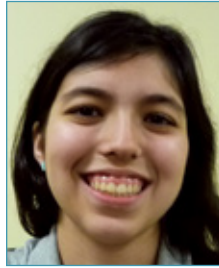
Liliana Macias
 Western Heights High School
 University of Oklahoma



Leslie Martinez
 Putnam City West High School
 University of Central Oklahoma



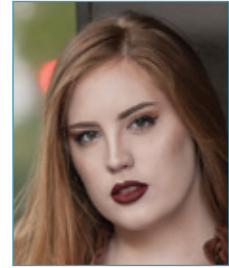
Roberto Martinez
 U.S. Grant High School
 University of Central Oklahoma
 Central High School Alumni Association
 Community Foundation Scholar



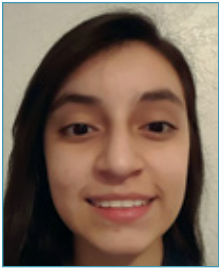
Estefhani Martinez Jimenez
 ASTEC Charter School
 Oklahoma City Community College



Cathryn McKinnis
 Oklahoma Christian School
 Colorado Christian University
 Clayton Rich Community Foundation
 Scholar



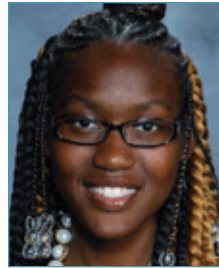
Katelyn McWater
 Harrah High School
 University of Central Oklahoma



Noeli Medina
 Westmoore High School
 Oklahoma State University



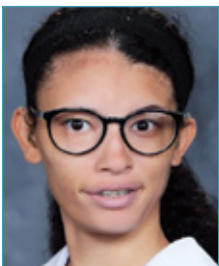
Amber Miller
 Yukon High School
 Oklahoma State University



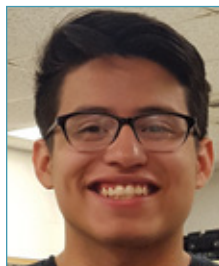
Shatoni Milton
 Douglass High School
 Oklahoma State University



Halima Mohamed
 Harding Fine Arts Academy
 University of Central Oklahoma



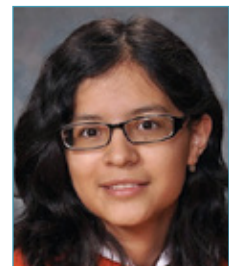
Meagan Molnar
 Northwest Classen High School
 Oklahoma State University
 Jim Clark Community Foundation Scholar



Jairo Montelongo
 Putnam City West High School
 University of Oklahoma
 Jeanette Gamba Community Foundation
 Scholar



Miguel Montelongo
 Santa Fe South High School
 University of Oklahoma



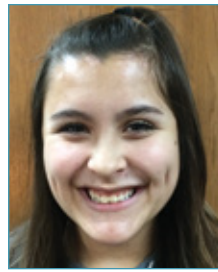
Maria Munoz
 Putnam City High School
 University of Oklahoma
 J.B. Sanders Jr. Community Foundation
 Scholar



Lin Ngo
Northwest Classen High School
 University of Oklahoma



Amy Nguyen
Putnam City High School
 University of Central Oklahoma



Asia Nguyen
Bethany High School
 University of Oklahoma



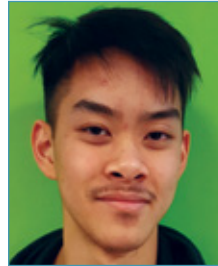
Kelsie Nguyen
Westmoore High School
 University of Central Oklahoma
*Nancy Payne Ellis Community
 Foundation Scholar*



Nhi Nguyen
Westmoore High School
 University of Oklahoma



Tin Nguyen
Harding Charter Preparatory High School
 University of Oklahoma



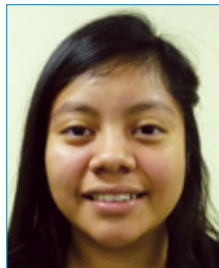
Tommy Nguyen
Classen School of Advanced Studies
 Oklahoma State University



Sofiat Odejimi
Putnam City North High School
 University of Oklahoma
*Mary Ann Bauman Community
 Foundation Scholar*



Viridiana Ortiz
Crooked Oak High School
 Rose State College



Enmi Oxlaj
ASTEC Charter School
 University of Central Oklahoma



Cristina Parra
Crooked Oak High School
 Oklahoma State University
*Kirkland Hall Community Foundation
 Scholar*



Makala Parsons
Luther High School
 Oklahoma State University



Avani Patel
Putnam City High School
 University of Oklahoma



Ravi Patel
Southmoore High School
 Georgetown University
*Richard Harrison Community Foundation
 Scholar*



Miguel Payan
ASTEC Charter School
 University of Oklahoma



Linh Maria Perez
Putnam City High School
 Oklahoma State University
*Frank McPherson Community Foundation
 Scholar*



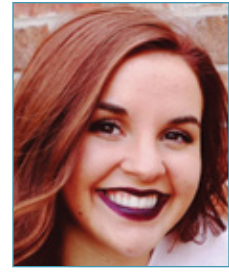
Amanda Pham
 Edmond Santa Fe High School
 University of Oklahoma



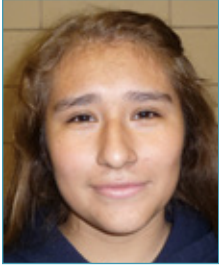
Jennifer Pham
 Southmoore High School
 University of Oklahoma



ThuLan Pham
 Classen School of Advanced Studies
 University of Oklahoma
*Embassy of Korea Community
 Foundation Scholar*



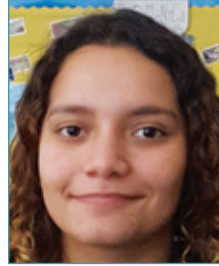
Kayden Prange
 Mustang High School
 Oklahoma State University



Yareli Ramirez
 Southeast High School
 Oklahoma City Community College
 Central High School Alumni Association
 Community Foundation Scholar



Aaron Ray
 Deer Creek High School
 Oklahoma State University
 James H. Holloman Jr. Community
 Foundation Scholar



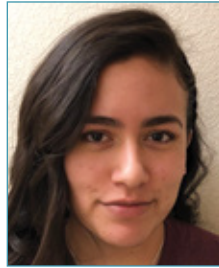
Veruska Resto
 Classen School of Advanced Studies
 Oklahoma City University
 John E. Green Community Foundation
 Scholar



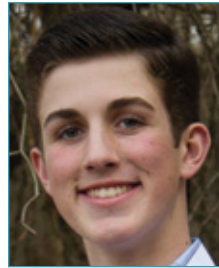
Kassandra Reyes
 Putnam City High School
 University of Central Oklahoma
 Paul W. Dudman Community Foundation
 Scholar



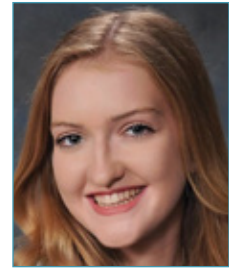
Michael Reyes Jr.
 Santa Fe South High School
 University of Oklahoma
 Ray T. Anthony Community Foundation
 Scholar



Jazmine Reyna
 Capitol Hill High School
 University of Oklahoma



Charles Reynolds
 Edmond North High School
 Oklahoma State University



Marissa Riley
 Deer Creek High School
 University of Oklahoma



Mykala Ring
 Putnam City West High School
 University of Oklahoma



Andrea Rocha
 Crooked Oak High School
 University of Oklahoma



Cristian Rodas-deLeon
 Harding Fine Arts Academy
 University of Central Oklahoma



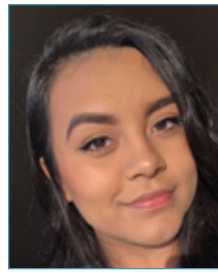
Miguel Rodriguez
 Westmoore High School
 University of Oklahoma



Nataly Rodriguez
Southeast High School
 University of Oklahoma



Macy Rogers
Westmoore High School
 University of Oklahoma



Belinda Ruiz
Putnam City West High School
 University of Central Oklahoma



Tatyana Russell
Southmoore High School
 University of Oklahoma



Shelby Sager
Edmond Memorial High School
 Oklahoma State University



Karina Salazar
El Reno High School
 Rose State College



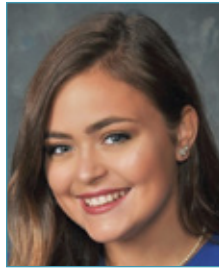
Angela Salcedo
U.S. Grant High School
 University of Oklahoma
*Charles B. McCauley Community
 Foundation Scholar*



Justin Sam
Yukon High School
 Oklahoma State University



Mariolise Sama
Norman High School
 University of Oklahoma



Katie Samsel
Moore High School
 Oklahoma City Community College



Kimberly Sanchez
El Reno High School
 Redlands Community College



Abigail Sandoval
Classen School of Advanced Studies
 University of Oklahoma

How much financial aid are you receiving?

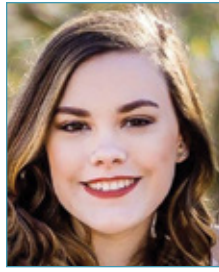
For financial aid that does not have to be repaid (like scholarships), 44 percent of students expect to receive less than \$3,000 and about one third expect to receive more than \$10,000.

(Statistics pulled from UCLA Higher Education Research Institute's Freshman Survey)





Evelyn Sandoval
 Northwest Classen High School
 University of Central Oklahoma
*James R. Daniel Community Foundation
 Scholar*



Makenna Sapp
 Norman High School
 Oklahoma City Community College



Wangslart Sawangsaen
 Classen School of Advanced Studies
 University of Oklahoma



Destiney Shaw
 Moore High School
 University of Oklahoma
*William O. Johnstone Community
 Foundation Scholar*



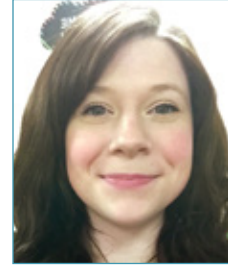
Ciarra Sheffield
 Putnam City High School
 University of Colorado Springs



Christopher Shropshire
 Norman North High School
 Oklahoma City Community College
*Dean A. McGee Community Foundation
 Scholar*



Damien Simmons
 Harding Fine Arts Academy
 University of Oklahoma



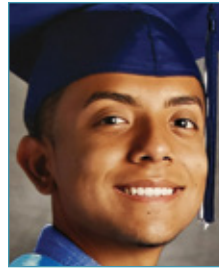
Madison Simmons
 Norman North High School
 University of Oklahoma



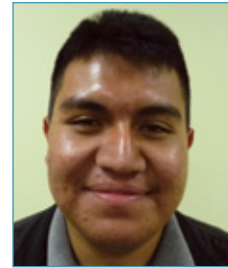
Quin Smiley
 Putnam City High School
 University of Oklahoma



Hannah Smith
 Mustang High School
 University of Arkansas - Fort Smith



Everardo Solis
 El Reno High School
 Oklahoma City University
*George Records Community Foundation
 Scholar*



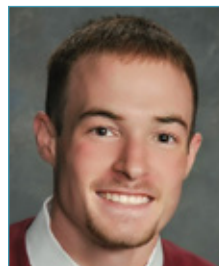
Pablo Soto
 ASTEC Charter School
 Oklahoma State University -
 Oklahoma City



Michael Stinnett
 Del City High School
 Rose State College



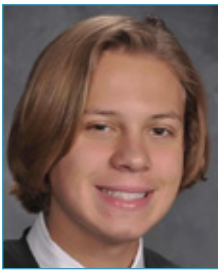
Rintu Sunny
 Putnam City High School
 Oklahoma City Community College



Dawson Suthers
 Putnam City North High School
 Oklahoma State University



A'Sharee Swanegan
 Northeast Academy for Health Sciences
 and Engineering
 University of Science and Arts of
 Oklahoma



Parker Taylor
 Midwest City High School
 University of Oklahoma
*Raymond Hefner Jr. Community
 Foundation Scholar*



Caleb Tijerina
 Southmoore High School
 University of Oklahoma



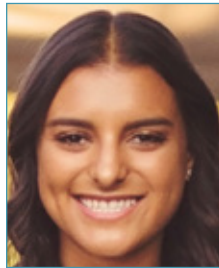
Emily Torres
 Harding Fine Arts Academy
 University of Central Oklahoma



Thuan Tran
 Westmoore High School
 University of Oklahoma



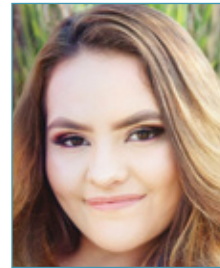
Tyler Travis
 Mustang High School
 Oklahoma State University - Oklahoma
 City
*Dan Hogan III Community Foundation
 Scholar*



Maribel Velasco
 Piedmont High School
 Oklahoma State University - Oklahoma
 City



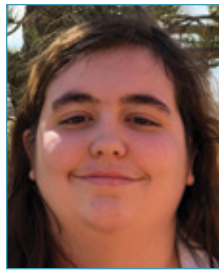
Leslie Velazquez
 Santa Fe South High School
 University of Central Oklahoma



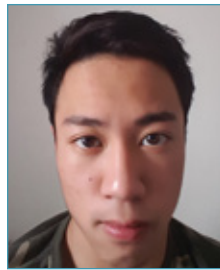
Jennifer Villafana
 Santa Fe South High School
 Oklahoma City Community College



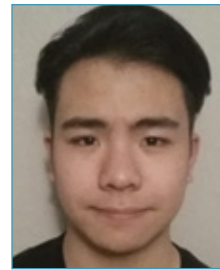
Keelon Viney-Young
 Midwest City High School
 Oklahoma State University



Giovanna Visalli
 Edmond Santa Fe High School
 University of Central Oklahoma



David Vo
 Bishop McGuinness Catholic High School
 University of Oklahoma
*Judy Love Community Foundation
 Scholar*



Johnny Vo
 Putnam City North High School
 Southwestern Oklahoma State
 University



Alissa Volcik
 Norman North High School
 University of Oklahoma



Jennifer Vu
 Western Heights High School
 University of Oklahoma



Sandra Vu
 Harding Charter Preparatory High School
 University of Oklahoma



Tiffany Vu
 Harding Charter Preparatory High School
 University of Oklahoma

What factors played a role in your college choice?

A college's academic reputation is very important to 65 percent of students, whereas 55 percent considered alumni career success as very important.

About 47 percent of students cite the cost of attendance as very important, while 47 percent identify financial assistance as a very important factor.

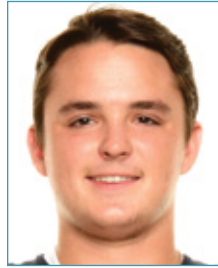
(Statistics pulled from UCLA Higher Education Research Institute's Freshman Survey)



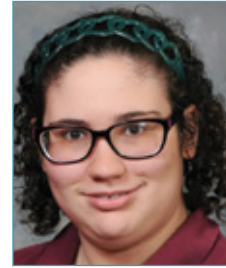
Quinn Whitley
Crooked Oak High School
Southern Nazarene University



Haley Wietelman
Oklahoma Christian Academy
University of Central Oklahoma



Easton Wilson
Heritage Hall School
University of Oklahoma
Morrison G. Tucker Community
Foundation Scholar



Melissa Wise
Dove Science Academy -
Oklahoma City
University of Central Oklahoma



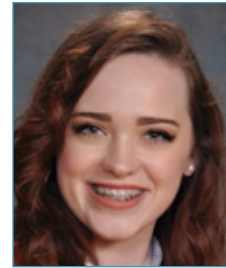
Bahman Yaghoubi-Yeganeh
Christian Heritage Academy
University of Oklahoma



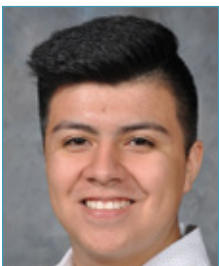
Logan Yelton
Jones High School
University of Central Oklahoma



Oscar Zepeda
Western Heights High School
University of Oklahoma



Meghan Zerbest
Putnam City High School
Oklahoma City University
James R. Tolbert III Community
Foundation Scholar



Leobardo Zuniga Jr.
Santa Fe South High School
Rose State College
Ronald J. Norick Community Foundation
Scholar



What is the Oklahoma City Community Foundation?

Established in 1969 by John and Eleanor Kirkpatrick, the Oklahoma City Community Foundation helps donors make a difference in the community through charitable giving. We are a 501(c)(3) charitable organization and one of more than 750 community foundations in the United States that work with donors to establish permanent endowment funds to benefit the community.

What is an endowment?

An endowment is a permanent fund established with a charitable gift. When we say permanent, we literally mean forever. Only a portion of these funds is available each year to support charitable efforts, like your scholarship award. The remaining portion is invested and will grow over time, ensuring it lasts forever.

What other programs do we support in the community?

We are able to award scholarships thanks to donors who make charitable gifts to provide opportunities for students to continue their education. We also work with donors to support hundreds of charitable organizations and activities in central Oklahoma, including arts programs, health care for those in need, beautification projects and community wellness programs.

Learn more about us at occf.org.

Trustees

Bond Payne, Chair
T. Scott Spradling, Treasurer
Steven C. Agee
Mike Collison
Talita DeNegri
Mark W. Funke
Leslie Hudson
Oscar Jackson
Ann Johnstone
Edward A. Krei
Jenny Love Meyer
Vicki Miles-LaGrange
P.B. Odom III
Tony Tyler
Steven C. Davis, General Counsel, Ex Officio
Christian K. Keesee, Ex Officio

Trustee Scholarship Initiative Committee

Oscar Jackson, *Chair*
Nolan Coyle
Kim Garrett Funk
Pat Kelly

Jessica Martinez-Brooks
Anita May
Vicki Miles-LaGrange
Diane Ming

D.J. Morgan
Gary Salwierak
Ashley Stevenson



www.occf.org



@occforg



/OCCFScholarships



/okcommunityfoundation



OKLAHOMA CITY
COMMUNITY FOUNDATION

P.O. Box 1146, Oklahoma City, OK 73101-1146 | 1000 N. Broadway Ave., Oklahoma City, OK 73102
405/235-5603 | www.occf.org