

CHARITABLE ORGANIZATION ENDOWMENT PROGRAM REPORT

OKLAHOMA CITY COMMUNITY FOUNDATION | FALL 2011



PHOTO COURTESY THE OKLAHOMAN

Longtime donor Pendleton Woods visits with Epilepsy Association of Oklahoma volunteer and past president Ramona Hannah.

Creating a Legacy of Helping Others

The more than 300 charities that participate in the Charitable Organization Endowment Program at the Oklahoma City Community Foundation rely on the generous support of donors to help build their endowment funds thus allowing them to better serve the community.

One donor that supports a number of charitable organization endowments with gifts as well as his time is Pendleton Woods. A former World War II prisoner of war, Mr. Woods credits his time in a German prison labor camp with teaching him a valuable lesson he applies throughout his life, "Only by helping each other can we stay strong."

After escaping from the prison camp and returning home from the war, Mr. Woods graduated from the University of Arkansas. In 1948, he married his wife Robin and the couple moved to

Oklahoma City where he began working for OG&E as an editor. Mr. Woods continued his military service through the Oklahoma National Guard until his retirement in 1983 after 41 years. In 1969, he joined Oklahoma Christian University and in 1981, he became the director of the college's American Citizenship Center. At 87, he continues to work part time at the center, reaching young people with a message of patriotism and public service.

Pendleton and Robin have been making gifts to charitable organization endowments at the Oklahoma City Community Foundation for more than 15 years. In 2007, Mr. Woods was instrumental in the establishment of the Freedoms Foundation at Valley Forge Medal of Honor Maintenance Fund, a permanent fund to assist with the upkeep of Oklahoma's Medal of Honor grove at Valley

Continued on next page

Contents

Charitable Organization Endowment Program = Valuable Services 7 | How to Support These Endowments 8
Consider an Estate Gift 9 | Endowment Program Investment Management 10



PHOTO COURTESY BOY SCOUTS OF AMERICA - LAST FRONTIER COUNCIL

Members of the Boy Scouts of America - Last Frontier Council go canoeing at Slippery Falls Scout Ranch in Tishomingo, Okla.

Continued from previous page

Forge. Each state has a one-acre area within the grove dedicated to its Medal of Honor recipients and is responsible for its maintenance. This fund participated in our 2011 Endowment Match Challenge that, thanks to the Woods and other donors, has more than doubled the endowment's fund balance.

"Pendleton Woods is the backbone of Freedoms Foundation at Valley Forge, Oklahoma City Chapter," says chapter president Sara Jo Odom. "Starting out with just a few hundred dollars, the endowment has grown to almost \$40,000 at this point in time. Almost all of that was because of Pen's doggedness and perseverance."

Mr. Woods is also a founding member and active volunteer of the Epilepsy Association of Oklahoma. In 1981, he helped the group establish an endowment fund at the Oklahoma City Community Foundation.

"We rely on our annual distribution from the endowment to support our youth camp for epileptics," says Ramona Hannah, volunteer and past president of the organization. "The camp can be quite expensive and this additional support allows us to provide individual counselors for each of the campers."

In 2011, the group nominated Mr. Woods for the MetLife Foundation "Older Volunteers Enrich America" award. He was selected as one of the nation's top three recipients and received a \$2,500 award that he directed into the association's fund.

"Mr. Woods is quite an asset to us," says Ramona. "Whether it's fundraising, speaking at support groups or helping out at camp, he does whatever he's called on to do."

Other nonprofit organizations the couple supports include the Boy Scouts of America - Last Frontier Council, Oklahoma County



Pendleton and Robin Woods

Senior Nutrition Program, Oklahoma City/County Historical Society, Oklahoma City Beautiful, the 45th Infantry Division Museum and many more. A lifetime board member of the Boy Scouts of America - Last Frontier Council, he has been active with the group for 75 years, including serving 16 years as Scoutmaster.

"Every organization has its 'legacy legends' who embody the spirit and traditions that make that organization unique," says Bob Spinks, Last Frontier Council executive committee member. "Pen Woods is one of a handful of those individuals whose lives are synonymous with the history of Scouting. The only thing Pen loves more than Scouting is serving others, and after all, the two go hand-in-hand."

Charitable Organization Endowments

As of August 1, 2011

With more than 300 participating organizations, our Charitable Organization Endowment Program is the largest of its type in the United States. These organizations depend upon the annual distributions from their endowments to help them meet the diverse needs of our community. As of June 30, 2011, the market value of the program exceeded \$144.7 million and distributions for the year were \$5.3 million. Many of the organizations have both a main endowment as well as sub endowment funds established for specific purposes. For more information on the organizations, please visit Central Oklahoma Charities at www.occf.org.

Arts & Culture

Allied Arts Foundation
Ambassadors' Concert Choir
American Banjo Museum
American Choral Directors Association
Arts Council of Oklahoma City
Canterbury Choral Society
Chamber Music in Oklahoma
- Berrien Kinnard Upshaw Fund
Cimarron Circuit Opera Company
City Arts Center
Fine Arts Institute of Edmond
Guy Fraser Harrison Academy for the Performing Arts
Individual Artists of Oklahoma/
Linda Jaeger Memorial
International Photography Hall of Fame & Museum
Jacobson Foundation
Jazz in June
Ladies Music Club of Oklahoma City
Lawton Philharmonic Society
Lyric Theatre of Oklahoma
- Curt Schwartz Scholarship
Melton Art Reference Library/
Legacy Collection
Jasmine Moran Children's Museum
National Cowboy & Western Heritage Museum
National Cowboy & Western Heritage Museum/Docent Council
OK Chorale
Oklahoma Arts Institute
Oklahoma Children's Theatre
Oklahoma City Ballet
Oklahoma City Museum of Art
- Fee - Milligan Endowment
- Carolyn A. Hill Collections Fund

- James C. & Virginia W. Meade Collections Fund
- Robert & Harriet Orbach Fund
Oklahoma City Orchestra League
Oklahoma Community Theatre Association
- Lil Williams Festival
Oklahoma Museums Association
Oklahoma Philharmonic
- J. Landis Fleming Fund
- Fund for Collaborative Performances
Oklahoma Shakespeare in the Park
Oklahoma Visual Arts Coalition
Paseo Artists Association
Photographic Society of America ■
Prairie Dance Theatre
Red Earth
- Kathleen Upshaw Fund
Science Museum Oklahoma Affiliated Fund

Community Development Organizations

Association of Fundraising Professionals
Cimarron Alliance Foundation
Crime Stoppers of Oklahoma City
Executive Service Corps of Central Oklahoma
Executive Women International
Impact Oklahoma
Jewish Federation of Greater Oklahoma City
- Ralph Dorn Fund
Junior Hospitality Club
Junior League of Oklahoma City
Kiwanis Club Special Activities
L'Alliance Francaise d'Oklahoma
Leadership Oklahoma City
League of Women Voters of Oklahoma
Midwest City Rotary Foundation
National Society of Colonial Dames of America in Oklahoma

What is a Charitable Organization Endowment?

It is a permanent fund at the Oklahoma City Community Foundation that generates annual income for a charitable organization. Our investment and distribution policies take into consideration that these funds need to provide income to the organizations for years to come.

Why Establish an Endowment Fund?

We provide four key elements for an organization to further secure its long-term viability:

1. A single endowment fund into which many donors can contribute at any time to further establish and build permanent support. We accept many types of marketable assets as charitable gifts to the endowment as well as credit card gifts through www.occf.org.
2. An endowment provides an annual cash distribution that allows staff to rely upon a steady and predictable income stream.
3. Our long-term investment strategies and efficient management of the funds provide for the future financial needs of the organization. Endowment funds are pooled so small funds receive the same investment returns and management services as larger funds.
4. We serve as a partner with each charitable organization, its staff and board of directors to help build the endowment through planned giving services, training and educational workshops.

What is Required to Establish a Fund?

Any 501(c)(3) public charity organization approved by the Trustees may establish an endowment fund with us. An endowment can be started with a \$20,000 contribution from the organization itself or from a donor or group of donors.

Navy League for USS Oklahoma City and E6-A Squadron
The Ninety-Nines Association of Women Pilots and Museum
Oklahoma Center for Nonprofits
Oklahoma City All Sports Scholarship Relief Fund
Oklahoma City Boathouse Foundation
Oklahoma City Foundation for Architecture

Continued on next page

Oklahoma County Bar Foundation
Oklahoma Lions Service Foundation
Redbud Foundation
Rotary Club 29 Foundation
Jim Thorpe Association
Women of the South

Education: Colleges, Universities & Vocational Schools

Hillel Foundation/University of Oklahoma
- Louis Berlowitz Lodge
- B'nai B'rith Milton J. Gordon Memorial
- John Horwitz Memorial Library
Langston University
- Rachel Starks Durham Scholarship
- Helen Aline Johnson Scholarship
- Kirkpatrick Scholarship
- Al Bert Prewitt Sr. & Audrey Monroe Prewitt Endowment
- Baxter L. Tilford Scholarship
Oklahoma Baptist University
- Business Program
- Hobbs Lectureship
- James Hurley Professorship
- Scholarships
Oklahoma Christian University
- Olen V. Hurst Scholarship Fund
- McBride Center for Faith & Literature
Oklahoma City Community College
Oklahoma City University
- Benham Professorship
- Film Institute
- Fine Arts Department
- Richard Kells Memorial Scholarship
- Law School Dean's Fund
- Law School Seminar Fund
-Petree School of Music Fund
- Societies Fund
Oklahoma State University/School of Civil & Environmental Engineering
Oklahoma State University - Oklahoma City/Horticulture Center
- Rumsey Garden
- Diane Miller Greenhouse Scholarship
Opportunities Industrialization Center
Redlands Community College
- Burrus Family Scholarship
- El Reno Chamber of Commerce/
Leslie F. Roblyer Memorial Scholarship

- Howard and Rebecca Rainey Hutson Scholarship
- Tyler Knecht Memorial Endowed Scholarship
-Tommy Pinkston Family Memorial Scholarship
- James Shaw Scholarship
- Trotter-Gambel Scholarship
St. Gregory's University
- Vogt Fund
- Scholarships for Women
Southern Nazarene University Scholarship
Francis Tuttle Foundation
United States Air Force Academy/John E. Kirkpatrick Fund
United States Military Academy/John E. Kirkpatrick Fund
United States Naval Academy/John E. Kirkpatrick Fund
University of Central Oklahoma
- Fine Arts Fund
- Kirkpatrick Service Awards
- Nursing Scholarship
University of Central Oklahoma Department of History and Geography/
Diane Neal Kremm Fund
University of Oklahoma Health Sciences Center
-Robert M. Bird Society
- Medical College Alumni Association Research Fund
- Watson Scholarship
University of Oklahoma Norman Campus
- Bizzell Memorial Library
- Jerry Cooper Marching Band Scholarship
- Fred Jones Jr. Museum of Art
- Naval ROTC

Education: Community Organizations

Friends of Libraries in Oklahoma
Friends of the Metropolitan Library System
Friends of the Mustang Public Library
Friends of the Norman Public Library
Institute of International Education
- Alice Pratt Internship Fund
- Colin and Brooke Lee Fund
Library Endowment Trust
Oklahoma City Literacy Council
Oklahoma Humanities Council

Oklahomans for Special Library Services
Payne Education Center
Weatherford Public Library Foundation ■

Education: Preschool-12th Grade

Calumet School Foundation
Casady School
- Carolyn Young Hodnett Scholarship
- Eleanor Kirkpatrick Fine Arts Chair
- John E. Kirkpatrick Fund
- Jane B. McMillin Memorial
- Records Family Scholarship
- Scholarships
Celebrations Preschool
Christ the King Catholic School
- James C. & Virginia W. Meade Fund
Christian Heritage Academy
Crescent Public Schools Foundation
Deer Creek Public Schools
Edmond Public Schools Foundation
- Eloise Rodkey Rees Inspirational Essay Award
- Rees Fund
El Reno Public School Foundation/
Wilbur and Jean Gardner Scholarship
The Foundation for Oklahoma City Public Schools
Guthrie Educational Foundation
Heritage Hall
- Landscaping Fund
- Reynolds Endowment
- Teacher Endowment
Erna Krouch Preschool
Markoma Christian Ministries
Bishop McGuinness Catholic High School
Midwest City - Del City Public Schools Foundation
Millwood School District Enrichment Foundation
Moore Public Schools Foundation for Academic Excellence
Mount St. Mary Catholic High School
- Tom Swyden Fund
Oklahoma Christian School
Oklahoma FFA Foundation
Oklahoma Foundation for the Education of Blind Children & Youth
Oklahoma Foundation for Excellence

Oklahoma School of Science and Mathematics
 Positive Tomorrows
 Putnam City Public Schools Foundation
 Rosary Catholic School
 Sacred Heart Catholic School
 St. Charles Borromeo Catholic School
 St. James Catholic School
 St. John Christian Heritage Academy/
 Waltine Lynette Jackson Endowment
 St. John's Episcopal School
 - Calvin and Peola Battle Scholarship
 - Edward Wade Dalton Memorial
 - Sherry Rowan Scholarship
 St. Mary's Episcopal School of Edmond
 St. Elizabeth Ann Seton Catholic School
 Special Care
 Trinity School
 Villa Teresa School
 Westminster School
 - Gregory L. Shadid Memorial Scholarship

Education: Scholarship and Support Organizations

Beta Eta Lambda Scholarship Foundation of Alpha Phi Alpha
 Kimberly Kay Clark Naval Reserve Association Scholarship
 Oklahoma Engineering Foundation Scholarship
 Oklahoma Pilots Association Vic Jackson Scholarship
 OSU Agricultural Education Scholarship Inc.
 Will Rogers Air National Guard Scholarship
 A. Kurt Weiss Lectureship
 Marie Welch Independent Insurance Agents of Oklahoma Scholarship

Environment & Animals Organizations

Best Friends of Pets
 Choctaw Parks Foundation/Historical Sculpture Gardens Perpetual Care
 Free to Live
 Friends of Martin Park Nature Center
 Morris Animal Foundation
 Myriad Gardens Foundation
 The Nature Conservancy/Oklahoma Chapter
 -James K. Hotchkiss Fund

Oklahoma City Beautiful
 -Morrison Tucker Award
 - Wildflowers Fund
 Oklahoma City Geological Foundation
 Oklahoma Horticultural Society
 Oklahoma Iris Society
 Oklahoma River Foundation
 Oklahoma Zoological Society
 The Tree Bank

Health-Related Organizations

Alzheimer's Association/Oklahoma & Arkansas Chapter
 American Cancer Society
 American Diabetes Association
 Arthritis Foundation/Oklahoma Chapter
 Cavett Kids Foundation Fund
 The Children's Center
 Children's Hospital Foundation
 Community Health Center/Mary Mahoney Memorial Health Center
 Epilepsy Association of Oklahoma
 Integris Baptist Medical Center
 - Baptist Burn Center
 - James L. Hall Jr. Center for Mind, Body & Spirit
 Integris Southwest Medical Center
 The Leukemia & Lymphoma Society
 Lupus Foundation of America/Oklahoma Chapter
 Dean A. McGee Eye Institute
 Mercy Health Center
 National Multiple Sclerosis/Oklahoma Chapter
 Oklahaven Children's Chiropractic Center
 Oklahoma Blood Institute
 Oklahoma Brain Tumor Foundation
 Oklahoma Medical Research Foundation
 - Fleming Scholarship
 - D. Allan & Dorothy B. Harmon Memorial
 - Research Fund
 Oklahoma Physical Therapy Foundation
 Planned Parenthood of Central Oklahoma
 - Cleo Cross Fund
 Prevent Blindness Oklahoma
 Referral Center for Alcohol and Drug Services
 Russell - Murray Hospice
 St. Anthony Hospital Foundation

United Cerebral Palsy
 Variety Care

History & Preservation Organizations

45th Infantry Division Museum
 95th Division Foundation
 Arcadia Historical & Preservation Society
 Break O'Day Farm and Metcalfe Museum
 Cleveland County Historical Society
 Edmond Historical Society
 Freedoms Foundation at Valley Forge - Oklahoma Chapter ■
 Friends of Oklahoma Historical Society Archives
 Frontier Country Historical Society
 William Fremont Harn Gardens and Homestead
 - 1889ers' Fund
 Oklahoma Archaeological Survey
 Oklahoma City-County Historical Society
 Oklahoma Heritage Association
 - Gary & Elizabeth Huckabay Scholarship
 - Scholarship Fund
 Oklahoma Historical Society/Cross S Ranch
 Oklahoma Historical Society/Guthrie Carnegie Library
 Oklahoma Historical Society/Oklahoma History Center
 - Emily Bell Fund
 - Nahzi & Annette Zudhi Fund
 Oklahoma Railway Museum
 Oklahoma State Firefighters Museum
 Oklahoma Westerners Indian Territory Posse
 Overholser Mansion
 - Dianne Gumerson Memorial
 Preservation Oklahoma
 Stillwater Museum Association/Sheerar Museum
 Westerners International

Neighborhood Associations

Capitol View Neighborhood Association
 Crown Heights - Edgemere Heights Neighborhood Association
 Edgemere Park Preservation Area
 Historic Brookhaven Neighborhood Association

Continued on next page

Mesta Park Neighborhood Association
Neighborhood Alliance of Oklahoma City
Oklahoma City Housing Services
Redevelopment Corp. Positively Paseo
Putnam Heights Preservation Area/
Anderson Family Endowment
Shartel Boulevard Development Authority

Religious Organizations

4HIM - His Healing Helping Hands
International Ministries
All Souls' Episcopal Church
-Music Fund
LifeChurch.tv
St. Paul's Episcopal Cathedral
SEARCH - In Search of the Lord's Way ■
Sisterhood of Temple B'nai Israel
- Seligson Flower Fund
Sisters of Benedict
Temple B'nai Israel Centennial Fund

Senior Adult Service Organizations

Areawide Aging Agency
Baptist Retirement Center
Daily Living Centers
Edmond Senior Community Foundation
Foundation for Senior Citizens
Oklahoma Alliance on Aging
Oklahoma County Senior Nutrition Program
Rebuilding Together
RSVP - Retired & Senior Volunteer Program
of Central Oklahoma

Social Services Organizations

Aid for Individual Development
American Red Cross of Central Oklahoma
CARE - Child Abuse Response and
Evaluation Center
CASA of Oklahoma County
Catalyst Behavioral Services
Catholic Charities of the Archdiocese of
Oklahoma City
Center for Children and Families Inc.
Central Oklahoma Association for the Deaf
& Hard of Hearing
A Chance to Change
Citizens Caring for Children
City Rescue Mission
Coffee Creek Riding Center

Consumer Credit Counseling Services of
Central Oklahoma
Deaconess Home/Pregnancy and Adoption
Services
EARC - Employment & Residential Centers
Easter Seals of Oklahoma
Exchange Club Center for the Prevention of
Child Abuse dba Parent Promise
Firststep - OKC Metro Alliance
Genesis Project
Goodwill Industries of Central Oklahoma
Heartline
Hope Center of Edmond
Infant Crisis Services
Jesus House
Legal Aid Services of Oklahoma
- Stan Foster Senior Law
- Judge Eugene Mathews Fund
Limbs for Life Foundation
Make-A-Wish Foundation of Oklahoma
Make Promises Happen/Central Oklahoma
Christian Camp
McCall's Communities for Life Enrichment
Meadows Center for Opportunity
Mental Health Association of Central
Oklahoma
NAIC - Norman Addiction Information &
Counseling
Neighbor for Neighbor of Oklahoma City
Neighborhood Services Organization
New View Oklahoma
Oklahoma Baptist Homes for Children
Oklahoma Foundation for the Disabled
Oklahoma Halfway House
Oklahoma Lawyers for Children
Oklahoma Safe Kids Coalition
Peppers Ranch
Rainbow Fleet
Regional Food Bank of Oklahoma
Reliant Living Centers of Oklahoma
Dale Rogers Training Center
SAFY - Specialized Alternatives for
Families & Youth
The Salvation Army
- Ed Leslie Fund
Scope Ministries International
Skyline Urban Ministry
Special Olympics Oklahoma
Speck Homes

Sunbeam Family Services
TEEM - The Educational and Employment
Ministry
United Methodist Boys Ranch
United Way of Central Oklahoma
Upward Transitions
Urban League of Greater Oklahoma City
Urban Mission
Willow Springs Boys Ranch
Work Activity Center
World Neighbors
Youth Services for Oklahoma County
YWCA of Oklahoma City

Youth-Serving Organizations

Big Brothers Big Sisters of Greater
Oklahoma City
Boy Scouts of America - Last Frontier
Council
Boys & Girls Club of Oklahoma County
Camp Fire USA - Heart of Oklahoma Council
Chesapeake Swim Club
Fellowship of Christian Athletes
- Stephen B. Payne FCA Scholarship
Girl Scouts - Western Oklahoma
Junior Achievement of Greater Oklahoma
City
Oklahoma City Police Athletic League
Denny Price Family YMCA of Enid
Salvation Army Boys and Girls Club of
Oklahoma City
UNITY - United National Indian Tribal Youth ■
Whiz Kids/City Care
YMCA of Greater Oklahoma City
- Downtown
- Eastside
- Northside
YMCA of Greater Oklahoma City/Camp Classen
- Eberly Scholarship
Youth Leadership Exchange

Charitable Organization Endowment Program = Valuable Services

The Oklahoma City Community Foundation is the community's leading advocate for endowment development and has more than 40 years of effective endowment administration. We have investment, distribution and administrative policies in place that allow for long-term endowment growth. In addition to our administrative oversight of the endowments, we also provide services and resources that add value to the organizations participating in the Charitable Organization Endowment Program. Our goal in offering these services is to provide the charities with the opportunity to strengthen their organizations. For more information on the program, contact Gayle Farley at 405/606-2910 or g.farley@occf.org or visit www.occf.org/coeprogram.

Development, Communications and Training

We help charitable organization staff encourage support for their endowments through a variety of resources including publications and our website. We will work directly with staff and board members to develop a unique strategy to encourage estate gifts to an organization's endowment. In addition, we publish an Annual Report that is distributed to donors, potential donors and community leaders and promotes all organizations participating in the program. Our electronic monthly newsletter is sent to each organization and provides useful summaries of articles and resources for charitable organizations.

Lunch for 2

In partnership with Cole & Reed, P.C., we offer *Lunch for 2*, a quarterly series of workshops for certified public accountants who work for or with charitable organizations. The workshops are free and provide two hours of continuing education credit for the attendees.

Charitable Organization Endowment Program Notebooks

A customized Charitable Organization Endowment Program Notebook is provided to each organization and contains historical information on gifts and grants, policies governing the fund, the fund agreement, a copy of the first four custom pages of the fund report and details about services we provide.

Online Resources @ www.OCCF.org

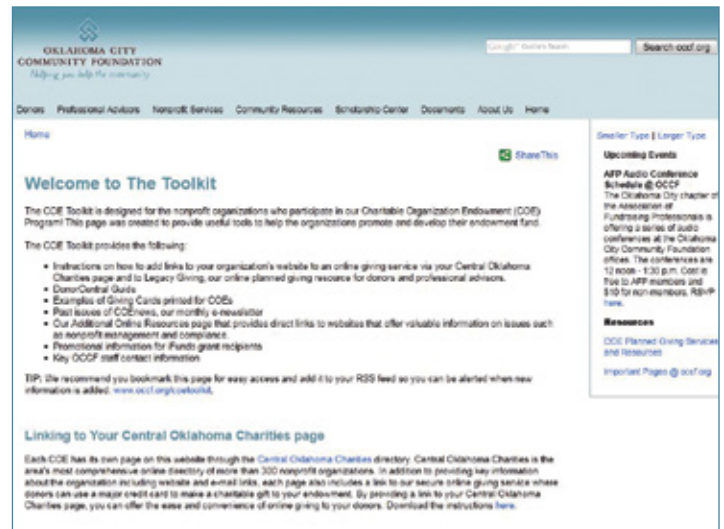
Our website offers several features created for the benefit of the charitable organizations including:

Central Oklahoma Charities is the area's most up-to-date searchable online nonprofit directory. Each charitable organization listing includes contact information for the organization, a description of services and a link to the organization's website and email.

The Toolkit provides resources to assist the charitable organizations in promoting and growing their endowment funds.

DonorCentral is a secure online reporting service we provide to representatives of each organization. DonorCentral allows the staff and board of directors to view current fund balances, financial statements, online gift history and quarterly investment performance.

Our **secure online giving** service offers donors the ease of using PayPal to make a gift to any of the charitable organization endowments.

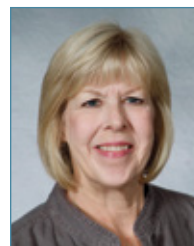


Legacy Giving is a section of our website devoted to information about estate or planned gifts. The section includes a philanthropic calculator that helps determine the tax and charitable benefits of certain types of gifts. You can learn more by going directly to www.occflegacy.org.

BOG and SOS Grants

We offer two grant opportunities for charitable organizations: Basic Operational Grants and Sustainable Organization Support (SOS) Grants. Through Basic Operational Grants, charitable organizations can apply for up to \$3,000 to help fund first-time needs such as strategic plans, audits, basic management or development consulting or training for board and staff. SOS Grants provide up to \$15,000 to help generate a fundamental improvement in the structure, systems or strategies, leading to a more stable and effective organization.

Your Program Contacts



Gayle Farley
405/606-2910
g.farley@occf.org



Kenneth Conklin
405/606-2926
k.conklin@occf.org

How to Support These Endowments

All of the charitable organizations serve an important role within our community and their endowments help to sustain their long-term viability. You can support these organizations through a charitable gift to their fund through the options outlined below. As a 501(c)(3) public charity, gifts made to endowment funds at the Oklahoma City Community Foundation receive the maximum tax benefits allowed. We provide you with the proper tax receipt documenting your charitable gift.

Online Gifts: We offer a secure online giving service through PayPal that accepts gifts to permanent endowments from donors using an American Express, Discover, MasterCard or Visa credit card. For many donors, online giving is an easy and convenient way to make a charitable gift at any time. To make an online gift, please visit www.occf.org/onlinegiving.

Cash: Cash is one of the easiest ways to make a charitable contribution. A cash contribution to a charitable organization endowment can be in the form of cash, check, money order or a cashier's check. You can mail a cash contribution to the Oklahoma City Community Foundation, for benefit of (list organization's name), P.O. Box 1146, Oklahoma City, OK 73101-1146.

Real Estate: Real estate may be given at appraised value. If appreciated, long-term capital gains tax may be avoided on the real estate appreciation if the property is contributed directly to the Oklahoma City Community Foundation for the benefit of a charitable organization endowment. Gifting real estate may allow you to preserve liquid assets while maximizing your charitable contributions.

Business-related Assets: We accept gifts of individually-owned business assets such as closely-held C-corp. and S-corp. stock, partnerships and LLCs.

Stocks, Bonds and Mutual Funds: If appreciated, marketable or closely-held securities such as stocks, bonds and mutual funds can offer you significant tax savings while maximizing your charitable contributions. The securities may be given so that you receive an income tax deduction equal to the fair market value of the donated assets while avoiding the long-term capital gains tax. We maintain accounts at most brokerage firms and can arrange for the transfer of the donated securities.

Oil and Gas Interests & Royalty Interests: Oil and gas royalty interests may be donated to the Oklahoma City Community Foundation for the benefit of a charitable organization. The contribution of oil and gas interests may allow for the preservation of liquid assets while maximizing the charitable contributions.

Life Insurance: Life insurance can be an effective means to fund a charitable gift without significant outlays of cash. Simply designate a charitable organization endowment as the beneficiary.

IRA Charitable Rollover: Available through Dec. 31, 2011, traditional IRA account owners age 70-1/2 or older may

Giving back with retirement fund assets

Giving back is a way of life for Olen and Judy Hurst. In 1999 following Olen's retirement from Kerr-McGee, the couple relocated to Stroud after a tornado destroyed much of the town. After moving back to Oklahoma from Houston, they had plans to buy a home in Edmond. When they drove through Stroud and witnessed the damage from the recent



Olen and Judy Hurst

storm, the couple decided to move there instead to help rebuild the community. This is just one example of the Hursts' giving nature.

A 1955 graduate of Classen High School, Olen attended Oklahoma State University where he received bachelor's and master's degrees in chemical engineering. In 1958, he and Judy were married and in 1971, he began a 28-year career with Kerr-McGee. He retired in 1999 as the director of international crude supply.

After moving to Stroud, the couple became active in the community and supported the rebuilding of the Stroud Regional Medical Center, which had been destroyed by the tornado. Olen is the chairman of the Stroud Regional Medical Center Foundation, has served as president of the Lion's Club and was named 2002 Citizen of the Year by the Stroud Chamber of Commerce.

The Hursts have three sons, two of which attended Oklahoma Christian University. Through their experience with the school, they were moved by stories of students traveling on mission trips.

"God has greatly blessed us, and in turn we wanted to help give back to these young people," says Olen.

In 2011, through a gift of retirement fund assets, the couple established the Olen V. Hurst Oklahoma Christian University Fund at the Oklahoma City Community Foundation to support student missionaries. In appreciation, Oklahoma Christian University matched the Hursts' gift, doubling the endowment fund.

For more information on how you can support charitable organization endowments with a planned gift, please contact Joe Carter at 405/606-2914 or j.carter@occf.org.

make a direct transfer of up to \$100,000 a year to a qualified charitable organization without incurring income taxes on the gift. As a qualified public charity, we can help execute IRA transfers for charitable gifts to the following types of funds: Fund for Oklahoma City, Field of Interest Funds, Donor Designated Funds and Scholarship and Award Funds. For more information on the IRA Charitable Rollover please contact Joe Carter at 405/606-2914 or j.carter@occf.org or Rhonda Godwin at 405/606-2916 or r.godwin@occf.org.

Consider an Estate Gift to an Endowment Fund

Including a charitable gift in your estate plans to benefit an endowment fund is an easy and effective giving option. A portion of our website is devoted to planned giving. At www.occflegacy.org you will find important resources for both you and your professional advisor to create charitable giving plans that work for you and benefit your favorite charitable organization. In addition, there is a philanthropic calculator that can help determine the tax implications of certain gifts such as charitable gift annuities and charitable trusts.

What is an Estate or Planned Gift?

An estate or planned gift (also referred to as a deferred gift) describes any charitable gift that is made as part of your tax or estate plan. This type of gift may provide for an income benefit for you or can provide a tax deduction exceeding a single year. At the Oklahoma City Community Foundation, we recognize that planned giving needs vary from donor to donor and that is why we provide the options outlined on this page. If you are considering a planned gift, we encourage you to discuss the topic with your professional advisor. For more information on how we can work with you, please contact Joe Carter at 405/606-2914 or j.carter@occf.org.

Charitable Gift Annuities

A charitable gift annuity (CGA) provides individuals 55 years or older with not only income for life but also the peace of mind of making a difference through a lasting gift to the community. Through a CGA, you can make a gift with cash or other assets of at least \$20,000, receive income for life and, at the end of the annuity, the remaining assets will go to the charitable fund or funds of your choosing. We offer six CGA options.

Charitable Remainder Trusts

A charitable remainder trust allows you to place assets in a trust that pays annual income to you or a beneficiary for life or a term of years. You can avoid capital gains tax on the donated assets and also receive an income tax deduction for the fair market value of the remainder interest of the trust. In addition, the trust is removed from the estate, reducing subsequent estate taxes. Upon the trust's termination, the remaining assets will benefit an existing endowment or advised fund.

Charitable Lead Trusts

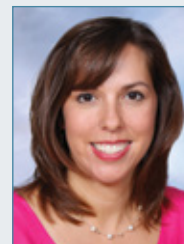
A charitable lead trust allows you to transfer assets to the Oklahoma City Community Foundation that then pays a percentage of the assets' value to an endowment you've designated. At the end of the trust term, the remaining assets are passed on to designated heirs. Charitable lead trusts offer several advantages including greatly discounted gift or estate taxes and any growth in the assets will be free of these taxes for the heirs. In certain cases, a charitable lead trust may also provide an income tax deduction at the time the trust is created.

Retirement Plan Assets

Retirement plan assets are subject not only to estate taxes, but also income taxes. To reduce this burden on heirs and to create a charitable legacy, you can use any retirement plan asset to

How a professional advisor helps her clients

We are fortunate to work with professional advisors to help their clients accomplish their charitable goals. One such advisor is attorney Christin Mugg Adkins whose Edmond law firm offers estate planning services including planned charitable giving. Since 2007, Christin has referred several clients to the Oklahoma City Community Foundation.



Christin Mugg Adkins

"Many clients know which charitable areas they would like to support, but are not familiar with the specific organizations serving that need in the community," says Christin. "It is rewarding to me to be able to connect them with a resource such as the Oklahoma City Community Foundation that can help them meet their charitable goals."

Many of Christin's clients who wish to include planned gifts in their estate plans have utilized our Central Oklahoma Charities online directory of the more than 300 charitable organizations for whom we administer endowment funds. Together with our planned giving staff, she has provided guidance to her clients and educated them on various charitable organizations serving their interests.

Christin says she also finds the flexibility of our planned giving options to be a great benefit to her clients. Recently, one of her clients established an estate plan that includes a bequest to create an endowment that will benefit his alma mater and a nonprofit that promotes animal welfare. He was pleased to know that if these two beneficiaries cease to exist, the Oklahoma City Community Foundation would direct the endowment's distributions to like organizations.

"It really gave him some piece of mind to know that someone would carry out his charitable wishes after his death," says Christin.

Our planned giving staff works with professional advisors confidentially and free of charge to help determine the best charitable giving alternatives available for their clients. We offer a number of simple and flexible vehicles that provide maximum tax benefits.

"The Oklahoma City Community Foundation helps me simplify the estate planning process for my clients and provides them with the flexibility they desire," says Christin. "It has been a great fit and a good partnership."

For more information on how we can work with you and your clients, please contact Joe Carter at 405/606-2914 or j.carter@occf.org.

maximize charitable contributions by establishing an Advised Fund at the Oklahoma City Community Foundation. Your heirs can serve as advisors to the fund, ensuring that your charitable interests are continued into the future.

Bequests

With a bequest, you can designate a percentage, the residual or your entire estate to benefit an existing fund or to establish a new fund. This option may provide you and your family with substantial reductions in federal estate taxes. We offer sample bequest language at www.occf.org/plannedgivingservices.

Maintaining a disciplined approach to investment management

Since 1969, the Oklahoma City Community Foundation has been the metropolitan area's leading advocate for building endowment funds. Our investment policy benefits all endowments, large and small, because we balance the use of active managers and index funds in a way that maximizes the opportunity for adding value while keeping the cost low. As a result, we have produced annualized returns over 10 years that exceed the markets but at a cost much lower than mutual funds or other balanced fund alternatives. We are pleased to report that the return on our pooled investment fund for FY2011 was 21.57 percent.

Our investment policy is specifically designed for an endowment fund to provide annual distributions for charitable purposes in perpetuity. The goals of our policy are to allow the fund to generate distributions, grow to accommodate inflation and continue to exist in the future. Because of these goals, our investment policy has four major objectives:

- Capital preservation
- Inflation protection
- Continuing source of annual distribution for charitable purposes
- Investment return in the top third of professionally managed funds

Our Investment Committee uses a style-based investor management system and allocates assets to specific investment styles. The committee hires investment managers to manage a particular style. We use eight active managers; six for equities and two for fixed income investments. Approximately 60 percent of the pooled investments are actively managed.

As endowment fund investors we have a perpetual horizon and maintain a disciplined approach to long-term investment strategy while utilizing short-term tactical allocations to add value when there is opportunity. We also remain committed to a long-term diversification strategy with an allocation to high quality fixed income assets even in times of booming equity investments. In addition, our prudent distribution policy, summarized below, provides a structured method of making

FY2011 Financial Highlights

General Pool Total Return	21.57 percent
10-Year Performance	5.42 percent
Gifts to Charitable Organization Funds	\$3 million+
Distributions to Charitable Organization Funds	\$5.3 million

distributions from an endowment that protects the stream from inflation thus creating a predictable annual distribution and allows the Investment Committee to focus on maximizing total investment return.

While the volatility of the markets in recent years has been a challenge, our Investment Committee has remained disciplined in staying with a policy that emphasizes diversification of assets, quality investments and a long-term perspective. Both the committee and our Trustees view these responsibilities as among the most important that we provide as managers of the community's endowment.

Distribution Policy

Since 1989, we have employed a distribution policy that permits endowments to capitalize on good investment years as well as protect them in low or negative return markets. Cash distributions from most of the endowment funds we administer are based upon a spending policy that calls for distributing 5 percent of the fund's average market value. The remaining investment return is left in the fund to increase the value. The annual distribution amount is based upon a rolling quarter average of the fund's market value. Effective FY2011 we increased the number of quarters from eight to 12 thus further protecting the distribution from market fluctuations. Thanks to the policy, this fall we will distribute \$5.3 million back to the more than 300 organizations who participate in the Charitable Organization Endowment Program. Visit www.occf.org for more information on our investment and distribution policies.

Investment Performance Pooled Investments as of June 30, 2011

	Year Ended June 30, 2011	Three Years Ended June 30, 2011	Five Years Ended June 30, 2011	10 Years Ended June 30, 2011
Equities				
Oklahoma City Community Foundation	32.36%	3.98%	3.79%	4.32%
S&P 500	30.68%	3.33%	2.94%	2.72%
Fixed Income				
Oklahoma City Community Foundation	4.08%	5.78%	6.21%	5.60%
Barclay's Capital G/C Int.	3.77%	5.75%	6.08%	5.34%
Total Return				
Oklahoma City Community Foundation	21.57%	5.45%	5.23%	5.42%
65% S&P 500/35% Barclay's Capital G/C Int.	21.26%	4.90%	4.62%	4.07%

The 2011 Endowment Match Challenge

In April, our Trustees launched the 2011 Endowment Match Challenge to encourage donor support of the charitable organization endowment funds with lower fund balances. Through Dec. 31, 2011, gifts made to the participating endowments are matched dollar for dollar up to \$5,000, \$7,500 or \$10,000, which means the organizations can increase fund balance by as much as \$10,000 to \$20,000. Match amounts are based on the endowment fund balance as of Dec. 31, 2010.

A total of 45 organizations are participating in the Challenge and as of June 30, 11 organizations had completed their match. Organizations that completed the match by June 30 will find the total amount contributed and matched reflected in their FY2011 year-end fund balances. While the match contributions did not impact annual distributions this year since distributions are calculated based on fund balances as of March 31, 2011, organizations that successfully grow their endowments through the match will see increases in their annual distributions beginning in 2012.

One organization that has completed the match is Jazz in June, a nonprofit organization that hosts an annual three-day music festival in Norman. In 2007, the group established an endowment at the Oklahoma City Community Foundation and has worked to build its fund balance by regularly participating in endowment match opportunities. Through their participation in the 2011 Endowment Match Challenge, Jazz in June has nearly doubled its fund balance.

“When we decided to create an endowment fund, we chose the Oklahoma City Community Foundation specifically because of the match programs they and the Kirkpatrick Family Fund offer,” says Norman Hammon, development director for Jazz in June. “Our donors recognize that to maintain a free festival we must establish a stable, perpetual funding source and they have gone above and beyond to help us continue to build our endowment.”

Participating Charitable Organization Endowments

Alzheimer's Association/ Oklahoma & Arkansas Chapter	National Cowboy & Western Heritage Museum - Docent Council
American Choral Directors	OK Chorale
Arcadia Historical and Preservation Society	Oklahoma Alliance On Aging
Association of Fundraising Professionals, Oklahoma Chapter	Oklahoma Archeological Survey
Beta Eta Lambda Scholarship Foundation of Alpha Phi Alpha	Oklahoma Blood Institute
CASA of Oklahoma County	Oklahoma Brain Tumor Foundation
Center For Children & Families, Inc.	Oklahoma City Literacy Council
Christian Heritage Academy	Oklahoma City University Film Institute
Cimarron Alliance Foundation	Oklahoma Railway Museum
Cleveland County Historical Society	Peppers Ranch
EARC - Employment and Residential Covers	Photographic Society of America
Executive Service Corps Of Central Oklahoma	Preservation Oklahoma
Freedoms Foundation at Valley Forge	Prevent Blindness Oklahoma
Friends Of Libraries In Oklahoma	Russell-Murray Hospice
Guthrie Educational Foundation	SAFY - Specialized Alternatives for Families & Youth of Oklahoma
Hope Center of Edmond	SEARCH - In Search of the Lord's Way
Impact Oklahoma	Southern Nazarene University Foundation
Jazz in June	St. Paul's Episcopal Cathedral
LifeChurch.tv	Temple B'nai Israel - Sisterhood Fund
Limbs for Life Foundation	Jim Thorpe Association
Midwest City Rotary Foundation	University of Central Oklahoma - Department of History and Geography
NAIC - Norman Addiction Information & Counseling	Weatherford Public Library Foundation
	Whiz Kids

How to make a gift to the 2011 Endowment Match Challenge:

1. Visit www.occf.org/match2011 to view a list of match participants.
2. Select the organization or organizations you wish to make a gift to, which will direct you to the Central Oklahoma Charities webpage.
3. Click Donate Now and follow the simple steps to make a gift via PayPal with a MasterCard, Visa, Discover or American Express.
4. Or gifts can be mailed to:
Oklahoma City Community Foundation
P.O. Box 1146
Oklahoma City, OK 73101-1146



PHOTO COURTESY SHEVAUN WILLIAMS & ASSOCIATES

Contemporary blues artist Murali Coryell performs at the 2011 Jazz in June festival in Norman. The organization participated in the 2011 Endowment Match Challenge and nearly doubled its endowment fund balance.



OKLAHOMA CITY
COMMUNITY FOUNDATION

Helping you help the community

P.O. BOX 1146 73101-1146
1000 N. BROADWAY AVE.
OKLAHOMA CITY, OK 73102



NON-PROFIT ORG.
U.S. POSTAGE
PAID
OKLAHOMA CITY, OK
PERMIT NO. 255



Confirmed in Compliance with National
Standards for U.S. Community Foundations



This report is printed on Accent Opaque which contains a minimum of 10% postconsumer waste.

Giving Back Has Never Been So Easy!

At the Oklahoma City Community Foundation, we make it easy for you to make gifts to any of our charitable organization endowment funds through our secure, online giving service. We now accept online gifts through PayPal, making it simple for you to make a gift with a MasterCard, Visa, Discover or American Express credit card at any time.

Visit www.occf.org/onlinegiving or use any barcode reader app on a smartphone to scan the code and follow the step-by-step instructions on the website. Once the gift is processed, donors will receive an electronic receipt from PayPal. You can also set up a recurring gift to automatically process through PayPal each month.

If you have any questions about making an online gift, please contact Jennifer Stewart at j.stewart@occf.org or 405/606-2912. The process is easy, convenient and available 24/7!



Connect with us!



www.facebook.com/occf.org
www.facebook.com/OCCFscholarships



@occforg



www.youtube.com/occforg

Board of Trustees

Steve Mason, President

Mary Ann Bauman M.D.
James C. Clark
Judge Nancy Coats-Ashley
James Daniel*
Steven C. Davis
Kirkland Hall
Leslie Hudson
Oscar Jackson
Jane Jayroe
Ann Johnstone**
Judy Love*
Harry Merson
J. Larry Nichols
Bond Payne
Tony Tyler

Christian K. Keesee
Ex-Officio

* Term expired June 30, 2011

** Term began July 1, 2011

Phone 405/235-5603
FAX 405/235-5612