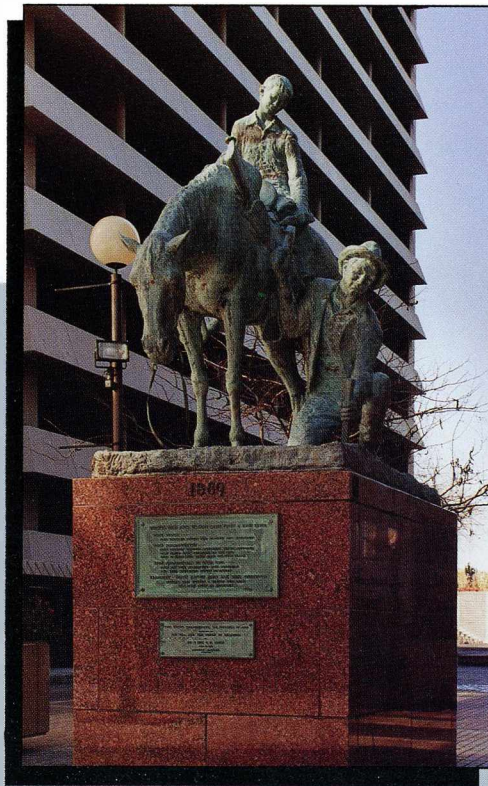


Oklahoma City
Community Foundation

**ANNUAL REPORT
NINETEEN NINETY**



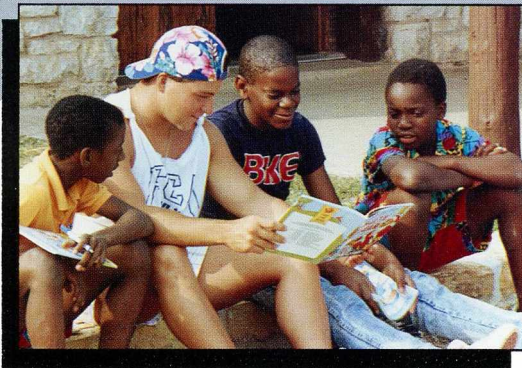
The assets of the Community Foundation continue to increase. The total capital base at year end, \$44,824,533, was achieved through new contributions of \$1,773,599 and realized capital gains of \$685,603. The total earnings of \$2,801,114 set a new record for investment income.

Two important policy additions made during 1990 will enhance the impact of these investment returns to all Funds. All Funds will receive a proportionate share of the total investment earnings of the Community Foundation. Additionally, each Fund will share in the capital gains realized from investments. These policies will allow a stable income source for charitable support while increasing the capital value of each fund for the future.

More than 240 organizations received grants and distributions exceeding \$2,400,000 in 1990. Inspired by the creative option developed by our Centennial Grants, a New Initiatives Grant program was announced this year. These grants from the Fund for Oklahoma City will award a series of individual grants in amounts up to \$25,000 over a three year period. The grants will be targeted to the development of new projects and the expansion of new services within the Oklahoma City community.

1990 was a year of strong investment performance and new grant initiatives. This first year of our third decade was also one of promise, underwritten by policies that will help keep the path clear toward continued steady growth and creative community thinking.

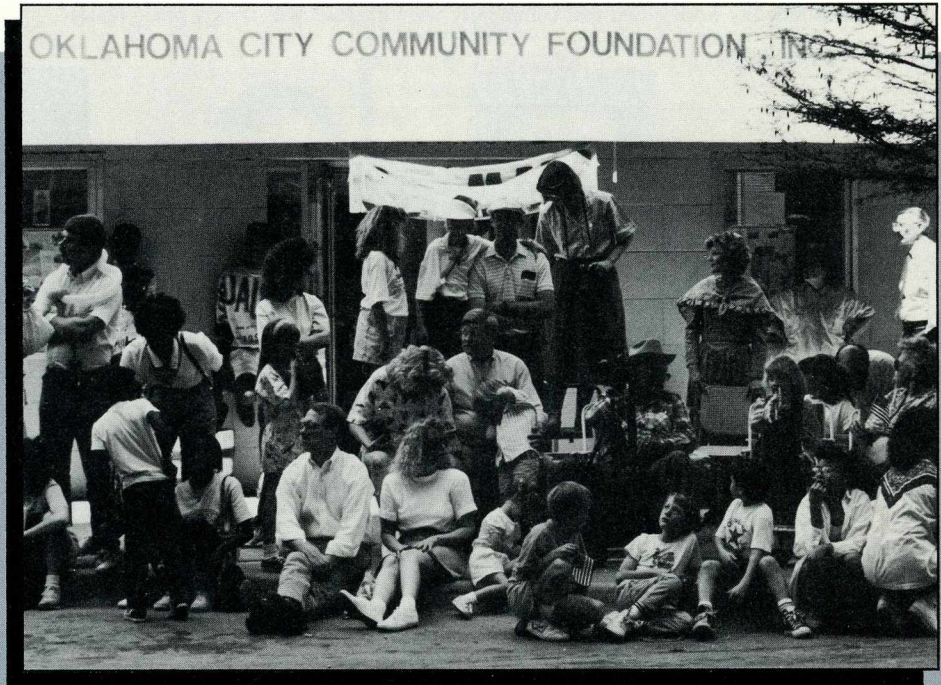
Our four Fiscal Trustee Banks, Liberty Bank, First Interstate Bank, Bank of Oklahoma, and Trust Company of Oklahoma, achieved an excellent investment return of 13.63 percent for the fiscal year ending June 30, 1990. More importantly, the Trustees of the Community Foundation have focused increased attention on investment policies and have hired an outside investment advisor to assist them. This active and responsible attitude toward the management of assets is a strength of the Community Foundation.



Both the distribution of endowment income and the support from the Fund for Oklahoma City acknowledge the Community Foundation's expanding role in providing basic support and generating new services in Oklahoma City.

Seven new Designated Funds were established in 1990 to provide endowment support for Oklahoma City nonprofit organizations. Six new Name Funds were established by donors as permanent charitable funds supporting activities in the Oklahoma City community.

We continue to serve the community's needs through the Escrow Account program, a group of funds temporarily housed at the Community Foundation to serve the interests of donors and charities alike. More than forty students received assistance through the scholarship programs administered by the Community Foundation. Hundreds of both young and elderly attended events of the 1989 Olympic Festival with tickets provided by the Community Foundation.



Each year allows us to build on past decades of contributions. As you read through this annual report, the stories of this year are surrounded by the names and deeds of past years. The Community Foundation allows those present and past contributors to Oklahoma City to continue to be part of our community's future.

TABLE OF CONTENTS

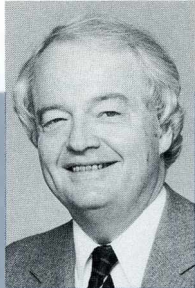
Trustees	page 2
Name Funds	page 4
Grants and Distributions	page 16
Auditors Report	page 22
An Invitation	page 24

Credits

Coordinator — Nancy Anthony
Copy and Research — Karen Browne
Design and Layout — Linda Garrett
Printing — Journal Record Press

Trustees

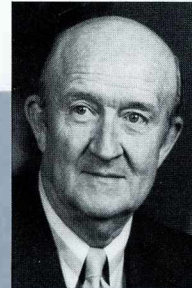
The Board of Trustees of the OKLAHOMA CITY COMMUNITY FOUNDATION is composed of nine members representing a broad range of community leadership and interests. Six of the members are appointed by the Mayor and City Council of Oklahoma City, the Oklahoma City Chamber of Commerce, the United Way of Greater Oklahoma City, Oklahoma City University, the University of Oklahoma, and by the Fiscal Committee which manages the assets of the Community Foundation. The remaining three trustees are selected from the community at large by the Trustees Committee. This structure assures that the Community Foundation is governed by a group of community leaders and that community-wide interests will always predominate.



James R. Tolbert, III
President
Appointed by the Mayor
and City Council of
Oklahoma City



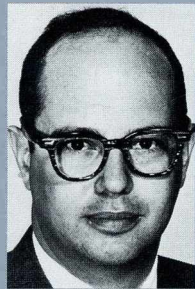
George J. Records
Vice President
Appointed by the
Fiscal Committee



Ray T. Anthony
Appointed by the
United Way of Greater
Oklahoma City



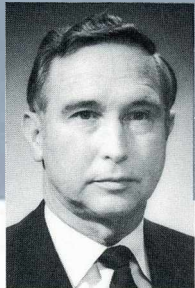
John E. Kirkpatrick
Appointed by
Oklahoma City
University



J. Edward Barth
Appointed by the
Trustees Committee



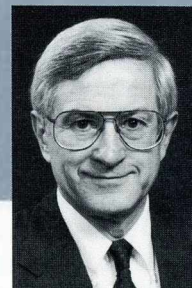
Dan Hogan, III
Appointed by the
Oklahoma City
Chamber of Commerce



Frank McPherson
Appointed by the
Trustees Committee



Nancy Payne
Appointed by the
Trustees Committee



Richard Van Horn
Appointed by the
University of Oklahoma



John L. Belt
Secretary and
General Counsel



Eleanor J. Maurer
Treasurer



Marilyn Myers
Assistant
Secretary



Nancy B. Anthony
Executive
Director



Carla S. Pickrell
Comptroller



Susan Campbell
Staff



Kevin Smith
Staff

Affiliated Fund Trustees

The OKLAHOMA CITY COMMUNITY FOUNDATION has four 509(a)(3) support organizations which are called Affiliated Funds. Each has its own board of trustees, and is separately incorporated as a non-profit organization. The Community Foundation appoints a majority of the board of each Affiliated Fund and provides all of the management and investment services. The Trustees of each fund make the decisions about the distribution of the earnings and provide direction for the investment of the fund's assets.

Affiliated Funds provide customized management for the assets of a charitable foundation and the endowment funds of non-profit organizations.

WILLIAM E. AND MARGARET H. DAVIS FAMILY FUND (1986)

William E. Davis
Richard Davis
Charles Davis
Nancy Payne
William Cheek
Randolph Everest
John Boland, M.D.

OMNIPLEX AFFILIATED FUND (1987)

Michael Stewart
William V. Carey
Steve B. Haneborg
Ray Anthony
Don Balaban

KIRKPATRICK CENTER AFFILIATED FUND (1988)

George Records
Don Balaban
John E. Kirkpatrick
James G. Harlow, Jr.
Eleanor Maurer

KIRKPATRICK FAMILY AFFILIATED FUND (1988)

Dan Hogan
Nancy Payne
Don Balaban
John E. Kirkpatrick
Eleanor B. Kirkpatrick
Joan E. Kirkpatrick
Christian K. Keesee
Eleanor Maurer
John L. Belt

Fiscal Trustees

The Fiscal Committee of the Community Foundation is composed of officers of the four bank and trust companies which manage the investment assets. An Investment Committee of the Board of Trustees monitors the performance of the Fiscal Committee.

John Sloan
Bank of Oklahoma

Clarence Bagwell
First Interstate Bank

Don Balaban
Liberty National Bank

C. Randolph Everest
Trust Company of Oklahoma

Name Funds

Over three hundred individuals, foundations and companies have established Name Funds at the Oklahoma City Community Foundation. These funds represent the source of the Community Foundation's endowment assets. The earnings from each fund are used to support the community activities specified by the donors to the fund. The contributions made to community organizations are identified by the Name Fund source of the earnings. Without Name Funds, there would be no Oklahoma City Community Foundation.

AHB FUND

(1979) \$5,340. Supports Oklahoma Arts Institute, Arts Council of Oklahoma City and Prairie Dance Theatre.

JACK ABERNATHY

(1973) \$384,316. Supports the Fund for Oklahoma City, Omnplex and other agencies. Mr. Abernathy is a former trustee of the Community Foundation.

MARLE AND KATHLEEN ABSHERE

(1979) \$43,479. Supports the Fund for Oklahoma City, Mercy Health Center, and World Neighbors.

DR. AND MRS. THOMAS E. ACERS

(1985) \$1,068. Supports the Dean A. McGee Eye Institute.

JASPAR D. ACKERMAN

(1970) \$270,508. Supports the National Cowboy Hall of Fame. Mr. Ackerman was a Colorado Springs banker who left a bequest in his will for this fund.

TOM AND MARYE KATE ALDRIDGE

(1979) \$5,340. Supports Goodwill Industries.

MARY ALEXANDER

(1974) \$1,240. Supports the Fund for Oklahoma City.

O. JUNE ALLEN TRUST

(1987) \$384,172. Supports the Fund for Oklahoma City. This fund was established through a bequest in Mrs. Allen's will.

OKLAHOMA ALLERGY CLINIC FOUNDATION

(1970) \$2,773. Supports allergy research. The doctors at the Oklahoma Allergy Clinic Foundation started this fund to support research at the OU Health Sciences Center.

FISHER AND JEWELL T. AMES

(1974) \$2,480. Supports the Fund for Oklahoma City.

AN-SON CORPORATION

(1974) \$5,341. Supports World Neighbors.

BOB AND NANCY ANTHONY

(1985) \$71,233. Supports Casady School, Pathways, Rainbow Fleet, and other donor-advised contributions. Mrs. Anthony joined the Community Foundation as Director in 1985.

CHRISTINE HOLLAND ANTHONY

(1985) \$9,613. Supports World Neighbors, Oklahoma City University and other agencies.

GUY M. ANTHONY, JR.

(1985) \$20,213. Supports World Neighbors and the Oklahoma City Food Bank.

ARMED FORCES — JOHN E. KIRKPATRICK FUND

(1987) \$555,398. Supports the three national service academies and other armed services activities in Oklahoma City. Mr. Kirkpatrick served as an admiral in the U.S. Navy.

ORA ASHWELL

(1978) \$25,956. Supports St. Joseph's Orphanage, Pathways and Sunbeam Home. The fund was left by Mrs. Ashwell in her estate to support indigent children.

MR. AND MRS. GENE AUTRY

(1988) \$5,340. Supports the National Cowboy Hall of Fame.

BACHELORS' CLUB OF OKLAHOMA CITY

(1977) \$3,590. Supports the Dean A. McGee Eye Institute. The fund was started by the club through one of its fund-raising events.

NAME FUND

DR. E. E. KIRKPATRICK

Dr. Elmer Kirkpatrick was a pioneer dentist who moved to Oklahoma City in 1893, the same year he received his degree from Lake Forest University in Chicago.

At the time he began his practice, it was a serious problem to get the profession organized and eliminate the many "quack" doctors and dentists who were practicing on the frontier. Kirkpatrick was a leader in the new Oklahoma Territorial Dental Society and the Oklahoma Dental Examining Board, which set standards of ethics and dental standards.

In April 1900, Kirkpatrick placed a notice in *The Oklahoman* that helps explain how things got done in those days: "The Board of Dental Examiners will meet at Oklahoma City next week . . . to examine applicants for license to practice dentistry. Each applicant will be required to make one or more gold fillings, one gold crown and one set of teeth. Those wishing dental work can have it done then free of charge."

Kirkpatrick devoted much time to assist charity patients, and continually sought ways to advance dental techniques. He organized the first dental supply house in the territory. Distribution must have posed as formidable a challenge as having the right material in stock. In 1894 he received a letter asking for certain supplies to be delivered "in the spring, after the rivers and roads dried up."

Earnings from Dr. Kirkpatrick's name fund, established by John and Eleanor Kirkpatrick, will benefit the Saint Anthony Dental Clinic, shown on the facing page.



H.E. BAILEY MEMORIAL
(1977) \$2,408. Supports the Fund for Oklahoma City.

C. WAYNE BARBOUR MEMORIAL
(1974) \$113,215. Supports the Dean A. McGee Eye Institute and the American Cancer Society. The memorial to Mr. Barbour was started by his widow and two sons.

DAVID W. AND CATHERINE MAE BARDWELL
(1982) \$30,974. Supports the Baptist Retirement Home and Oklahoma Baptist University.

BASS FOUNDATION
(1988) \$5,340. Supports the National Cowboy Hall of Fame.

JOHN M. BEARD
(1984) \$10,681. Supports Leadership Oklahoma City.

ETHEL C. BENEDICT
(1986) \$59,684. Supports the Fund for Oklahoma City. This fund was started with a bequest from the estate of Mrs. Benedict, an Oklahoma City businesswoman.

LOYD BENEFIELD
(1970) \$3,204. Supports the Dean A. McGee Eye Institute.

DAVID BLAIR BENHAM
(1974) \$5,476. Supports Oklahoma City University and donor-advised contributions.

WEBSTER LANCE BENHAM MEMORIAL
(1979) \$61,948. Supports the Benham Professorship at Oklahoma City University and was established by the Benham Group in memory of their founder who taught engineering at OCU.

C.M. AND J.F. BENNETT
(1988) \$5,340. Supports the National Cowboy Hall of Fame.

JULIE C. BENNETT
(1977) \$1,068. Supports special education activities at Casady School.

PHILIP R. BENNETT MEMORIAL
(1977) \$1,068. Supports Celebrations! Educational Services. The board of Celebrations established the fund in memory of Mr. Bennett.

MR. AND MRS. ROBERT S. BOWERS
(1981) \$82,563. Supports the Fund for Oklahoma City and donor-advised contributions.

DR. AND MRS. GEORGE S. BOZALIS
(1976) \$8,747. Supports Allergy Research at the OU Health Sciences Center. The fund is the beneficiary of a charitable remainder trust established by the Dr. and Mrs. Bozalis.

HOWARD J. BOZARTH
(1970) \$1,364. Supports the Fund for Oklahoma City. Mr. Bozarth was a former fiscal trustee of the Community Foundation.

BARTH W. AND LINDA BRACKEN
(1980) \$23,517. Supports various donor-advised contributions. Mr. and Mrs. Bracken established this fund with a contribution of a working interest in an Oklahoma oil well.

V. ROSS BROWN
(1979) \$5,340. Supports orchestra and symphonic music in Oklahoma City.

JOHN R. AND BETTY BROWNE
(1976) \$33,211. Supports the Fund for Oklahoma City, World Neighbors, and Deaconess Hospital. Mr. Browne is a former fiscal trustee of the Community Foundation.



Dr. Mary Casey, Director of the Kirkpatrick Dental Clinic at St. Anthony Hospital, supervises treatment being provided by dental student Dr. Bong Suh. In addition to traditional dental training, St. Anthony residents work in reconstructive surgery, in treatment of facial trauma cases in the emergency department, and in other areas of the hospital.

MAIMEE LEE BROWNE
(1973) \$26,790. Supports the Fund for Oklahoma City.

VIRGIL BROWNE
(1976) \$32,095. Supports the Fund for Oklahoma City. Started by Mr. Browne, the fund was increased by numerous memorial contributions at his death in 1978 at age 101.

MELVA BYER
(1980) \$2,794. Supports the Erna Krouch Preschool. Mrs. Byer was the director and teacher at the school and the fund was established in her memory by parents and friends.

JEANNE C. AND HUGH V. BYLER, JR.
(1987) \$1.00. Supports a scholarship fund at Lyric Theatre. The original gift to the fund was a parcel of real estate.

CAIN'S COFFEE COMPANY
(1990) \$5,000. The fund was established to honor the contributions of John and Eleanor Kirkpatrick to the Oklahoma City Community.

HORACE K. AND AILEEN CALVERT
(1977) \$4,272. Supports Casady School.

C.B. CAMERON MEMORIAL
(1979) \$24,032. Supports Westminster School and was established by the school in memory of Mr. Cameron.

LOGAN W. CARY MEMORIAL
(1977) \$16,506. Supports several organizations in the community including the Cary Fund at Oklahoma City University. The fund was started by Launa Cary and Logan Cary, Jr.

VIRGINIA AND SAM CERNY
(1983) \$5,340. Supports Big Brothers and Big Sisters of Greater Oklahoma City.

ROY W. AND PAT CHANDLER
(1979) \$2,185. Supports Oklahoma Goodwill Industries.

YVONNE CHOUTEAU
(1976) \$5,527. Supports Ballet Oklahoma. Ms. Choteau was a nationally-known ballerina and teacher in Oklahoma City. The fund was established by Mr. and Mrs. Bryan Arnn.

MARY MILES CLANTON
(1974) \$2,136. Supports the Allied Arts Foundation.

DANA ANTHONY CLASBY
(1981) \$17,356.
Supports the American Cancer Society and the American Diabetes Association.

WILLIAM B. AND HELEN P. CLEARY
(1979) \$9,459. Supports the Oklahoma City Art Museum and Youth Services of Oklahoma County.

T. ROSS CLEMENT
(1988) \$5,340. Supports the National Cowboy Hall of Fame.

MR. AND MRS. R.J. CLEMENTS
(1978) \$5,371. Supports the YMCA.

MR. AND MRS. RICHARD H. CLEMENTS
(1978) \$5,356. Supports the Oklahoma City Art Museum.

RALPH CLINTON MEMORIAL
(1985) \$10,147.
Supports a scholarship given by the Sales Marketing Executives Association.

MISS MARY M. CLOCK
(1978) \$2,019. Supports Neighbor for Neighbor.

COLE & REED
(1983) \$48,677.
Supports a number of organizations. The fund has been supported by the accountings firms of Billups, Arnn & Macho and Ernst & Whinny as well as Cole and Reed.

JACK T. AND GILLETTE CONN FUND
(1970) \$1,965. Supports the Fund for Oklahoma City.

CONSOLIDATED DEVELOPMENT CORPORATION
(1983) \$6,020. Supports donor-advised contributions.

WILLIAM ROWE AND GRETCHEN S. COOK
(1978) \$5,340. Supports Presbyterian Urban Mission. Mrs. Cook established the fund in memory of her husband, a former city councilman.

FERN K. AND R. BOZE COOPER
(1977) \$5,367. Supports the Allied Arts Foundation.

TULLOS O. AND MARGARET L. COSTON
(1976) \$6,470. Supports the Dean A. McGee Eye Institute. Dr. Coston was chairman of the OU Medical College Department of Ophthalmology.

COUNCIL FOR 1989
(1976) \$12,672.
Established to fund projects that advance concepts in excellence in urban living.

BESS M. CRANE
(1979) \$16,618.
Supports the Fund for Oklahoma City.

PEARL H. CRICKARD
(1973) \$1,860. Supports the Fund for Oklahoma City.

ROBERT D. AND EWING HARDY CROWE
(1974) \$1,111. Supports World Neighbors.

DOUGLAS R. AND PEGGY J. CUMMINGS
(1974) \$81,219.
Supports donor-advised contributions.

JACK D. DAHLGREN
(1975) \$5,340. Supports World Neighbors.

DANA CORPORATION
(1988) \$53,087.
Supports the Dana Corporation Scholarship Fund.

SAM DAUBE
(1988) \$5,340. Supports the National Cowboy Hall of Fame.

OLIVE H. DAUBE
(1988) \$5,340. Supports the National Cowboy Hall of Fame.

JUDGE FRED DAUGHERTY
(1984) \$5,340. Supports the 45th Infantry Museum. Judge Daugherty was a former commander of the 45th Infantry Division.

O.K. DETRICK FOUNDATION, INC.
(1978) \$4,059. Supports scholarships for dancers at Oklahoma City University.

MARION BRISCOE DEVORE
(1976) \$1,121. Supports the Allied Arts Foundation.

DONALD AND ELIZABETH DICKINSON
(1988) \$5,340. Supports the National Cowboy Hall of Fame.



GRANTS

PERFORMING ARTS

This shot of Laura Flagg-Pitts and Matthew Sharp was taken during Ballet Oklahoma's performance of "Valentine Suites," a ballet about soldier homecomings after World War II. The production was choreographed by Bryan Pitts to the music of Glenn Miller and Benny Goodman. The Oklahoma City Community Foundation made a grant of \$10,000 to help underwrite costs of sets and costumes for this production. Another grant of \$10,000 was made to the Oklahoma Philharmonic to present "Oklahoma Trilogy." Cimarron Circuit Opera Company received a grant of \$6,000 to support its performance of "Snow White" at four Oklahoma City area schools.

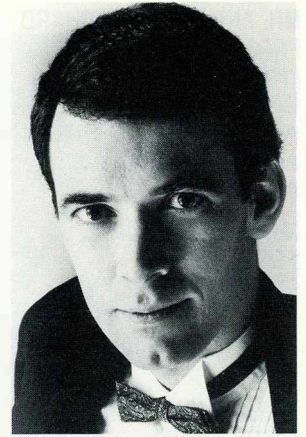
DESIGNATED FUND

WILSON VOICE AWARDS

The first recipients of the Wilson Voice Awards were named in the spring of 1990, thanks to a bequest from the Florence Ogden Wilson estate. The \$500 awards are given to a male and female contestant in the Stewart Awards, a biennial national operatic voice competition sponsored by the Oklahoma City Orchestra league and The Oklahoma City Philharmonic.

For the first round of competition, each contestant submitted a videotape with selections from a required repertoire. Finalists were chosen from the tapes to perform in the final auditions, which were open to the public. The awards jury is composed of internationally recognized teachers and practicing artists in the operatic field.

The Stewart Awards were established in 1984. This year, 67 entries were received from 22 states. The Wilson Awards are given to contestants who do not place in the final auditions but whose careers in opera are judged most promising. In 1990, Michele Franco, a soprano from New York City, and Jonathon Sills, a baritone from Merion, Pennsylvania won the Wilson Awards.



THE DOLESE FOUNDATION
(1988) \$5,340. Supports the National Cowboy Hall of Fame.

MR. AND MRS. STANLEY DRAPER
(1975) \$1,240. Supports the Fund for Oklahoma City. Mr. Draper was a longtime executive of the Oklahoma City Chamber of Commerce.

LUTHER T. DULANEY
(1971) \$21,468. Supports research in health care. Mr. Dulaney was a trustee of the Community Foundation.

JACK AND JUNE DURLAND
(1977) \$9,043. Supports the YMCA.

JACK R. DURLAND, JR.
(1986) \$5,625. Supports Kirkpatrick Center.

JAMES L. AND PAULINE A. EARLY
(1979) \$21,361. Supports Goodwill Industries and the Salvation Army.

T. WINSTON EASON MEMORIAL
(1980) \$34,210. Supports Speck Homes and the Fund for Oklahoma City.

THOMAS THADEUS AND ANNA L. EASON
(1981) \$49,657. Supports Speck Homes and the Fund for Oklahoma City.

B.D. EDDIE
(1970) \$25,184. Supports the Fund for Oklahoma City and the Oklahoma Zoological Society. Mr. Eddie was a trustee of the Community Foundation.

MR. AND MRS. BEVERLY C. D. EDWARDS
(1979) \$2,136. Supports the National Society of Colonial Dames.

WILLIAM T. EGOLF
(1980) \$2,136. Supports the Oklahoma City Art Center.

GRACE F. ELDRIDGE MEMORIAL
(1982) \$22,430. Supports medical research in arthritis and the Dean A. McGee Eye Institute. The fund was established by her daughter, Mrs. Roberta Eldridge Miller.

R.L. ELDRIDGE MEMORIAL
(1976) \$16,822. Supports medical research and the National Cowboy Hall of Fame. The fund was established by his daughter, Mrs. Roberta Eldridge Miller.

LT. W. H. ELDRIDGE MEMORIAL
(1982) \$2,083. Supports the Oklahoma Air Space Museum. The fund was established by Mrs. Roberta Eldridge Miller in memory of her brother who was killed during World War II.

DON AND MARGARET ELLISON
(1977) \$2,090. Supports the Fund for Oklahoma City. Mr. Ellison was the first Secretary and General Counsel of the Community Foundation and framed its original documents.

EPISCOPAL DIOCESE OF OKLAHOMA
(1975) \$1,602. Supports Neighbor for Neighbor.

HELEN V. ERDBERG
(1987) \$2,480. Supports the Fund for Oklahoma City. Mr. A.D. Erdberg established this fund in memory of his wife with the gift of her vintage automobile.

MRS. BRONETA EVANS
(1986) \$5,340. Supports the Oklahoma Air Space Museum.

HARVEY P. AND RUTH J. EVEREST
(1973) \$28,847. Supports the Fund for Oklahoma City and Sunbeam Home. Mr. Everest was a trustee of the Community Foundation.

MR. AND MRS. JEAN I. EVEREST
(1970) \$62,325. Supports Casady School, Oklahoma Zoological Society, and donor-advised contributions. Mr. Everest was a trustee and president of the Community Foundation.

MARK R. EVERETT MEMORIAL
(1983) \$5,340. Supports the library at the University of Oklahoma. The fund was established by his son, Dr. Mark Everett.

JAMES D. AND MARGARET E. FELLERS
(1986) \$20,912. Supports donor-advised contributions, Lyric Theatre and Oklahoma Christian College.

FIRST BAPTIST CHURCH OF OKLAHOMA CITY
(1979) \$4,272. Supports Oklahoma Baptist University.

VOSE FOUNDATION
(1981) \$5,340. Supports the Baptist Medical Center.

RICHARD AND ADELINE FLEISCHAKER
(1979) \$102,056. Supports the Daily Living Center, Jewish Federation, and donor-advised contributions.

MR. AND MRS. C. RICHARD FORD
(1974) \$8,545. Supports the Boy Scouts of America, Casady School, and the Oklahoma City Art Museum.

MR. AND MRS. CARL S. FORD
(1979) \$47,930. Supports nineteen agencies throughout the city.

VIRGINIA AND LON FOSTER
(1989) \$9,871. Supports donor-advised contributions.

MR. AND MRS. BILLY E. FOWLER
(1988) \$5,340. Supports the National Cowboy Hall of Fame.

EDWARD K. GAYLORD
(1970) \$692,359. Supports the Scholarship Endowment. The fund was started by Mr. Gaylord and was increased substantially by a bequest in his estate.

GENERAL INDIVIDUAL
(1969) \$259,384. Supports a large number of organizations. The fund contains those contributions from donors who have not specified another Name Fund.

NANCY AND PAT GILLESPIE
(1986) \$13,346. Supports the Salvation Army.

ROGER GIVENS TRUST
(1980) \$211,045. Supports the Fund for Oklahoma City. Mr. Givens was a real estate developer who contributed to this fund through a charitable remainder trust.

SYLVAN N. GOLDMAN
(1973) \$150,067. Supports B'Nai Brith Hillel Foundation and Fund for Oklahoma City. Mr. Goldman was a trustee of the Community Foundation.

GOLDMAN-KIRKPATRICK
(1976) \$21,361. Supports a special Christmas event of the Oklahoma Zoological Society. The fund was started by John E. Kirkpatrick and Sylvan Goldman.

E.L. GOSSELIN
(1970) \$1,240. Supports the Fund for Oklahoma City.

GOSSET/BOYER
(1979) \$24,299. Supports the Boy Scouts of America.

EARL Q. AND LUCILE R. GRAY
(1978) \$67,481. Supports research in Parkinson's Disease and arthritis, and Big Brothers/Big Sisters. The fund was started by their daughter, Mrs. Nancy Cheek, and added to by other friends through memorials.

W. DOW GUMERSON MEMORIAL
(1978) \$5,228. Supports the Overholser Mansion. Mr. Gumerson was an architect and instrumental in the initial efforts to preserve the Overholser Mansion.

LAWRENCE R. HAGY
(1988) \$5,340. Supports the National Cowboy Hall of Fame.

PATTIE MULLINS HALL MEMORIAL
(1981) \$13,378. Supports medical research in diabetes and heart disease and World Neighbors. The fund was established by Mrs. Hall's husband, Brooks Hall, and other friends.

JAMES G. HARLOW, JR.
(1970) \$1,234. Supports donor-advised contributions.

F. DAIL HARPER
(1979) \$1,068. Supports Casady School.

RICHARD D. HARRISON
(1979) \$10,112. Supports the Fund for Oklahoma City. Mr. Harrison is a former trustee of the Community Foundation.

D. JEAN AND DANIEL E. HAYES
(1982) \$15,457. Supports the Visiting Nurses Association.

HEFNER FAMILY FUND
(1979) \$26,702. Supports the Oklahoma Heritage Association. The fund was started by Mr. and Mrs. Robert Hefner, Jr.

MR. & MRS. H.A. HEWETT, JR.
(1979) \$5,340. Supports Oklahoma Goodwill Industries.

WILLIAM J. AND HELEN HILSEWECK
(1978) \$1,068. Supports World Neighbors.

H.C. HITCH, JR.
(1988) \$5,340. Supports the National Cowboy Hall of Fame.



NAME FUND

GEORGE RECORDS

As George Records neared thirty years of service with the Midland Group, employees of the company began to plan how to celebrate his anniversary. On his twentieth, they had raised money and bought him a gift. This time, they decided to do something that he might appreciate even more, by raising money to donate to one of his favorite charities. The charity is the United Way of Greater Oklahoma City, a funding program which supports more than 40 social service programs.

For eight months, they raised money when Records wasn't looking. Raffle tickets were sold for a home-made afghan and a dinner party was hosted and served by officers of the company. A carwash and a chili and taco lunch brought in more contributions. Cover for the surreptitious fundraisers almost came to an end one day when Records walked into the office of an employee who was counting money collected from selling carnations.

Thanks to Records' thirty years of service and his employees' efforts, the name fund roster of The Oklahoma City Community Foundation is one name stronger, increasing the funds designated for the United Way by \$5,000.

HERSCHEL AND FRANCES HOBBS

(1982) \$10,885. Supports the Hobbs Lectureship at Oklahoma Baptist University. Dr. Hobbs is a former president of the O.B.U. Board of Trustees.

DAN HOGAN, III

(1979) \$14,611. Supports Casady School, Fund for Oklahoma City, and Oklahoma City University. Mr. Hogan is a trustee and former president of the Community Foundation.

ROBERT E. HOGSETT

(1988) \$5,340. Supports the National Cowboy Hall of Fame. The fund was established with a gift from his estate.

MR. AND MRS. ROBERT M HOOVER, JR.

(1979) \$65,730. Supports nineteen agencies throughout the community.

G. ED HUDGINS FAMILY FUND

(1989) \$150,636. Supports donor-advised contributions and a scholarship for architectural students at Oklahoma State University.

W.W. AND NONA JEAN HULSEY

(1970) \$3,834. Supports the Fund for Oklahoma City, Oklahoma City Art Museum, and Ballet Oklahoma.

WALTER HUNZICKER

(1979) \$1,903. Supports the Oklahoma City Art Museum and Omniplex.

ROBERT D. HUTCHINSON

(1985) \$18,603. Supports the Fund for Oklahoma City. The fund was established through a bequest in Mr. Hutchinson's estate.

INTERNATIONAL HEALTH AND DEVELOPMENT FUND

(1986) \$5,340. Supports donor-advised contributions.

MRS. GUY JAMES

(1979) \$26,703. Supports Oklahoma Baptist University.

JEROME'S

(1975) \$1,240. Supports the Fund for Oklahoma City. The fund was established by Jerome Bernstein, founder of an Oklahoma City ladies clothing store.

MARY POTTER JOHNS

(1979) \$1,068. Supports the National Society of Colonial Dames.

BRUCE AND FRANCES JOHNSON

(1973) \$6,322. Supports Baptist Medical Center and World Neighbors.

WILLIAM M. AND JANET S. JOHNSON

(1987) \$1,453,126. Supports the William and Janet Johnson Scholarship Fund.

WILLARD JOHNSTON FOUNDATION

(1979) \$8,796. Supports Casady School and the Fund for Oklahoma City.

FRED AND MARY EDDY JONES

(1976) \$53,404. Supports Oklahoma City University. The fund was established by Mrs. Jones to thank the Oklahoma City community by supporting higher education.

EMMA JORDAN MEMORIAL

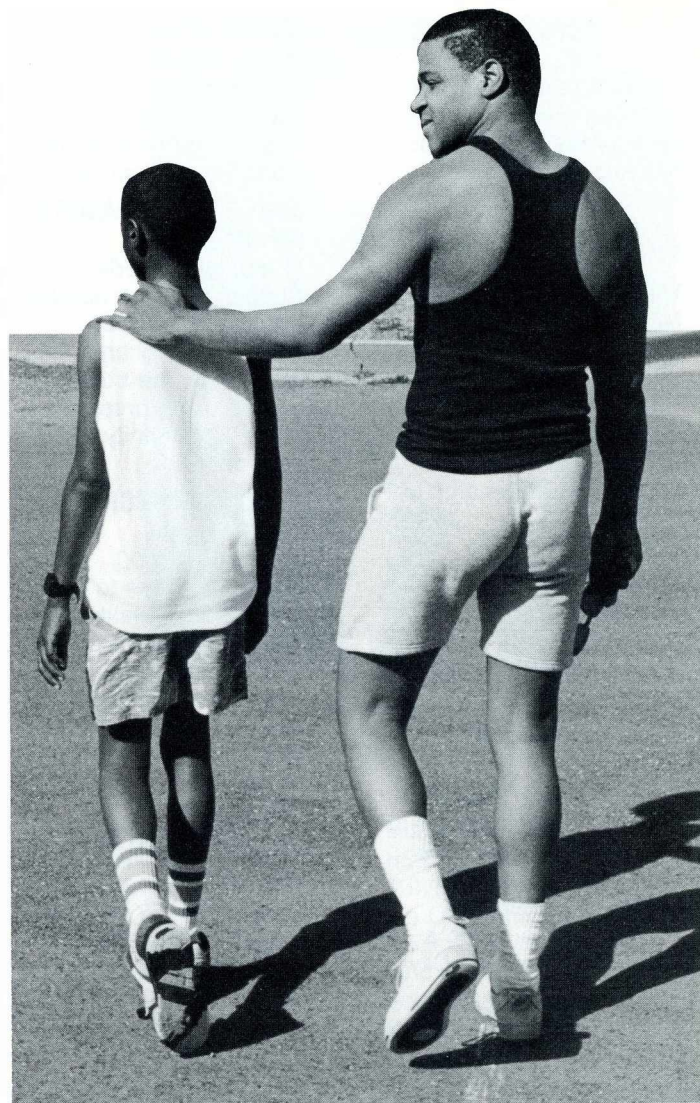
(1979) \$6,670. Supports a scholarship for women at St. Gregory's College. The fund was established by the Altrusa Club.

HAROLD I. JOSEY

(1972) \$5,148. Supports the Fund for Oklahoma City.

THE JOULLIAN FAMILY

(1972) \$137,084. Supports the Boy Scouts of America and symphonic music in Oklahoma City. Mr. E.C. Joullian, III is a former trustee and president of the Community Foundation.



An arm around a shoulder is a simple but eloquent way to show the one-on-one support provided by Big Brothers/Big Sisters to children of single-parent families.

CHRISTIAN K. KEESEE

(1974) \$126,420. Supports the Fund for Oklahoma City and Heritage Hall.

DONALD S. KENNEDY

(1970) \$2,496. Supports the Fund for Oklahoma City.

KERR FOUNDATION

(1985) \$220,701. The current Community Foundation offices at 115 Park Avenue were donated by the Kerr Foundation before it divided into the Kerr group of foundations in 1985.

DAVID KENWORTHY KERR MEMORIAL

(1980) \$108,141. Supports donor-advised contributions and the National Cowboy Hall of Fame.

KERR-MCGEE CORPORATION

(1971) \$61,877. Supports the Fund for Oklahoma City. The original gift was a tract of land near the Oklahoma City Zoo which is now part of Kirkpatrick Center.

MR. AND MRS. JOHN KILPATRICK, JR
(1975) \$3,047. Supports ten agencies in the Oklahoma City area. Mr. Kilpatrick is a former trustee and president of the Community Foundation.

WILLIAM M. KILPATRICK MEMORIAL
(1975) \$4,150. Supports the Fund for Oklahoma City. The fund was started by Mr. Kilpatrick and added to by family and friends at the time of his death.

KIRKPATRICK FOUNDATION
(1985) \$1,370,121. Supports a large number of Oklahoma City area organizations.

DR. E. E. KIRKPATRICK MEMORIAL
(1989) \$5,044. Supports St. Anthony Hospital Dental Clinic. The fund was established by Mr. John E. Kirkpatrick in memory of his father, a dentist in Oklahoma City.

JOHN BOLE KIRKPATRICK
(1976) \$29,491. Supports the Fund for Oklahoma City and the O.S.U. Technical Branch Horticulture program.

JOHN E. AND ELEANOR B. KIRKPATRICK
(1969) \$8,970,564. Supports a large number of agencies in the Oklahoma City area. Mr. Kirkpatrick is a trustee and founding president of the Community Foundation.

FLORIDA M. KNIGHT TRUST
(1975) \$107,000. Supports grants to handicapped children. Mrs. Knight left property in downtown Oklahoma City to support this trust. Grants are made by the Community Foundation according to her instructions.

MR. AND MRS. MAX L. KNOTTS
(1984) \$5,278. Supports the Omniplex and Oklahoma City University.

EMBASSY OF KOREA
(1975) \$29,130. Supports Korean activities at the Kirkpatrick Center. Contributions to the fund have come from gifts from the Ambassador of Korea in honor of John Kirkpatrick.

MR. AND MRS. FRANK J. KUNC FUND
(1976) \$4,341. Supports the Fund for Oklahoma City.

PERRY A. AND MONA S. LAMBIRD
(1977) \$2,996. Supports Ballet Oklahoma.

ADA V. LANCE MEMORIAL
(1979) \$1,068. Supports the Heart of Oklahoma Council of Camp Fire.

HOBART F. LANDRETH MEMORIAL
(1973) \$2,528. Supports research at the Oklahoma City Zoo. Dr. Landreth was research director at the zoo and the fund was established as a memorial by friends and colleagues.

DR. WANN AND CLARA LANGSTON
(1978) \$116,517. Supports the medical library at Baptist Medical Center and two special scholarship funds.

LEDBETTER INSURANCE AND RISK
(1979) \$1,068. Supports Oklahoma Goodwill Industries.

STANLEY AND JERRY LEE
(1980) \$43,276. Supports the YMCA and the Fund for Oklahoma City.

ROBERT E. AND JANE LEE
(1977) \$4,005. Supports Mercy Health Center.

FRANK LEU
(1988) \$5,340. Supports the National Cowboy Hall of Fame.

HARRISON AND HELEN S. LEVY
(1980) \$1,294. Supports the Fund for Oklahoma City.

ANN SIMMONS ALSPAUGH
(1983) \$10,147. Supports Ballet Oklahoma and Oklahoma City University.

LUCILLE E. LITTLE
(1975) \$9,079. Supports the Hobbs Lectureship at Oklahoma Baptist University.

JACK AND GLADYS LONDON
(1987) \$5,340. Supports the Kerr-McGee Swim Club.

JAMES P. AND ROSELLE MACKELLAR
(1987) \$5,340. Supports the Kerr-McGee Swim Club.

L.A. AND PANSY E. MACKLANBURG
(1970) \$121,258. Supports the Fund for Oklahoma City and Oklahoma Christian College.

MARY MACKLANBURG
(1976) \$15,502. Supports the Fund for Oklahoma City.

ROBERT A. MACKLANBURG, JR.
(1970) \$1,364. Supports the Fund for Oklahoma City.

ANNE W. MARION
(1988) \$10,681. Supports the National Cowboy Hall of Fame.

HARDIN W. AND GERTRUDE C. MASTERS
(1975) \$2,728. Supports the Fund for Oklahoma City.

WATT R. MATTHEWS
(1988) \$10,681. Supports the National Cowboy Hall of Fame.

DARWIN AND ELEANOR MAURER
(1973) \$20,657. Supports Executive Women International and the Fund for Oklahoma City. Mrs. Maurer is the longtime treasurer of the Community Foundation.



This picture of the Round Barn of Arcadia was taken shortly after it was built in 1898.

CIVIC GRANT

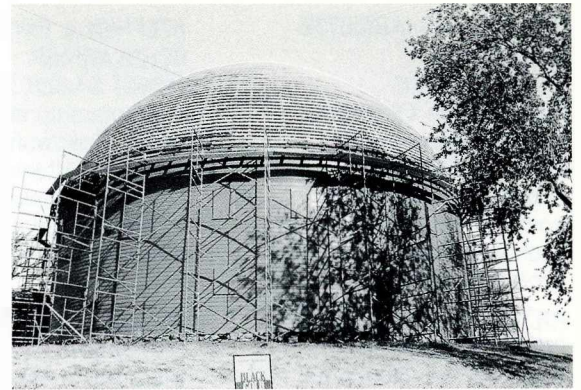
THE ROUND BARN OF ARCADIA

In 1988 the roof of the Round Barn of Arcadia, one of the most famous landmarks on Route 66, collapsed. When the barn was built in 1898, the first two rafters had to be tied together at the top of the 43-foot high domed roof by its builder, Mr. William Harrison Odor. No bracing in the barn was needed because of the way Odor assembled the native Oklahoma Burr Oak timbers used in its construction.

The barn was for horses and hay. It has been speculated that its round shape was intended to encourage tornadoes to go around and not through it. The acoustics in the loft were said to be as good as in the Mormon Temple in Salt Lake City — when new, “one could stand near the wall and hear a pin hit the floor on the other side of the barn, 60 feet away.” At least one dance was held there after the barn was completed.

Around 1960, a new owner cut a 12-foot doorway for unloading hay. With the continuity of its supporting walls interrupted, the barn started to lean. In June, 1988, three months after the Arcadia Historical Preservation Society began trying to preserve the barn, its decaying roof “just kind of sighed and fell in — like a soufflé,” reported *The Oklahoman*.

During the first year after the barn’s collapse, local volunteers reworked the stones around its foundation. A grant of \$7,000 from the Oklahoma City Community Foundation helped close in the large doorway and acquire materials needed to brace the walls. When the roof is completed, the Round Barn of Arcadia will resume its place as a living history monument to rural practicality and inventiveness.



After suffering a collapsed roof in 1988 the Round Barn stands straight again, with a new roof to keep out winter storms.

GENE E. MCCOLLUM, JR. MEMORIAL

(1980) \$4,928. Supports the Burn Unit at Baptist Medical Center. Mr. and Mrs. McCollum started this fund in memory of their son.

M.G. MCCOOL MEMORIAL

(1981) \$200,796. Supports Speck Homes. The fund was established by his wife through a bequest.

JAMES W. MCDONALD
(1988) \$5,340. Supports the National Cowboy Hall of Fame.

MR. AND MRS. DEAN A. MCGEE

(1973) \$23,339. Supports the Fund for Oklahoma City and O.C.U. Mr. McGee was a trustee of the Community Foundation.

WILLIAM F. AND SALLY MCNUTT

(1976) \$108,453. Supports eight social service organizations.

DR. OSCAR H. MILLER MEMORIAL

(1982) \$7,744. Supports research in heart disease. The fund was established by his wife, Mrs. Roberta Eldridge Miller.

ROBERTA M. ELDRIDGE MILLER

(1982) \$18,371. Supports Oklahoma City University, Neighbor for Neighbor, Oklahoma City Beautiful, Salvation Army, and Oklahoma Goodwill Industries.

LLOYD MINTER

(1979) \$40,580. Supports Oklahoma Baptist University.

MONTAL INVESTMENT COMPANY

(1984) \$6,020. Supports donor-advised contributions.

DONALENE MOODY

(1983) \$3,376. Supports the Fund for Oklahoma City and the YMCA.

HANK MORAN & ASSOCIATES

(1979) \$1,068. Supports Oklahoma Goodwill Industries.

MR. AND MRS. WILLIAM B. MORRIS

(1975) \$6,201. Supports the Fund for Oklahoma City.

SISTER ANTOINETTE MORRY MEMORIAL

(1987) \$21,519. Supports Villa Teresa School. The fund was established by the Camelite Sisters in honor of one of their members.

NORMAN A. AND EMILIE MORSE

(1972) \$69,710. Supports the Fund for Oklahoma City and YMCA activities.

JERRY AND VETTE MORTON

(1976) \$5,340. Supports the Allied Arts Foundation.

HELEN EASON MURPHY MEMORIAL

(1976) \$38,590. Supports the Fund for Oklahoma City and Speck Homes.

SAM NOBLE

(1988) \$5,340. Supports the National Cowboy Hall of Fame.

DELLORA A. AND LESTER

(1988) \$5,340. Supports the National Cowboy Hall of Fame.

CLARK AND IMA NYE

(1979) \$3,509. Supports the National Society of Colonial Dames.

OKLAHOMA CITY NAVY

(1988) \$32,042. Supports the U.S.S. Oklahoma City. The fund was established with contributions made at the time of the commissioning of this nuclear submarine.

OKLAHOMA COUNTY BAR ASSOCIATION

(1986) \$4,059. Supports the Myriad Gardens. The fund was started by the Bar Association from the proceeds of a fund-raising event for the Myriad Gardens.

OKLAHOMA CITY OPERA ASSOCIATION

(1970) \$35,265. Supports opera activities in Oklahoma City. The fund received assets of the opera organization when its activities ceased. Grants are made by the Community Foundation to other opera activities.

ROBERT AND HARRIETTE ORBACH

(1982) \$18,216. Supports the Oklahoma City Art Museum. Mr. and Mrs. Orbach donated the proceeds from the sale of a cookbook which they wrote and printed.

P.R.W.

(1986) \$10,681. Supports the Oklahoma County Historical Society.

CLARENCE E. PAGE

(1987) \$54,472. Supports the Oklahoma Air and Space Museum. Mr. Page was the founder of the museum and an early day Oklahoma aviator.

CLARENCE AND POLLY PAINE

(1974) \$6,201. Supports the Fund for Oklahoma City.

WAYNE A. PARKER

(1970) \$1,271. Supports the Fund for Oklahoma City.

JEWEL AND GEORGE PARLEIR MEMORIAL

(1979) \$1,614. Supports Sunbeam Family Services. The fund was established by the Board of Sunbeam to honor Mr. Parleir who had worked there.

NELL PATTERSON

(1975) \$3,376. Supports the Fund for Oklahoma City, Oklahoma City University, and the National Cowboy Hall of Fame.

DOROTHY A. PAUL

(1977) \$12,402. Supports the Fund for Oklahoma City.

D.D. AND NONA S. PAYNE

(1978) \$2,777. Supports the National Cowboy Hall of Fame. Mrs. Payne established this fund in memory of her husband, a Pampa, Texas rancher.

STEPHEN B. PAYNE SCHOLARSHIP

(1982) \$4,828. Supports a scholarship awarded by the Fellowship of Christian Athletes. The fund was established by William T. Payne and others in memory of his son.

WILLIAM T. PAYNE

(1976) \$3,632,202. Supports a number of local organizations and donor-advised contributions. Mr. Payne, a pioneer oilman, was an early supporter of the Community Foundation.

OLGA PELLOW

(1988) \$5,340. Supports the National Cowboy Hall of Fame.

F.M. AND THELMA PETREE

(1977) \$676,518. Supports Oklahoma City University. Mr. Petree was a trustee of the Community Foundation and chairman of the executive committee of O.C.U. for many years.

MARVIN AND RUBY PETTY

(1975) \$1,204. Supports donor-advised contributions.

PILOT CLUB OF NORTHWEST OKLAHOMA CITY

(1976) \$5,177. Supports a scholarship at the Oklahoma Health Sciences Center. The Pilot Club is a national women's service organization.

POINTE NORTH DEVELOPMENT CORPORATION

(1984) \$8,428. Supports donor-advised contributions.

DR. AND MRS. IRA POLLOCK

(1977) \$1,709. Supports Mercy Health Center.

RAY AND PAT POTTS

(1976) \$97,399. Supports the Central Branch-YMCA and the Oklahoma City Public Schools Foundation. Mrs. Potts is a former executive director of the Community Foundation.

CHESLEY PRUET

(1988) \$5,340. Supports the National Cowboy Hall of Fame.

QUAIL CREEK BANK

(1990) \$0. Supports the Fund for Oklahoma City.

FREDERICK AND JAYNE QUELLMALZ

(1982) \$16,014. Supports the International Photography Hall of Fame and Museum. Mr. Quellmalz, of Des Plaines, Illinois, played an important role in locating the photography museum in Oklahoma.

J.L. RAINEY

(1981) \$6,408. Supports the Deer Creek Community Enrichment Foundation.

DONALD AND WILLADEAN RAMSEY

(1979) \$58,744. Supports the Oklahoma County Council for Mentally Retarded Citizens.

GEORGE J. RECORDS

(1990) \$5,029. Supports the United Way. The fund was started by employees of the Midland Group to honor Mr. Records' thirty-year employment anniversary.

DR. JOHN W. RECORDS

(1988) \$4,803. Supports Planned Parenthood of Central Oklahoma. The board of Planned Parenthood established this fund to honor Dr. Record's contributions to the community.

MARGARET K. REPLOGLE

(1970) \$34,926. Supports World Neighbors and the Salvation Army.

MAXEY AND NORMAN REYNOLDS

(1979) \$4,996. Supports Canterbury Living Center and Heritage Hall.

MR. AND MRS. DUB RICHARDSON

(1977) \$5,468. Supports the Fund for Oklahoma City, Oklahoma City Art Museum, and Kirkpatrick Center.

MR. AND MRS. CLARK A. RITCHIE

(1975) \$2,136. Supports the Allied Arts Foundation.

SISTER HILDEGARDE ROAN MEMORIAL

(1987) \$26,754. Supports Villa Teresa School. The fund was established by the Carmelite Sisters in memory of one of their members who taught at Villa Teresa.

CLARENCE AND BEULAH ROBERTS

(1976) \$5,272. Supports Allied Arts Foundation and World Neighbors. The fund was established by Mrs. Roberts in memory of her husband, a well-known agriculture expert.

PAUL MICHAEL ROCKNE MEMORIAL

(1987) \$5,340. Supports Villa Teresa School. The fund was established by the Carmelite Sisters in memory of a victim of the Edmond Post Office killings.

MR. AND MRS. JOHN RORING FUND

(1976) \$13,084. Supports arthritis research.

WAYNE BANES RUMLEY

(1988) \$5,340. Supports the National Cowboy Hall of Fame.

MR. AND MRS. JOSEPH F. RUMSEY, JR.

(1976) \$55,917. Supports donor-advised contributions.

MARY BAKER RUMSEY

(1976) \$1,175. Supports Speck Homes. Mrs. Rumsey is well remembered as the founding president of the Oklahoma City Junior League.

SARKEYS FOUNDATION

(1974) \$8,061. Supports the Fund for Oklahoma City.

J.B. SAUNDERS
(1970) \$418,637.
Supports Oklahoma City University, Oklahoma Christian College, Omniplex, and other organizations. Mr. Saunders is a former trustee of the Community Foundation.

J.B. SAUNDERS, III
(1979) \$22,307.
Supports Oklahoma Christian College and Omniplex.

LEONARD H. SAVAGE
(1973) \$17,362.
Supports the Fund for Oklahoma City.

CURT SCHWARTZ LYRIC THEATRE SCHOLARSHIP
(1986) \$16,074.
Supports a scholarship fund at Lyric Theatre. The fund was established by the board of Lyric in memory of Mr. Schwartz, an ardent supporter of arts in Oklahoma.

CHARLES AND ALLEYNE SCHWEINLE
(1975) \$6,201. Supports the Fund for Oklahoma City.

LUCILE AND WILLARD SCOTT
(1976) \$5,340. Supports the Allied Arts Foundation.

A. TOM F. AND GLADYS SEALE
(1986) \$27,437.
Supports donor-advised contributions.

SEMINOFF, BOWMAN & ASSOCIATES
(1976) \$7,670. Supports the Kirkpatrick Center.

GEORGE AND SHARON SEMINOFF
(1974) \$5,420. Supports Westminster School.

MARY AND SPENCER SESSIONS MEMORIAL
(1989) \$8,070. Started by Mr. and Mrs. Sessions' sons, the fund supports an annual teaching award for an outstanding classroom teacher in the Guthrie Public School System.

BEN AND BERNARD SHANKER
(1974) \$11,749.
Supports Crimestoppers and Youth Services for Oklahoma County.

WILLIAM F. AND PAM SHDEED
(1976) \$6,757. Supports Camp Classen, and Oklahoma City University Law School.

WILLIE ELIZABETH SHIPLEY
(1981) \$232,127.
Supports the scholarship endowment. Miss Shipley was the clerk of the Oklahoma State Senate and left her estate for scholarships for students from Western Oklahoma.

CARRIE SHIRK MEMORIAL
(1970) \$4,996. Supports donor-advised contributions. The fund was established by George Shirk and Lucyl Shirk in memory of their mother, an early Oklahoma City settler.

GEORGE H. SHIRK
(1978) \$34,714.
Supports several organizations. Mr. Shirk was Mayor of Oklahoma City and supporter of many local efforts to preserve Oklahoma's history and archives.

E.H. SHOEMAKER
(1973) \$1,068. Supports the National Cowboy Hall of Fame.

ALICE A. SIAS
(1983) \$5,340. Supports symphonic music in Oklahoma City.

R.L. AND JEANETTE F. SIAS
(1982) \$18,620.
Supports the Allied Arts, symphonic music fund, Institute for International Education, and Omniplex.

MORRIS AND LIBBY SINGER FOUNDATION
(1977) \$119,024.
Supports the Baptist Medical Center, Jewish Federation, and donor-advised contributions. The fund was established by their son, Joseph B. Singer.

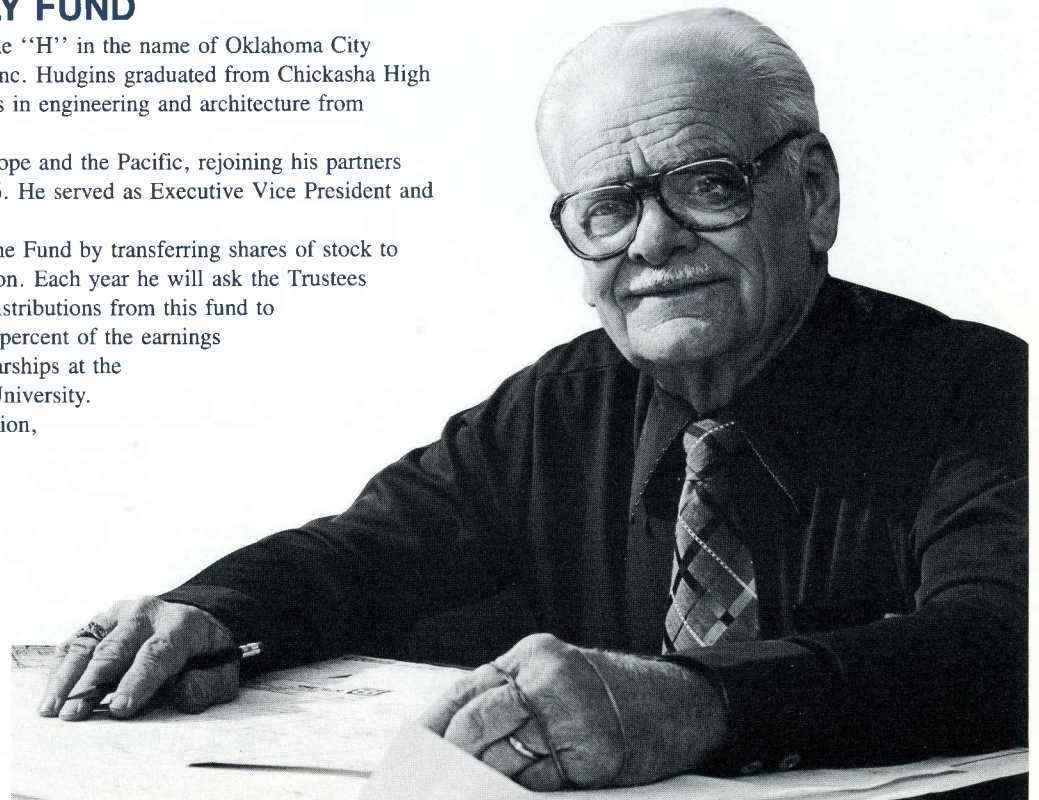
NAME FUND

G. ED HUDGINS FAMILY FUND

George Hudgins' last name provides the "H" in the name of Oklahoma City architecture and engineering firm HTB, Inc. Hudgins graduated from Chickasha High School in 1926, then received his degrees in engineering and architecture from Oklahoma A & M College in Stillwater.

During World War II he served in Europe and the Pacific, rejoining his partners Ralph Ball and Verlin Thompson in 1946. He served as Executive Vice President and later as President of HTB until 1984.

Hudgins created a Donor-Advised Name Fund by transferring shares of stock to the Oklahoma City Community Foundation. Each year he will ask the Trustees of the Community Foundation to make distributions from this fund to organizations that he has supported. Ten percent of the earnings from his fund will be used for two scholarships at the Architecture School of Oklahoma State University. Ten percent goes to the Arthritis Foundation, forty percent to Oklahoma Medical Research Foundation, and forty percent to the Salvation Army of Oklahoma City.



R. EMERY AND MARY LEE SMISER

(1978) \$16,835.

Supports the Fund for Oklahoma City.

ANNA MAUDE SMITH

(1974) \$2,136. Supports the Foundation for Senior Citizens.

PAUL AND LILLYANNE SMITH

(1978) \$7,376. Supports eight different organizations.

EARL AND CORNELIA SNEED

(1974) \$7,477. Supports Crimestoppers and the Allied Arts. Mr. Sneed was president of Liberty Bank and a fiscal trustee of the Community Foundation.

SOROPTIMIST CLUB OF OKLAHOMA CITY

(1976) \$8,003. Supports donor-advised contributions.

JOHN K. SPECK FAMILY

(1971) \$3,204. Supports Speck Homes. Mr. Speck, an Oklahoma City attorney, helped found Speck Home to deal with increasing problems of juvenile delinquency.

MELVIN AND DENA SPENCER

(1977) \$6,408. Supports Deaconess Hospital. Mr. Spencer is a long-time administrator at Deaconess Hospital.

MR. AND MRS. E.M. STANLEY FUND

(1987) \$25,971. Supports the Fund for Oklahoma City. Mrs. Stanley, from Hobart, Oklahoma, established this fund with a bequest in her will.

MR. AND MRS. WALTER J. STARK

(1979) \$1,228. Supports the Dean A. McGee Eye Institute.

THOMAS H. STERLING MEMORIAL

(1977) \$3,204. Supports World Neighbors.

ROY P. AND JUNE W. STEWART

(1978) \$7,413. Supports World Neighbors.

STIFEL, NICOLAUS & COMPANY

(1986) \$18,030. Supports Bishop McGuinness High School.

CHARLES B. AND LOIS STUART

(1977) \$38,254. Supports the Fund for Oklahoma City. Mr. Stuart is a former fiscal trustee of the Community Foundation and trust officer at Fidelity Bank.

MRS. R.T. STUART

(1977) \$6,317. Supports the Dean A. McGee Eye Institute.

STUART FOUNDATION

(1988) \$10,384. Supports the Oklahoma Air and Space Museum.

CAROL DAUBE SUTTON

(1982) \$5,245. Supports Omniplex.

GEORGE MIKSCH SUTTON

(1971) \$16,021. Supports the Oklahoma Zoological Society. The fund was established by John Kirkpatrick to honor the distinguished ornithologist at the University of Oklahoma.

RICHARD E. AND GENEVA T. SWAN

(1979) \$2,900. Supports the National Society of Colonial Dames and Omniplex.

MR. AND MRS. M.A. SWATEK MEMORIAL

(1970) \$1,240. Supports the Fund for Oklahoma City. The fund was established by Judge and Mrs. Luther Bohannon to honor the Swateks, two pioneers of the 1889 Land Run.

OKLAHOMA SYMPHONY ORCHESTRA

(1980) \$40,587. Supports symphonic music in Oklahoma City.

RICHARD G. TAFT, JR. MEMORIAL

(1983) \$14,332. Supports the Fund for Oklahoma City.

WILLIAM H. TAFT MEMORIAL

(1976) \$36,757. Supports the Fund for Oklahoma City, Speck Homes, and Westminster School.

JANET M. TALIAFERRO

(1986) \$13,766. Supports Canterbury Choral Society and Planned Parenthood of Central Oklahoma.

MARIA TALLCHIEF

(1976) \$5,246. Supports Ballet Oklahoma. The fund was established by Mr. and Mrs. Bryan Arnn to honor this well-known ballerina.

JOHN W. AND JO TARR

(1981) \$18,691. Supports the Deer Creek Community Enrichment Foundation.

MR. AND MRS. JIMMIE C. THOMAS

(1979) \$6,201. Supports the Fund for Oklahoma City.

MICHAEL C. THOMAS FAMILY

(1975) \$6,660. Supports the Fund for Oklahoma City and Allied Arts.

MR. AND MRS. TOM A. THOMAS, JR.

(1979) \$10,681. Supports the Oklahoma Air Space Museum.

DR. AND MRS. WAYMAN J. THOMPSON

(1976) \$1,602. Supports medical research.

J. EUGENE TORBETT

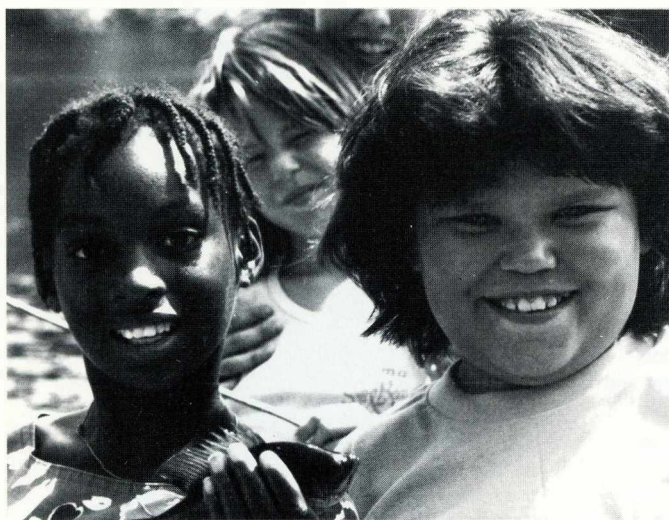
(1983) \$3,141. Supports Neighbor for Neighbor.

GUY B. AND LOUISE TREAT

(1977) \$5,771. Supports the Fund for Oklahoma City, Allied Arts and World Neighbors.

THE TRUE FOUNDATION

(1988) \$10,681. Supports the National Cowboy Hall of Fame.



GRANTS

CHILDREN AND YOUTH

If the young are our future, the faces of these campers are a sign of hope. Sugar Creek Camp provides a summer camp and reading enrichment experience for children from low-income families. The Salvation Army Boys and Girls Clubs provides safe places for children to go after school to release energy, finish homework, and learn new skills. The goal, says one of its directors, is to help kids think long term. The YMCA branches operate Camp Classen every summer and provide recreation and education for children of all ages throughout the year. Special grants from the Oklahoma City Community Foundation have supported all of these activities.

NAME FUND

MARY AND SPENCER SESSIONS MEMORIAL

The Sessions were a Guthrie couple for whom community involvement was a way of life. Mary Sessions was a Guthrie native who taught in the Guthrie Public Schools for 18 years. Her husband, Spencer Sessions, served on the Guthrie Board of Education for 14 years and was its president twice.

Spencer Sessions was a native of Texas who accepted a bank position and moved to Guthrie in the 1920's. There he married Mary Elizabeth Barnes in 1926. Mary continued teaching until 1944, when their first son John was born. Their second son, Don, was born two years later.

The same year, Spencer bought part interest in Loy's Hardware, later renamed Sessions Hardware and Gifts. As their children grew older, Mary joined him in the business. John recalls that the store was never quite the same after his mother began to exert her "woman's touch" on the range of products that were sold there. Mary convinced management on the wisdom of broadening existing lines of housewares and gifts, as well as adding new lines of fine china and crystal.

Their two sons have established the Sessions Memorial, which will honor a classroom teacher in the Guthrie Public School System with a cash award of at least \$500.



Spencer Sessions

MR. AND MRS. MORRISON G. TUCKER

(1972) \$10,398. Supports Oklahoma City Beautiful and Oklahoma City University. Mr. Tucker is a former fiscal trustee and a former trustee of the Community Foundation.

ROBERT E. AND MARTHA TURNER

(1982) \$10,681. Supports Deer Creek Community Enrichment Foundation.

BERRIEN KINARD UPSHAW

(1974) \$5,361. Supports chamber music in Oklahoma City. The fund was established by Dr. Mark Allen Everett in memory of his brother-in-law.

MR. AND MRS. LAWRENCE V. VAN HORN

(1977) \$34,125. Supports Mercy Health Center and World Neighbors.

LEON G. VOORHEES MEMORIAL

(1974) \$2,670. Supports the Dean A. McGee Eye Institute. The fund was established by Mrs. Voorhees in memory of her husband.

JOHN R. AND ROMAYNE WARREN

(1981) \$6,200. Supports the Fund for Oklahoma City.

DR. O. ALTON AND DOROTHY WATSON

(1979) \$6,201. Supports the National Society of Colonial Dames, the Overholser Mansion, and the Watson Scholarship at the University of Oklahoma Health Sciences Center.

HERMAN AND MARY WEGENER FOUNDATION

(1971) \$160,353. Supports the Fund for Oklahoma City and Omniplex.

BEN K. WEST FAMILY

(1970) \$1,204. Supports donor-advised contributions.

JEROME AND ELLEN WESTHEIMER

(1979) \$5,214. Supports the Oklahoma Art Center.

BEN C. AND ADDIE MAE WILEMAN

(1974) \$16,724. Supports the Fund for Oklahoma City and Boy Scouts of America.

FLORENCE O. WILSON

(1971) \$163,516. Supports the Fund for Oklahoma City and five other organizations. Miss Wilson was the niece of William F. Harn and left his homestead to use as a museum.

GUSTAVE R. WOERZ TRUST

(1989) \$23,277. Supports Oklahoma Society for Crippled Children.

ROY G. AND ALTA WOODS MEMORIAL

(1977) \$373,284. Supports Baptist Medical Center, St. Anthony Hospital, and donor-advised contributions. Mrs. Woods established the fund in memory of her husband.

ELECTA MARIE WOODY

(1986) \$6,201. Supports the Fund for Oklahoma City. The fund was established with a gift from her estate.

MURIEL H. WRIGHT HERITAGE

(1973) \$4,767. Supports the Oklahoma Historical Society publications. The fund was started by the Society to honor Dr. Wright and her devotion to Oklahoma history.

D. AND C. WYGANT

(1982) \$10,681. Supports the Deer Creek Community Enrichment Foundation.

HOSIE C. WYNNE

(1973) \$25,204. Supports the Fund for Oklahoma City.

RONALD AND JUDY YORDI

(1984) \$29,421. Supports the Heart of Oklahoma Council of Camp Fire and donor-advised contributions.

MR. AND MRS. R.A. YOUNG

(1970) \$36,156. Supports Oklahoma Baptist University and the Fund for Oklahoma City.

MR. AND MRS. STANTON L. YOUNG

(1974) \$1,068. Supports the Dean A. McGee Eye Institute. Mr. Young is a former trustee of the Community Foundation.

Grants & Distributions

During the fiscal year ending June 30, 1990, the OKLAHOMA CITY COMMUNITY FOUNDATION distributed \$1,938,428 of endowment earnings to support community organizations and activities. These grants were made through four separate programs:

DESIGNATED FUND EARNINGS

Earnings from contributions to the Community Foundation which have been specifically designated to benefit individual charitable organizations. In addition to these cash distributions, the agencies also received an allocation from realized investment gains.

DONOR-ADVISED GRANTS

Grants from Name Funds where the donor is able to advise the Trustees of the Community Foundation on which organization should receive contributions from their Name Funds.

TRUSTEE GRANTS

Grants made by the Trustees of the Community Foundation to meet special needs in the community. Contributions to the Fund for Oklahoma City and other restricted funds have come from many different Name Funds.

AFFILIATED FUNDS

Grants from the Omniplex Affiliated Fund, the Kirkpatrick Center Affiliated Fund, or the William E. and Margaret H. Davis Family Fund are made by the Trustees of those funds and administered by the Community Foundation.

45TH INFANTRY DIVISION ASSOCIATION

Designated Fund \$ 1920.00

A CHANCE TO CHANGE — CHEMICAL DEPENDENCY INSTITUTE

Designated Fund \$ 2240.00
Davis Family Fund \$ 300.00

ALL SOULS EPISCOPAL CHURCH

Davis Family Fund \$ 1000.00

ALLIED ARTS FOUNDATION

Designated Fund \$ 24086.20
Donor-Advised Fund \$ 750.00
Davis Family Fund \$ 1000.00

ALPHABETIC PHONICS TEACHER TRAINING — KATHERYNE B. PAYNE FOUNDATION

Designated Fund \$ 408.00
Donor-Advised Fund \$ 15000.00
Davis Family Fund \$ 500.00

AMERICAN CANCER SOCIETY

Designated Fund \$ 6275.60
Davis Family Fund \$ 700.00

AMERICAN CIVIL LIBERTIES UNION

Davis Family Fund \$ 400.00

AMERICAN DIABETES ASSOCIATION

Designated Fund \$ 1878.83

AMERICAN RED CROSS — OKLAHOMA COUNTY CHAPTER

Designated Fund \$ 4855.19
Davis Family Fund \$ 1850.00



Before trees were planted on the May Avenue median between the fairgrounds and Great Plains Coca-Cola Bottling Company, this is what it looked like.



This is the same median, one year after Great Plains Coca-Cola established an extensive program with the Tree Bank to plant and maintain the trees.

DESIGNATED FUND

OKLAHOMA CITY TREE BANK

The Greater Oklahoma City Tree Bank Foundation sprouted in the spring of 1987 from Oklahoma City Beautiful and the Beautification Committee of the Oklahoma City Chamber of Commerce.

Since then, nearly 20,000 trees have been planted on public and non-profit agency lands. This achievement was made possible by a \$1 per year leasing arrangement with the Reiger family tree farm in Guthrie. Initial surveys for the first two years indicated a transplant survival rate of 94 percent.

In 1988, the Oklahoma City Community Foundation made a grant of \$8,000 to the Tree Bank. The next year, a second grant of \$5,000 was made to fund the seedling replacement program. That grant was contingent on matching funds being placed at the Foundation to start a designated fund.

While the Reiger lease was not renewed this year, additional trees may be obtained from various sources. A new arrangement with the El Reno Federal Correctional Institution will enable 2,000 new seedlings to be cared for on its land. The Tree Bank's goal of giving central Oklahoma an urban forest is just beginning.

ARCADIA HISTORICAL PRESERVATION SOCIETY	
Trustee Grant	\$ 7000.00
Davis Family Fund	\$ 300.00
AREAWIDE AGING AGENCY	
Donor-Advised Fund	\$ 500.00
THE ARK	
Davis Family Fund	\$ 300.00
ARTS COUNCIL OF OKLAHOMA CITY	
Designated Fund	\$ 3838.00
Donor-Advised Fund	\$ 2000.00
ARTSPPLACE II	
Davis Family Fund	\$ 500.00
B'NAI BRITH HILLEL FOUNDATION	
Designated Fund	\$ 3200.00
BALLET OKLAHOMA	
Designated Fund	\$ 4380.53
Donor-Advised Fund	\$ 1100.00
Trustee Grant	\$ 10000.00
Davis Family Fund	\$ 400.00
BAPTIST BURN CENTER	
Designated Fund	\$ 932.29
BAPTIST MEDICAL CENTER OF OKLAHOMA	
Designated Fund	\$ 28313.49
Donor-Advised Fund	\$ 11100.00
BAPTIST RETIREMENT CENTER	
Designated Fund	\$ 2000.00
BIG BROTHERS/BIG SISTERS OF GREATER OKLAHOMA CITY	
Designated Fund	\$ 3068.00
Davis Family Fund	\$ 1200.00
BISHOP MCGUINNESS HIGH SCHOOL	
Designated Fund	\$ 1600.00
BOY SCOUTS OF AMERICA, LAST FRONTIER COUNCIL	
Designated Fund	\$ 15942.38
Donor-Advised Fund	\$ 5500.00
Davis Family Fund	\$ 200.00
CBN — HEADS UP	
Davis Family Fund	\$ 1000.00
CANTERBURY CHORAL SOCIETY	
Designated Fund	\$ 3146.66
CANTERBURY LIVING CENTER	
Designated Fund	\$ 480.00
CASADY SCHOOL	
Designated Fund	\$ 6848.87
Donor-Advised Fund	\$ 1975.00
Davis Family Fund	\$ 500.00
CATHOLIC SOCIAL MINISTRIES	
Designated Fund	\$ 606.40
CELEBRATIONS! EDUCATIONAL SERVICES	
Designated Fund	\$ 2096.00
CENTER FOR OKLAHOMA DRUG AND ALCOHOL SERVICES	
Davis Family Fund	\$ 200.00
CENTER OF THE AMERICAN INDIAN	
Designated Fund	\$ 2424.23
Donor-Advised Fund	\$ 1200.00
CENTRAL OKLAHOMA ASSOCIATION FOR DEAF-HEARING IMPAIRED	
Designated Fund	\$ 490.00
Davis Family Fund	\$ 300.00
CEREBRAL PALSY AND HANDICAPPED OF OKLAHOMA	
Designated Fund	\$ 1448.00
CHAMBER MUSIC ASSOCIATION	
Donor-Advised Fund	\$ 400.00



Mobile Meals is a service coordinated by Eldercare that brings food and the warmth of friendly volunteers from 50 churches in the Oklahoma City area. Other programs for the elderly supported by the Oklahoma City Community Foundation are the Daily Living Centers' therapeutic day care program and RSVP, which provides volunteer activities for persons over age 60.

CHILDREN'S MEDICAL RESEARCH FOUNDATION		
Designated Fund	\$ 560.00	
Donor-Advised Fund	\$ 1000.00	
Davis Family Fund	\$ 200.00	
CHOPIN SOCIETY OF MID-AMERICA		
Trustee Grant	\$ 1000.00	
CHRISTMAS CONNECTION		
Davis Family Fund	\$ 1000.00	
CIMARRON CIRCUIT OPERA COMPANY		
Designated Fund	\$ 896.00	
Trustee Grant	\$ 6000.00	
Davis Family Fund	\$ 250.00	
CITIZENS CONCERNED FOR CHILDREN		
Designated Fund	\$ 400.00	
CITY ARTS CENTER		
Trustee Grant	\$ 1500.00	
COMMUNITY COUNSELING CENTER		
Davis Family Fund	\$ 300.00	
COMMUNITY LEARNING CENTER		
Davis Family Fund	\$ 200.00	
CONTACT OF METROPOLITAN OKLAHOMA CITY		
Designated Fund	\$ 400.00	
COUNCIL FOR 1989		
Designated Fund	\$ 920.56	
CRIMESTOPPERS—FOUNDATION FOR IMPROVED POLICE PROTECTION		
Designated Fund	\$ 1200.00	
Trustee Grant	\$ 5800.00	
Davis Family Fund	\$ 200.00	
CROWN HEIGHTS UNITED METHODIST CHURCH FOUNDATION		
Donor-Advised Fund	\$ 800.00	
DAILY LIVING CENTER		
Designated Fund	\$ 7708.67	
Donor-Advised Fund	\$ 1100.00	
Davis Family Fund	\$ 250.00	
DALE ROGERS GROUP HOME		
Designated Fund	\$ 1200.00	
DEACONESS HOME		
Designated Fund	\$ 1488.72	
DEACONESS HOSPITAL		
Designated Fund	\$ 8780.16	

DEER CREEK COMMUNITY ENRICHMENT FOUNDATION

Designated Fund	\$ 13602.00
Trustee Grant	\$ 10000.00
Davis Family Fund	\$ 250.00

ELDERCARE ACCESS CENTER

Davis Family Fund	\$ 500.00
-------------------	-----------

ENTERPRISE SQUARE

Donor-Advised Fund	\$ 100.00
--------------------	-----------

EXECUTIVE WOMEN INTERNATIONAL

Designated Fund	\$ 2775.83
-----------------	------------

CAL FARLEY'S BOYS RANCH

Donor-Advised Fund	\$ 800.00
--------------------	-----------

FELLOWSHIP OF CHRISTIAN ATHLETES OKLAHOMA CHAPTER

Designated Fund	\$ 5280.00
Donor-Advised Fund	\$ 10000.00

FELLOWSHIP OF CHRISTIAN ATHLETES — STEPHEN B. PAYNE SCHOLARSHIP

Designated Fund	\$ 2439.60
-----------------	------------

FINE ARTS INSTITUTE OF EDMOND

Designated Fund	\$ 300.00
Trustee Grant	\$ 1000.00

FOUNDATION FOR SENIOR CITIZENS

Designated Fund	\$ 2280.00
-----------------	------------

FREE TO LIVE

Davis Family Fund	\$ 250.00
-------------------	-----------

FREEDOMS FOUNDATION AT VALLEY FORGE

Donor-Advised Fund	\$ 100.00
--------------------	-----------

FRIENDS OF THE METROPOLITAN LIBRARY SYSTEM

Designated Fund	\$ 2640.83
-----------------	------------

GENESIS PROJECT

Designated Fund	\$ 1468.00
-----------------	------------

GREATER OKLAHOMA CITY TREE BANK FOUNDATION

Donor-Advised Fund	\$ 100.00
Trustee Grant	\$ 5000.00
Davis Family Fund	\$ 700.00

HARN HOMESTEAD AND 1889'ER MUSEUM

Designated Fund	\$ 2026.40
Donor-Advised Fund	\$ 900.00

HEALING HANDS

Trustee Grant	\$ 2500.00
Davis Family Fund	\$ 300.00

HEART OF OKLAHOMA COUNCIL OF CAMP FIRE

Designated Fund	\$ 8813.99
Donor-Advised Fund	\$ 2000.00

HERITAGE HALL

Designated Fund	\$ 17617.52
Trustee Grant	\$ 2500.00

HISPANIC CENTER

Designated Fund	\$ 800.00
-----------------	-----------

HOSPITAL HOSPITALITY HOUSE

Designated Fund	\$ 320.00
-----------------	-----------

INDIVIDUAL ARTISTS OF OKLAHOMA

Davis Family Fund	\$ 250.00
-------------------	-----------

INFANT CRISES SERVICES

Designated Fund	\$ 1183.33
Donor-Advised Fund	\$ 7000.00
Davis Family Fund	\$ 300.00

INSTITUTE FOR INTERNATIONAL EDUCATION

Designated Fund	\$ 5948.00
Donor-Advised Fund	\$ 25.00

INSTITUTE FOR INTERNATIONAL EDUCATION — PRATT INTERNSHIP

Designated Fund	\$ 3877.86
-----------------	------------

INTERNATIONAL PHOTOGRAPHY HALL OF FAME

Designated Fund	\$ 3717.76
-----------------	------------

JESUS HOUSE

Designated Fund	\$ 86.33
Davis Family Fund	\$ 550.00

JEWISH FEDERATION OF GREATER OKLAHOMA CITY

Designated Fund	\$ 8752.60
-----------------	------------

JUNIOR ACHIEVEMENT

Designated Fund	\$ 1972.08
Davis Family Fund	\$ 300.00

JUNIOR HOSPITALITY CLUB

Designated Fund	\$ 3876.93
-----------------	------------

JUNIOR LEAGUE OF OKLAHOMA CITY

Designated Fund	\$ 6267.04
-----------------	------------

KCSC CENTRAL STATE UNIVERSITY

Davis Family Fund	\$ 400.00
-------------------	-----------

KOKF

Davis Family Fund	\$ 200.00
-------------------	-----------

KERR-MCGEE SWIM CLUB

Designated Fund	\$ 880.05
-----------------	-----------

KIRKPATRICK CENTER

Designated Fund	\$ 89839.97
Affiliated Fund	\$349000.00
Donor-Advised Fund	\$ 200.00

KROUCH PRESCHOOL

Designated Fund	\$ 769.24
-----------------	-----------

LA FETE DU COEUR

Davis Family Fund	\$ 5000.00
-------------------	------------

LAKE HEFNER TRAILS

Davis Family Fund	\$ 100.00
-------------------	-----------

LANGSTON UNIVERSITY

Designated Fund	\$ 17642.12
-----------------	-------------

LARRY JONES MINISTRIES

Davis Family Fund	\$ 450.00
-------------------	-----------

LEADERSHIP OKLAHOMA CITY

Designated Fund	\$ 4944.46
Donor-Advised Fund	\$ 2500.00
Trustee Grant	\$ 4000.00
Davis Family Fund	\$ 200.00

LUTHERAN SOCIAL SERVICES

Designated Fund	\$ 80.00
-----------------	----------

LYRIC THEATRE

Designated Fund	\$ 13264.00
Donor-Advised Fund	\$ 100.00
Davis Family Fund	\$ 350.00

LYRIC THEATRE CURT SCHWARTZ SCHOLARSHIP

Designated Fund	\$ 1203.96
-----------------	------------

DEAN MCGEE EYE INSTITUTE

Designated Fund	\$ 10374.02
Davis Family Fund	\$ 100.00

MEADOWS CENTER FOR OPPORTUNITY

Designated Fund	\$ 591.15
Davis Family Fund	\$ 750.00

MENTAL HEALTH ASSOCIATION IN OKLAHOMA COUNTY

Designated Fund	\$ 860.00
Trustee Grant	\$ 2000.00
Davis Family Fund	\$ 300.00

MERCY HEALTH CENTER

Designated Fund	\$ 7108.00
Donor-Advised Fund	\$ 10000.00

MOUNT ST. MARY HIGH SCHOOL

Designated Fund	\$ 2200.00
-----------------	------------

MULTIPLE SCLEROSIS SOCIETY

Davis Family Fund	\$ 650.00
-------------------	-----------

MYRIAD GARDENS

Designated Fund	\$ 304.00
Davis Family Fund	\$ 100.00

NACE/CITIZENS FOR EXCELLENCE IN EDUCATION

Davis Family Fund	\$ 350.00
-------------------	-----------

NATIONAL COWBOY HALL OF FAME

Designated Fund	\$ 31625.92
Davis Family Fund	\$ 300.00

NATIONAL SOCIETY OF COLONIAL DAMES IN AMERICA, OKLAHOMA CHAPTER

Designated Fund	\$ 6091.20
-----------------	------------



During a recent Hospice volunteer training session, oncologist Dr. Khader Hussein, seated second from left, discusses the medical aspects of terminal illnesses. The program was initiated by Oklahoma County Medical Society physicians, who perceived a continued need in Oklahoma County for non-profit, community-based care for people for whom cure is no longer possible. The Oklahoma City Community Foundation has created an escrowed account to hold contributions for the new Hospice organization until it receives its tax exempt status.

SPECIAL SERVICES

ESCROWED FUNDS

Escrowed Funds are contributions to the Oklahoma City Community Foundation that do not become part of the permanent endowment. Instead, the principal amount of the gift is distributed over time to charitable organizations in the Oklahoma City area. Currently, the Community Foundation administers 61 escrowed accounts.

Escrowed Funds can be used for a variety of purposes. A donor to an escrowed fund may make a contribution in one year, perhaps one in which the tax benefits to him are greatest. In following years he may request that distributions from the fund be used for grants to specific charities.

Sometimes escrowed funds are funds to accumulate contributions for a special project, thereby avoiding the need for a new organization to receive the funds and safeguard them.

In the case of a new charitable organization that has not yet received its tax exempt status, donors to that charity may direct their contributions to an escrowed account pending receipt of tax-exempt status by the organization. In the meantime, the Oklahoma City Community Foundation can make grants from those funds to cover the organization's current expenses.

NEIGHBOR FOR NEIGHBOR

Designated Fund \$ 11644.14

NEIGHBORHOOD DEVELOPMENT AND CONSERVATION CENTER

Designated Fund \$ 400.00
Trustee Grant \$ 1500.00

NEIGHBORHOOD SERVICES ORGANIZATION

Designated Fund \$ 2240.00
Davis Family Fund \$ 300.00

NICHOLS HILLS PARKS ASSOCIATION

Donor-Advised Fund \$ 7300.00
Davis Family Fund \$ 500.00

NORTHERN LIGHTS SHARE

Davis Family Fund \$ 650.00

OU MEDICAL COLLEGE ALUMNI RESEARCH FUND

Designated Fund \$ 1000.00

OU MEDICAL COLLEGE ALUMNI RESEARCH FUND — HEART DISEASE

Designated Fund \$ 2709.22
Davis Family Fund \$ 100.00

OU MEDICAL COLLEGE ALUMNI RESEARCH FUND — ALLERGY

Designated Fund \$ 2401.59
Davis Family Fund \$ 100.00

OU MEDICAL COLLEGE ALUMNI RESEARCH FUND — ARTHRITIS

Designated Fund \$ 4819.60
Davis Family Fund \$ 100.00

OU MEDICAL COLLEGE ALUMNI RESEARCH FUND — PARKINSON'S DISEASE

Designated Fund \$ 3815.24
Davis Family Fund \$ 100.00

OKLAHOMA ARTS INSTITUTE

Designated Fund \$ 4160.00
Donor-Advised Fund \$ 100.00

OKLAHOMA AVIATION AND SPACE HALL OF FAME

Designated Fund \$ 15309.48

OKLAHOMA BAPTIST UNIVERSITY

Designated Fund \$ 4374.85

OKLAHOMA BAPTIST UNIVERSITY — BUSINESS SCHOOL

Designated Fund \$ 5199.84

OKLAHOMA BAPTIST UNIVERSITY — HOBBS LECTURESHIP

Designated Fund \$ 8032.97

OKLAHOMA BAPTIST UNIVERSITY — SCHOLARSHIPS

Designated Fund \$ 2800.00

OKLAHOMA CHILDREN'S THEATRE

Designated Fund \$ 941.60
Donor-Advised Fund \$ 1500.00

OKLAHOMA CHRISTIAN SCHOOLS

Davis Family Fund \$ 12250.00

OKLAHOMA CHRISTIAN UNIVERSITY OF SCIENCE AND ARTS

Designated Fund \$ 28574.63

OKLAHOMA CITY ART MUSEUM

Designated Fund \$ 34053.21
Donor-Advised Fund \$ 2500.00
Trustee Grant \$ 15000.00
Davis Family Fund \$ 5200.00

OKLAHOMA CITY BEAUTIFUL

Designated Fund \$ 3100.18
Donor-Advised Fund \$ 100.00
Trustee Grant \$ 5000.00
Davis Family Fund \$ 800.00

OKLAHOMA CITY COMMUNITY COLLEGE

Designated Fund \$ 2000.00

OKLAHOMA CITY COMMUNITY FOOD BANK

Designated Fund \$ 280.00
Davis Family Fund \$ 200.00

OKLAHOMA CITY METRO ALLIANCE FOR SAFER CITIES

Trustee Grant \$ 5000.00

OKLAHOMA CITY OPERA ASSOCIATION

Designated Fund \$ 3521.43

OKLAHOMA CITY ORCHESTRA LEAGUE

Trustee Grant \$ 1600.00

OKLAHOMA CITY PHILHARMONIC ORCHESTRA

Donor-Advised Fund \$ 1250.00
Trustee Grant \$ 10000.00
Davis Family Fund \$ 250.00

OKLAHOMA CITY PUBLIC SCHOOLS FOUNDATION

Designated Fund \$ 5048.00

OKLAHOMA CITY UNIVERSITY

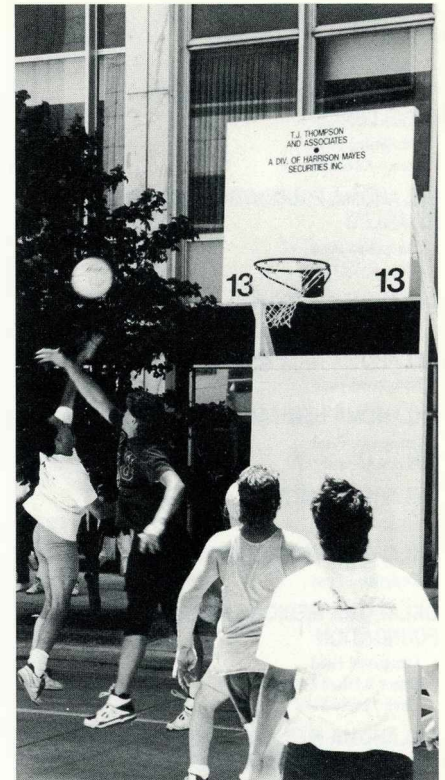
Designated Fund \$ 86394.08
Donor-Advised Fund \$ 2100.00

OKLAHOMA CITY UNIVERSITY — ART DEPARTMENT

Designated Fund \$ 80.00
Davis Family Fund \$ 350.00

OKLAHOMA CITY UNIVERSITY — BENHAM PROFESSORSHIP

Designated Fund \$ 6560.00



Hoopfest was a three-on-three basketball tournament among 257 teams playing on outdoor basketball courts erected in downtown Oklahoma City last June. The Oklahoma City Community Foundation created an escrowed account for sponsor contributions which helped cover expenses. The event, coordinated by title sponsor, City Bank, netted \$14,500 for Special Care, Inc. and Children's Medical Research Foundation.

OKLAHOMA CITY UNIVERSITY — FINE ARTS DEPARTMENT

Designated Fund \$ 1400.00

OKLAHOMA CITY UNIVERSITY — LAW SCHOOL DEAN'S FUND

Designated Fund \$ 117.33

OKLAHOMA CITY UNIVERSITY — TAFT INSTITUTE

Designated Fund \$ 4242.00

OKLAHOMA CITY ZOOLOGICAL TRUST-AQUATICUS

Donor-Advised Fund \$ 500.00

OKLAHOMA COMMUNITY THEATRE ASSOCIATION

Designated Fund \$ 610.67

OKLAHOMA COUNTY COUNCIL FOR MENTALLY RETARDED CITIZENS

Designated Fund \$ 10040.00
Davis Family Fund \$ 100.00

OKLAHOMA COUNTY HISTORICAL SOCIETY

Designated Fund \$ 2726.66
Donor-Advised Fund \$ 300.00

OKLAHOMA EDUCATIONAL TELEVISION AUTHORITY

Donor-Advised Fund \$ 75.00
Davis Family Fund \$ 500.00

OKLAHOMA FOLKLIFE COUNCIL

Trustee Grant \$ 5000.00

OKLAHOMA FOUNDATION FOR EPILEPSY	
Designated Fund	\$ 1304.86
OKLAHOMA FOUNDATION FOR EXCELLENCE	
Designated Fund	\$ 400.00
Donor-Advised Fund	\$ 10000.00
OKLAHOMA FOUNDATION FOR THE DISABLED	
Designated Fund	\$ 2140.00
Davis Family Fund	\$ 300.00
OKLAHOMA GOODWILL INDUSTRIES	
Designated Fund	\$ 7283.68
OKLAHOMA HALFWAY HOUSE, INC.	
Designated Fund	\$ 480.00
OKLAHOMA HERITAGE ASSOCIATION	
Designated Fund	\$ 5804.00
Donor-Advised Fund	\$ 100.00
OKLAHOMA HISTORICAL SOCIETY	
Designated Fund	\$ 1739.84
OKLAHOMA HORTICULTURE SOCIETY	
Designated Fund	\$ 138.75
OKLAHOMA MEDICAL RESEARCH FOUNDATION	
Designated Fund	\$ 10400.00
Donor-Advised Fund	\$ 500.00
Davis Family Fund	\$ 850.00
OKLAHOMA MEDICAL RESEARCH FOUNDATION — RESEARCH FUND	
Designated Fund	\$ 820.00
OKLAHOMA MEDICAL RESEARCH FOUNDATION — FLEMING SCHOLARSHIP	
Designated Fund	\$ 4000.00
Donor-Advised Fund	\$ 40000.00
OKLAHOMA SHAKESPEARE IN THE PARK	
Designated Fund	\$ 300.00
OKLAHOMA SOCIETY FOR CRIPPLED CHILDREN	
Designated Fund	\$ 400.00
OKLAHOMA STATE UNIVERSITY OKLAHOMA CITY	
Designated Fund	\$ 100.00

OKLAHOMA STATE UNIVERSITY OKLAHOMA CITY — HORTICULTURE DEPARTMENT	
Designated Fund	\$ 4636.96
OKLAHOMA STATE UNIVERSITY OKLAHOMA CITY — RUMSEY GARDEN	
Designated Fund	\$ 506.00
Donor-Advised Fund	\$ 1400.00
OKLAHOMA VISUAL ARTS COALITION	
Davis Family Fund	\$ 350.00
OKLAHOMA WESTERNERS INDIAN TERRITORY POSSE	
Designated Fund	\$ 1492.93
OKLAHOMA YOUTH ORCHESTRA — GUY FRASER HARRISON ACADEMY	
Donor-Advised Fund	\$ 1000.00
OKLAHOMA ZOOLOGICAL SOCIETY	
Designated Fund	\$ 12205.94
Davis Family Fund	\$ 550.00
OMNIPLEX	
Designated Fund	\$ 12264.45
Affiliated Fund	\$ 65000.00
Donor-Advised Fund	\$ 2500.00
Davis Family Fund	\$ 5150.00
ONE FLESH MARRIAGE	
Davis Family Fund	\$ 1000.00
OPPORTUNITIES INDUSTRIALIZATION CENTER	
Designated Fund	\$ 7560.00
OVERHOLSER MANSION, AMERICAN INSTITUTE OF ARCHITECTS	
Designated Fund	\$ 1828.80
PATHWAYS CHILD DEVELOPMENT CORPORATION	
Designated Fund	\$ 7324.40
Donor-Advised Fund	\$ 250.00
PLANNED PARENTHOOD OF CENTRAL OKLAHOMA	
Designated Fund	\$ 4026.00
Donor-Advised Fund	\$ 1675.00
Davis Family Fund	\$ 250.00
PRAIRIE DANCE THEATRE	
Designated Fund	\$ 2270.80
Trustee Grant	\$ 2500.00
PRESBYTERIAN HOMES	
Designated Fund	\$ 5885.00

PRESBYTERIAN URBAN MISSION	
Designated Fund	\$ 1284.00
RAINBOW FLEET	
Designated Fund	\$ 1120.00
Donor-Advised Fund	\$ 250.00
RALPH CLINTON MEMORIAL FUND	
Designated Fund	\$ 760.00
REDLANDS COUNCIL OF GIRL SCOUTS	
Designated Fund	\$ 2039.59
REFERRAL CENTER	
Davis Family Fund	\$ 150.00
RETIRED SENIOR VOLUNTEER PROGRAM	
Designated Fund	\$ 971.50
ROBERT BIRD SOCIETY — OUHSC LIBRARY	
Designated Fund	\$ 4800.00
SAINT ANTHONY HOSPITAL FOUNDATION	
Designated Fund	\$ 11324.00
Donor-Advised Fund	\$ 1200.00
Davis Family Fund	\$ 200.00
SAINT GREGORY'S SCHOLARSHIP FOR WOMEN	
Designated Fund	\$ 958.00
SALVATION ARMY	
Designated Fund	\$ 9729.90
Donor-Advised Fund	\$ 75.00
Davis Family Fund	\$ 200.00
SALVATION ARMY BOYS CLUB	
Trustee Grant	\$ 15000.00
SCOPE MINISTRIES INTERNATIONAL	
Designated Fund	\$ 3200.00
SKYLINE URBAN MINISTRY	
Donor-Advised Fund	\$ 2750.00
SOUTH COMMUNITY HOSPITAL	
Designated Fund	\$ 1440.00
SOUTHEAST AREA HEALTH CENTER	
Designated Fund	\$ 690.00
SOUTHWEST POLICY INSTITUTE	
Davis Family Fund	\$ 14000.00



HEALTH GRANT

HEALING HANDS

Healing Hands is a free health clinic within walking distance of the shelters for the homeless in downtown Oklahoma City. For two years The Downtown Baptist Church has donated space for the clinic, located on the second floor of 629 West Main Street. The clinic serves close to 1,000 homeless people a year, or about a quarter of the homeless population in Oklahoma City. The clinic, staffed by a doctor, a nurse, and a case manager five days a week, offers medical services as well as counseling and referrals. Alcoholics Anonymous meetings are held there twice a week.

Last year, the Oklahoma City Community Foundation gave Healing Hands a grant of \$2,500 to purchase antibiotics and other medical supplies.

Two staff members of Healing Hands are discussing the medical supplies that are available in its pharmacy.

EDUCATION GRANT

D.A.R.E.

These children are role playing a situation in which drugs are being offered and refused. This is one of the learning exercises of the Oklahoma City Police Department's D.A.R.E. (Drug Abuse Resistance Education) program, which focuses on teaching children the skills to say "no" to alcohol and drugs. The program, developed by educators, is a school drug prevention curriculum taught by specially selected and trained police officers. A grant of \$5,800 was made by the Community Foundation to help cover the cost of learning materials.



SPECIAL CARE Designated Fund	\$ 440.00	U.S.S. OKLAHOMA CITY Designated Fund	\$ 1466.67	VILLA TERESA SCHOOL Designated Fund	\$ 4019.34
SPECK HOMES Designated Fund	\$ 26246.88	U.S.S. OKLAHOMA CITY — SAILOR OF THE YEAR Designated Fund	\$ 400.00	VISITING NURSES ASSOCIATION Designated Fund	\$ 5040.00
ST. JOHN'S EPISCOPAL SCHOOL Designated Fund	\$ 2200.00	U.S.S. OKLAHOMA CITY — SCHOLARSHIP FUND Designated Fund	\$ 400.00	WESTERNERS INTERNATIONAL Designated Fund	\$ 400.00
ST. JOSEPH CHILDREN'S HOME Designated Fund	\$ 3308.16	UNITED CEREBRAL PALSY Designated Fund	\$ 400.00	WESTMINSTER DAY SCHOOL Designated Fund	\$ 8164.00
STRATEGIC CHRISTIAN SERVICES Davis Family Fund	\$ 250.00	UNITED WAY OF GREATER OKLAHOMA CITY Designated Fund	\$ 4455.54	Donor-Advised Fund	\$ 1100.00
SUGAR CREEK CAMP Designated Fund	\$ 460.00	Donor-Advised Fund	\$ 5135.00	Davis Family Fund	\$ 2000.00
Donor-Advised Fund	\$ 1000.00	UNIVERSITY OF OKLAHOMA MEDICAL COLLEGE WATSON SCHOLARSHIP Designated Fund	\$ 871.04	WORK ACTIVITY CENTER Designated Fund	\$ 3768.00
Davis Family Fund	\$ 250.00	UNIVERSITY OF OKLAHOMA FOUNDATION Donor-Advised Fund	\$ 2000.00	WORLD NEIGHBORS Designated Fund	\$ 19262.62
SUNBEAM HOME AND FAMILY SERVICE Designated Fund	\$ 8442.92	UNIVERSITY OF OKLAHOMA LIBRARY Designated Fund	\$ 6529.20	Davis Family Fund	\$ 450.00
SUPPORT CENTER Donor-Advised Fund	\$ 100.00	UNIVERSITY OF OKLAHOMA SCHOOL OF NURSING Trustee Grant	\$ 15000.00	YMCA Designated Fund	\$ 13955.24
TINKER AIR FORCE BASE GENERAL'S FUND Designated Fund	\$ 2800.00	Davis Family Fund	\$ 250.00	YMCA — CAMP CLASSEN Designated Fund	\$ 2162.72
TRAVELERS AID Designated Fund	\$ 892.67	UNIVERSITY OF OKLAHOMA — NAVAL ROTC Designated Fund	\$ 2000.00	YMCA — CENTRAL BRANCH Designated Fund	\$ 2232.00
Davis Family Fund	\$ 300.00	URBAN LEAGUE Designated Fund	\$ 600.00	YMCA-EASTSIDE BRANCH Designated Fund	\$ 1482.00
TRINITY EPISCOPAL SCHOOL Designated Fund	\$ 166.67	VARIETY HEALTH CENTER Designated Fund	\$ 100.00	Davis Family Fund	\$ 750.00
Davis Family Fund	\$ 500.00			YWCA Designated Fund	\$ 1380.00
U.S. AIR FORCE ACADEMY Designated Fund	\$ 12000.00			Davis Family Fund	\$ 700.00
U.S. MILITARY ACADEMY Designated Fund	\$ 12000.00			YOUTH SERVICES FOR OKLAHOMA COUNTY Designated Fund	\$ 2931.00
U.S. NAVAL ACADEMY Designated Fund	\$ 12000.00			Donor Advised Grant	\$ 1650.00
				Trustee Grant	\$ 2800.00
				Davis Family Fund	\$ 250.00

Cole & Reed, P.C.

INDEPENDENT AUDITORS' REPORT

The Board of Trustees
Oklahoma City Community Foundation, Inc.
Oklahoma City, Oklahoma

We have audited the accompanying statements of assets, liabilities and fund balance arising from cash transactions of Oklahoma City Community Foundation, Inc. as of June 30, 1990 and 1989, and the related statements of activity and changes in fund balance arising from cash transactions, and changes in cash balances for the years then ended. These financial statements are the responsibility of the Foundation's management. Our responsibility is to express an opinion on these financial statements based on our audits.

We conducted our audits in accordance with generally accepted auditing standards. Those standards require that we plan and perform the audit to obtain reasonable assurance about whether the financial statements are free of material misstatement. An audit includes examining, on a test basis, evidence supporting the amounts and disclosures in the financial statements. An audit also includes assessing the accounting principles used and significant estimates made by management, as well as evaluating the overall financial statement presentation. We believe that our audits provide a reasonable basis for our opinion.

As described in Note A, these financial statements were prepared on the basis of cash receipts and disbursements, which is a comprehensive basis of accounting other than generally accepted accounting principles.

In our opinion, the financial statements referred to above present fairly, in all material respects, the assets, liabilities and fund balance arising from cash transactions of Oklahoma City Community Foundation, Inc. at June 30, 1990 and 1989, and the results of its activities and changes in fund balance arising from cash transactions, and the changes in its cash balances for the years then ended, on the basis of accounting described in Note A.

Oklahoma City, Oklahoma
August 17, 1990

Cole and Reed

STATEMENTS OF ASSETS, LIABILITIES AND FUND BALANCE ARISING FROM CASH TRANSACTIONS OKLAHOMA CITY COMMUNITY FOUNDATION, INC.

	June 30	
	1990	1989
ASSETS		
Cash	\$ 58,484	\$ 53,230
Investments:		
Cash equivalent funds	5,733,944	6,608,099
Securities — Note B:		
U.S. Government obligations	18,106,484	20,116,614
Bonds	3,272,063	2,193,852
Common and preferred stocks	16,826,836	12,003,894
	<u>38,205,383</u>	<u>34,314,360</u>
Notes receivable	5,987	5,987
Real estate	132,414	197,413
Oil and gas properties	291,278	322,700
Purchased interest	30,224	14,540
Land	175,000	175,000
Building, net of accumulated depreciation of \$24,461 and \$16,727 at June 30, 1990 and 1989, respectively	130,218	137,952
Furniture and fixtures, net of accumulated depreciation of \$31,580 and \$20,929 at June 30, 1990 and 1989, respectively	31,479	32,853
Other assets	30,122	29,081
	<u>\$44,824,533</u>	<u>\$41,891,215</u>
LIABILITIES AND FUND BALANCE		
LIABILITIES		
Payroll withholdings	\$ 2,197	\$ 1,706
Long-term debt — Note C	2,100	4,200
	<u>4,297</u>	<u>5,906</u>
FUND BALANCE	<u>44,820,236</u>	<u>41,885,309</u>
	<u>\$44,824,533</u>	<u>\$41,891,215</u>

See notes to financial statements.

NOTES TO FINANCIAL STATEMENTS

OKLAHOMA CITY COMMUNITY FOUNDATION, INC.

June 30, 1990

The Oklahoma City Community Foundation, Inc. (the "Foundation") was incorporated December 30, 1968 under the laws of the State of Oklahoma, as a nonprofit organization without capital stock for charitable and educational purposes pertaining to the community of greater Oklahoma City.

NOTE A — SIGNIFICANT ACCOUNTING POLICIES

Basis of Accounting: The Foundation prepares its financial statements on the basis of cash receipts and disbursements; consequently, certain revenues and the related assets are recognized when received rather than when earned, and certain expenses are recognized when paid rather than when the obligation is incurred. The principal differences between this basis and generally accepted accounting principles are due to the methods used to account for donations receivable, accrued interest and dividends, accounts payable and accrued expenses, and distributions payable. The cash basis is used for all instances except purchased interest, which is included as an asset until the income is actually received.

The accompanying financial statements include the assets, liabilities, fund balance and activities of the Foundation and its four affiliated organizations. The William E. and Margaret H. Davis Family Fund of The Oklahoma City Community Foundation, Inc., The Omniplex Affiliated Fund of The Oklahoma City Community Foundation, Inc.,

The Kirkpatrick Center Affiliated Fund of The Oklahoma City Community Foundation, Inc., and The Kirkpatrick Family Affiliated Fund of The Oklahoma City Community Foundation, Inc. The latter two affiliated funds were formed during the year ended June 30, 1989. The four affiliated funds are combined with the Foundation in the accompanying financial statements because the Foundation effectively controls the Funds' Board of Trustees and distributions made by the Funds exclusively benefit the charitable and educational purposes of the Foundation.

Donations: Certain donations made to the Foundation have been designated for a particular purpose by the donors. It is the expressed intention of the Foundation to honor the designations of donors; however, the Foundation reserves the power to exercise final control over all funds.

It is the intent of the Foundation to distribute all escrowed donations received. Thus, these donations will not become a part of the permanent fund balance.

Investments: Securities and other investments are maintained by local trustee banks in various trust funds and are valued at the lower of aggregate cost or market. The cost basis of donated investment is the fair market value at the date of receipt. Cash equivalent funds are comprised of short-term, highly liquid investments that are readily convertible into known amounts of cash.

Property and Equipment: Property and equipment is stated at cost. The cost basis of donated property and equipment is its fair market value at the date of gift. Depreciation is computed on the straight-line method over the estimated useful lives of

**STATEMENTS OF ACTIVITY AND CHANGES
IN FUND BALANCE
ARISING FROM CASH TRANSACTIONS
OKLAHOMA CITY COMMUNITY FOUNDATION, INC.**

	Year Ended June 30, 1990	Year Ended June 30, 1989
	Total	Total
REVENUES		
Investment income	\$ 2,804,114	\$ 2,491,875
Net realized gain from investments	685,603	642,252
Donations received	1,773,599	6,459,302
Escrowed donations	297,399	739,733
	<u>5,560,715</u>	<u>10,333,162</u>
EXPENSES		
Trustee banks' fees for investment management	116,295	105,647
General and administration	188,266	159,030
	<u>304,561</u>	<u>264,677</u>
DISTRIBUTIONS		
Grants	1,938,428	1,556,113
Escrowed funds	332,988	905,231
	<u>2,271,416</u>	<u>2,461,344</u>
EXCESS OF REVENUES OVER EXPENSES AND DISTRIBUTIONS BEFORE DEPRECIATION AND DEPLETION	2,984,738	7,607,141
DEPRECIATION AND DEPLETION	49,811	56,609
EXCESS OF REVENUES OVER EXPENSES, DISTRIBUTIONS, DEPRECIATION AND DEPLETION	2,934,927	7,550,532
FUND BALANCE AT BEGINNING OF YEAR	41,885,309	34,334,777
FUND BALANCE AT END OF YEAR	<u>\$44,820,236</u>	<u>\$41,885,309</u>

See notes to financial statements.

**STATEMENTS OF CHANGES IN CASH BALANCES
OKLAHOMA CITY COMMUNITY FOUNDATION, INC.**

	Year Ended June 30	
	1990	1989
SOURCES OF CASH		
Excess of revenues over expenses, distributions, depreciation and depletion	\$ 2,934,927	\$ 7,550,532
Items not requiring (providing) cash:		
Depreciation and depletion	49,811	56,609
Net realized gain from investments	(685,603)	(642,252)
Non-cash contributions	(397,770)	(3,945,426)
Proceeds from sale of investments	35,174,785	19,351,339
Collections on bequest receivable	—	24,125
Decrease in purchased interest	—	13,722
Increase in payroll withholdings	491	192
	<u>37,076,641</u>	<u>22,408,841</u>
USES OF CASH		
Principal payments on long-term debt	2,100	2,100
Purchase of investments	37,043,286	22,382,761
Purchase of furniture and fixtures	9,276	7,304
Purchase of building additions	—	292
Increase in purchased interest	15,684	—
Increase in other assets	1,041	—
	<u>37,071,387</u>	<u>22,392,457</u>
INCREASE IN CASH	5,254	16,384
CASH AT BEGINNING OF YEAR	53,230	36,846
CASH AT END OF YEAR	<u>\$ 58,484</u>	<u>\$ 53,230</u>

See notes to financial statements.

the assets. The estimated useful lives are five years for furniture and fixtures and twenty years for buildings. Producing oil and gas properties are amortized based on production and are net of accumulated depletion of \$459,973 and \$428,547 at June 30, 1990 and 1989, respectively. Non-producing oil and gas interests are not amortized until such time as they become producing.

NOTE B — INVESTMENTS

Approximate market values for cash equivalent funds and marketable securities maintained by the trustee banks are as follows:

	June 30	
	1990	1989
Cash equivalent funds	\$ 5,733,944	\$ 6,608,099
Securities:		
U.S. Government obligations	18,266,924	20,340,821
Bonds	3,251,390	2,176,507
Common and preferred stocks	21,406,677	14,026,484
	<u>42,924,991</u>	<u>36,543,812</u>
	<u>\$48,658,935</u>	<u>\$43,151,911</u>

Realized gains on sales of marketable securities totalled \$1,005,495 and \$642,252 in 1990 and 1989, respectively. In addition, 1990 operating results include write-downs for permanent impairment of common and preferred stocks totalling \$353,237.

Subsequent to June 30, 1990, the market values of common and preferred stocks decreased; however, in the aggregate, market values of these investments still exceeded the cost by approximately \$2,100,000.

NOTE C — LONG-TERM DEBT

During 1985, the Foundation received a donation of land and a building with a total estimated fair market value of \$225,000. As a requirement of the donation, the Foundation assumed an existing long-term obligation of \$10,500. The long-term obligation is payable in annual installments of \$1,400 through 1988 and \$2,100 thereafter until the final payment in 1991. In addition, interest payments equal to 9.5% of the outstanding principal balance are due semi-annually. Interest costs paid in 1990 and 1989 totalled \$399 and \$598, respectively.

NOTE D — CONTRIBUTED SERVICES

Several of the Foundation's trustees provide contributions in the form of services performed at no cost. The value of the services is not reflected in these statements since it is not susceptible to objective measurement or valuation.

NOTE E — INCOME TAXES

The Internal Revenue Service has ruled that the Foundation qualifies under Section 501(c)(3) of the Internal Revenue code and is, therefore, not subject to tax under present income tax laws.

An Invitation

MANY PEOPLE WOULD LIKE TO CREATE A FOUNDATION OR TRUST THAT WOULD CONTINUE TO RECOGNIZE THEIR CHARITABLE INTERESTS LONG AFTER THEY ARE GONE.

The Oklahoma City Community Foundation was started to provide all donors, large and small, with a way of creating a permanent, charitable fund which would provide financial support for community activities. Since 1969, the Community Foundation has helped donors and non-profit organizations in their efforts to provide ongoing endowment support as well as flexible charitable funds that can respond to the community's changing needs.

IF YOU WOULD LIKE FOR YOUR CURRENT CHARITABLE CONTRIBUTIONS TO BE AN INVESTMENT IN THE FUTURE AS WELL, YOU ARE INVITED TO USE THE OKLAHOMA CITY COMMUNITY FOUNDATION TO ESTABLISH A FUND TO SUPPORT YOUR CHARITABLE INTERESTS.

A NAME FUND at the Community Foundation is a permanent charitable fund named for the donor or another person the donor wishes to honor or remember. Each year the earnings from the Name Fund are distributed back to support community organizations according to the donor's wishes. The contribution is identified to the recipient organizations by the Name Fund source. A Name Fund creates a perpetual source of contributions toward some charitable goal identified by the donor.

Memorials, established through Name Funds, can provide a lasting tribute to the charitable interests of a special person. The contributions of many donors can be accumulated in one fund and an annual contribution to support a charitable interest can be established.

THE OKLAHOMA CITY COMMUNITY FOUNDATION HAS A VARIETY OF GIVING PROGRAMS TO ASSIST DONORS IN DIRECTING THEIR CHARITABLE INTERESTS.

Name Fund earnings can be used in the following ways:

- **FUND FOR OKLAHOMA CITY** — This fund makes grants to a wide range of community activities which meet the changing needs of the people of Oklahoma City. Guidelines for these grants are available through the Community Foundation office.
- **DESIGNATED ENDOWMENTS** — A gift may permanently benefit a specific nonprofit organization. Over two hundred organizations currently receive annual distributions from these endowment contributions.
- **RESTRICTED GIVING** — A gift may be restricted to support a particular type of charity such as youth programs, arts programs, beautification activities, or research. The Trustees of the Community Foundation administer each Fund according to the Donor's intentions.
- **DONOR-ADVISED GIVING** — The Trustees of the Community Foundation each year ask the donor for suggestions on how the earnings should be used. This accommodates both the changing interests of the donor and the needs of the community.
- **SCHOLARSHIPS** — The Community Foundation administers a wide variety of scholarship funds which provide financial assistance for higher education, enrichment activities, and vocational training for many who might not otherwise benefit from such opportunities.



THE OKLAHOMA CITY COMMUNITY FOUNDATION IS A VEHICLE THROUGH WHICH PEOPLE WHO WANT TO CONTRIBUTE TO CHARITY CAN DO SO EASILY.

Not only are the maximum charitable tax benefits available for any type of gift, but many other services to donors are available to reduce the legal and financial barriers to certain charitable contributions:

- **ESCROW FUNDS** — These temporary funds allow donors to make a charitable contribution in one year and the Community Foundation can distribute it later to some charitable purpose. An escrow fund can simplify year-end giving and allow donors to take advantage of particular tax benefits in one year.
- **LIFE INCOME TRUST** — This is a pooled-income fund that offers the benefits of a deferred gift trust to donors and charities alike. A donor makes a gift to the Life Income Trust but continues to receive the income from the gift during his lifetime. At his death, the gift creates a **NAME FUND** and supports a charitable purpose specified by the donor.
- **AFFILIATED FUNDS** — This vehicle provides customized management of private foundation assets and large, non-profit endowment funds.

GIFTS TO THE COMMUNITY FOUNDATION CAN BE MADE IN A VARIETY OF WAYS:

Cash or marketable securities

Life insurance policies

Oil and gas royalty interests

Securities in closely held firms

Certain types of real estate or personal property

Gifts can be current or deferred. Bequests, charitable-remainder trusts, and gifts to the Life Income Trusts all provide the donor with current income and create a charitable fund in his name at a later time.

ANYONE WHO CONTRIBUTES TO CHARITY SHOULD CONSIDER MAKING THOSE CONTRIBUTIONS IN A WAY THAT HAS A LASTING BENEFIT TO THE CHARITABLE ORGANIZATION OR INTEREST.

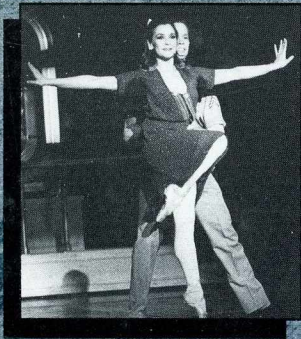
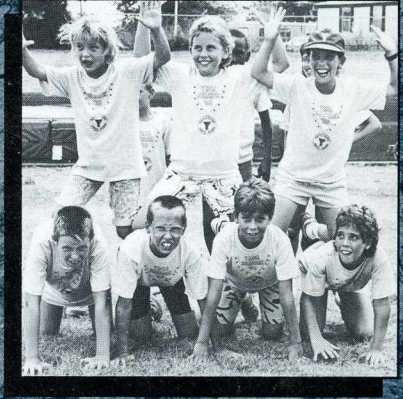
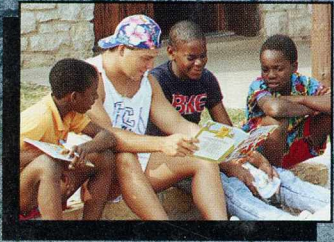
By establishing a permanent fund at the Oklahoma City Community Foundation, you can insure that your charitable interests will always be supported.

You are invited to contact the Oklahoma City Community Foundation to talk about your charitable interests and how the Community Foundation can help.



*Oklahoma City
Community Foundation*

**115 Park Avenue P.O. Box 1146
Oklahoma City, Oklahoma 73101
(405) 235-5603**



**OKLAHOMA CITY
COMMUNITY FOUNDATION, INC.**
POST OFFICE BOX 1146
OKLAHOMA CITY, OKLAHOMA 73101-1146



**NON-PROFIT ORG.
U.S. POSTAGE
PAID
OKLA. CITY, OKLA.
PERMIT NO. 255**